



August 2019 Product Catalogue your safety is our business



Version 2

020 8863 8333 • www.c-ko.co.uk • sales@c-ko.co.uk

1 About Us

About Us

CKO has been involved in the design, development and distribution of products and project solutions for over 30 years. Working directly with established manufacturers in the far east, UK and Europe to meet the safety and leisure requirements of our customers in the commercial vehicle and automotive industries.

We offer an extensive range of products from stock and competitive & viable lead times to meet our customer's special requirements.

Commercial Vehicles and compliance

Our wide range of products will help you meet all your compliance needs and we can offer you tailored support to understand what you and your customers need. Enabling you to achieve Bronze, Silver and Gold FORS standards, ensuring your vehicles are compliant. CKO is here to take the trouble out of meeting those standards.

With over 30 years' experience, our staff are here to guide you through the maze of requirements and assist you in meeting the standards you need in order to operate your fleet within the modern commercial vehicle world.

Our extensive range provides solutions for rear, front and side vision, safe reversing and manoeuvring, digital video recording on SD card, hard drive or through live-view ensuring incidents can be managed swiftly, claims supported or rebuffed and driver behaviour monitored.

Benefits of CKO compliance systems

- Access to new contracts – a comprehensive vehicle safety system will meet all your requirements for FORS and WRRR; Crossrail, TfL, HS2 and other publicly funded projects
- Access to London – the Mayor of London's Safer Lorry Scheme applies to all HGV's entering or operating within London
- Reduces down-time following incidents and collisions
- Reduces money spent on insurance claims, premiums and 'false-claims'
- Reduces money spent on collision repairs
- Reduces reputational risk
- Demonstrates company's social responsibility programme
- Potential to reduce theft (vehicle and load)

Passenger Vehicles

For Saloon Cars, Caravans, Taxis and Motor Homes we have products for safe manoeuvring, recordable devices, dash-cams, entertainment, digital radio and heated seats to keep you cosy and warm.

Technical know-how and warranty returns

Buying from CKO brings you the extra reassurance of our in-house technical team. We evaluate and test all our products before they go to market and undertake repairs on warranty items directly in our technical department.

This together with our technical help line allows us to provide a full back up service to our customers who can have the confidence in our long-term support and warranty responsibilities.

The aim of our business is to offer quality products, value for money and great service as we recognise that customer satisfaction is at the core of our business.

Warranty Terms and Conditions

CKO warrants all goods to be free from defect in material and workmanship in normal use provided that they have been installed and operated in accordance with the instructions supplied. The start date of all warranties is the date of delivery to the purchaser unless otherwise agreed in writing by CKO. The period during which the Two Year Warranty applies is stated above. CKO make no other warranty, express or implied, with respect to the goods, their marketability, quality or fitness for any particular use or purpose. In particular, but without prejudice to the general provisions of the conditions of sale, no responsibility is assumed for incidental or consequential loss by reason of any warranty express or implied. Full details of CKO's Terms and Conditions are contained on our website www.c-ko.co.uk. CKO International Limited reserves the right to change terms, conditions and specifications shown in this catalogue at any time. All Information within this catalogue was correct at time of going to print.

1	Introduction to Compliance				4-5	
2	Digital Video Recording	Live View 4, 6, 8 Channel DVRs DVR Comparison Chart DVR Accessories			6-7 8 9 10-11	
3	Dash Cameras				12-17	
4	Cameras	AHD Cameras Vehicle Specific Cameras D1 Cameras			18-22 23-27 28-34	
5	Monitors & Camera Kits	Digital Wireless Camera Kits Monitors Mirror Monitors			35 36-37 38-42 43-48	
6	Proximity & Parking Sensors	Side Proximity Sensors LCV Sensors Passenger Car Sensors			49 50 51-52	
7	Warning Alarms & Lighting	Warning Alarms Light Bars Flashers	53-55 57 59	Beacons Work Lights Interior Lights Day Running Lights	56 58 60 61	
8	Heated Seats				62	
9	Multimedia & Entertainment	Roof Mounted Source Units	63 65	Rear Seat Rosen Headphones	64 66 67	
10	Cables & Accessories	USB Chargers Control Units Cables & Adaptors DVR-Dash Cam Accessories	68 70 72-75 79-80	CAN Bus Interfaces Brackets & Mounts Tractor & Trailer Cables Switch, Relay & Video Leads	69 71 76-78 81-84	
11	Power Inverters				85	
12	Consumables				86-95	
13	Tools				96-97	
14	Cash Boxes				98	

1 Compliance

The level of public scrutiny that has come to focus on the commercial vehicle sector in the last five years has resulted in a fundamental shift. It is now a commercial necessity for fleet operators to invest in safety equipment that will enable them to continue to gain access to construction sites and win contracts on infrastructure projects such as Crossrail and HS2.

Soon, it will be impossible to operate without being able to demonstrate compliance with established standards. CKO is here to take the trouble out of meeting those standards. With over 30 years' experience, our staff are here to guide you through the maze of compliance requirements and assist you in meeting the standards you need in order to operate your fleet within the modern commercial vehicle world.

Additional Benefits

We all have families outside of our work-lives so we all want our roads to be safe places. Commercial vehicle operators may have been unfairly targeted by the media but they also have a responsibility to other vulnerable road users going about their daily lives. Not only is the safety of vulnerable road users a personal issue, it also makes commercial sense.

- Access to new contracts – a comprehensive vehicle safety system will meet all your requirements for FORS and WRRR; Crossrail, TfL, HS2 and other publicly funded projects
- Access to London – the Mayor of London's Safer Lorry Scheme applies to all HGV's entering or operating within London
- Reduces down-time following incidents and collisions
- Reduces money spent on insurance claims, premiums and 'false-claims'
- Reduces money spent on collision repairs
- Reduces reputational risk
- Demonstrates company's social responsibility programme
- Potential to reduce theft (vehicle and load)

The Fleet Operator Recognition Scheme (FORS) is a voluntary accreditation scheme that promotes best practice for commercial vehicle operators. Using a progressive three-tiered scheme (Bronze, Silver, Gold) it recognises safer, greener and more efficient fleet operations. CKO can assist you in meeting all your FORS safety requirements. FORS encompasses all aspects of safety, efficiency, and environmental protection by enabling fleet operators to measure, monitor and improve performance. FORS provides accreditation pathways for operators of any type, and for those organisations that award contracts and specify transport requirements.

FORS Bronze, Silver and Gold membership provides progressive accreditation enabling operators to achieve exemplary levels of best practice. FORS members stand out from the crowd, work to standards above the legal minimum and have access to a wide range of exclusive benefits that provide a real competitive advantage.

FORS is relevant to commercial operators in three classes: Trucks (V5) Vans (V2) and Passenger carrying vehicles (PCV – V6). Some specific measures apply to particular classes.

Trucks – commercial vehicles over 3.5 tonnes gross vehicle weight

Vans – commercial vehicles of 3.5 tonnes gross vehicle weight or under

PCV's Any vehicle with 8 or more passenger carrying seats

C-KO Packages

We have divided our compliance packages into three simple to understand classes.

Rather than basing them in any one of the schemes, we will be able to advise you on the package that suits you best. The variations also depend on the type and class of vehicle you want to fit HGV, Van, PCV, 3.5 T or above, rigid, articulated etc)

Elementary/ Basic – the minimum requirements to meet the vehicle safety measures

Advanced – gives much more control to the driver in reducing road user risk

Comprehensive – gives much more control to the transport manager and ensures evidence is recorded both live and for later inspection

Basic

Left Turn Alarm
Reversing Alarm
7" Monitor
Reversing Camera
Left Side Camera

Advanced

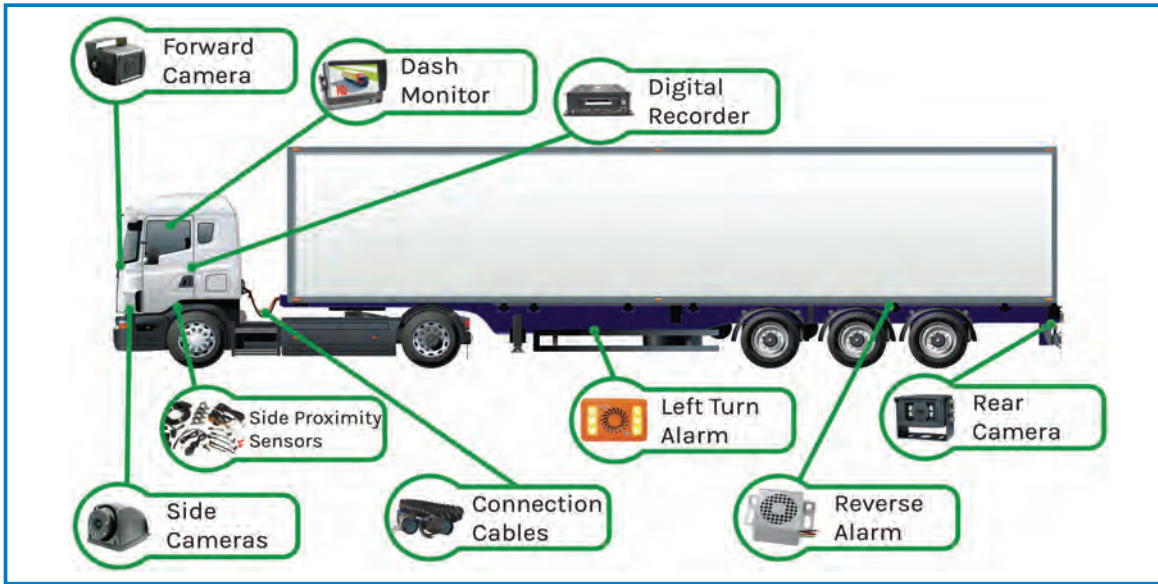
Left Turn Alarm
Reversing Alarm
7" Monitor
Reversing Camera
Left Side Camera
Side Proximity Sensors

Comprehensive

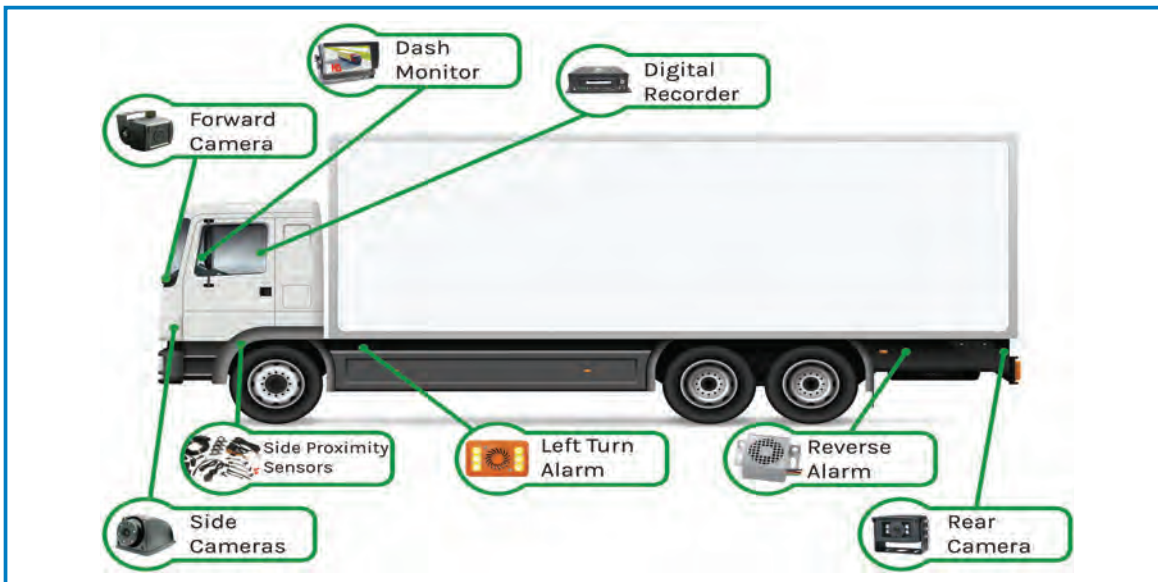
Left Turn Alarm
Reversing Alarm
7" Monitor
Reversing Camera
Left Side Camera
Side Proximity Sensors
Digital Recording
Front Camera
Right Side Camera
Live View Integration



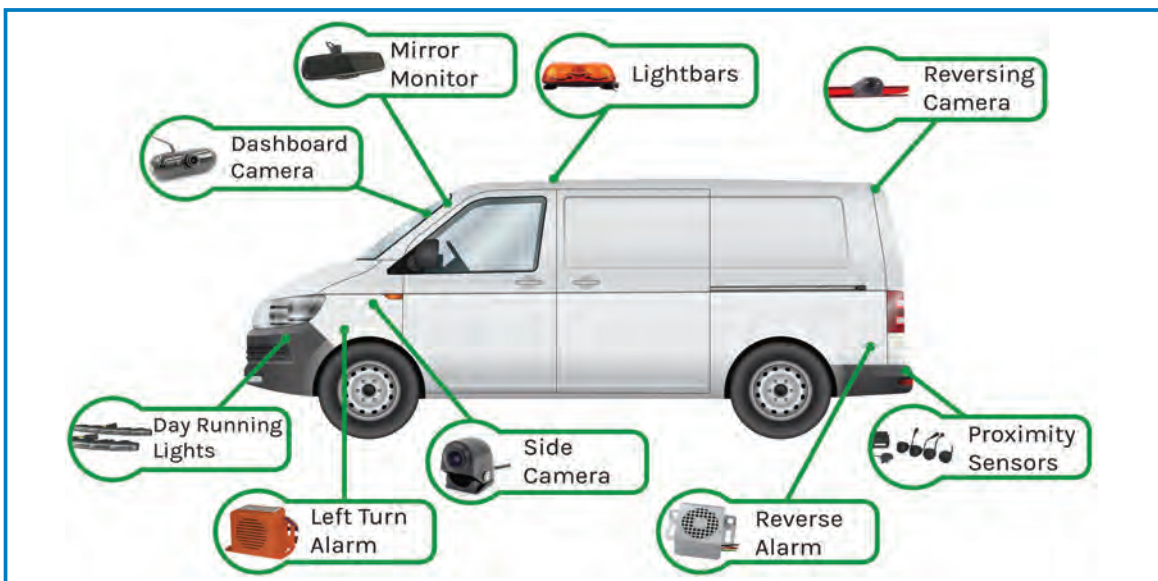
Artic



Rigid



Van



2 Live View

CKO Live View

The CKO Live view system offers secure multi-network real-time video-stream and GPS tracking for your single or multiple vehicle fleet. With our system any user can view up to 16 separate streams, at any one time, with two users you can double that to 32.

Using the registration number as the default code and the depot to allocate the group it is simple to classify a fleet of vehicles and enable different users' permissions to access sets of information.

Introduction

Live View is a 4G based service offered by CKO enabling customers to view individual vehicles and whole fleets with real-time and historical footage. We offer monthly and annual payment terms on a 12-month contract for which we provide:

- PC software
- iOS and android phone software
- Device SIM
- Data server
- Customised email alerts & notifications
- Telephone and remote access support
- UK and EU roaming networks

Functionality

Our system offers market-leading functionality:

- Vehicle tracking by GPS – current location and speed of the vehicle can be seen
- Alerts regarding faults such as geo-fencing breaches, failing hardware, switch to SD card recording, video loss on channel e.g faulty camera
- Remote download footage can be viewed through mobile phone or PC
- Historical footage – downloadable footage for the last month
- Change settings remotely – settings such as camera resolution, date, time and recording settings can be changed remotely. Software updates can also be sent remotely.
- Multiple vehicle viewing – the interface can show 32 live and recorded streams at one time, meaning that many fleets can be managed on a single interface.
- SOS button – The introduction of our SOS button on the DVR means if an incident occurs the driver can push it and central office will be immediately notified and able to investigate the issue. As well as time and date, a video clip of between 1 to 2 minutes can be saved on the server from when the alarm is pushed on the device.
- Geofencing – multiple fences can be applied and notifications will alert the user when a vehicle enters or leaves those zones. Not only does this provide an anti-theft security feature, businesses can also use geofencing to monitor employees in the field, automate time cards and keep track of individual vehicles over particular time periods.

Without Live-view, if your vehicle was involved in an incident, you would only hear about what's happened once your driver gets back and reported it. With our live-view system you will receive notifications, tailored to your own specification. In the case of an incident, an alarm will be displayed on the live-view page or direct to your mobile phone. It does not interrupt the user view, but like an exception report, it can prompt action by alerting users that action is required.

Historic Tracking

The Real-time vehicle locator can be expanded to show single or multiple vehicle locations. If a vehicle is offline, the last location where it was connected will be displayed.

The 'Track' tab provides the historic location, speed and DVR status. Usefully, it can map historic route showing where the vehicle travelled in 30 second intervals. It is possible to search this function by time and date. The information is stored on our dedicated secure server meaning that vehicles that are not online can also be checked. In terms of vehicle safety and security this is an added bonus of the Live View system and when added to the 'status' of the DVR, can help highlight issues of suspected device tampering or fuel theft.

Remote Download & Historic Viewing

Our standard tariff comes with a fair-use cap, but additional data can be purchased in bundles. Historic recordings can be remotely downloaded or streamed online by pinpointing the desired time and date. This allows the user to act quickly in response to incident reports. The file is saved in several ways, on the local device and on our server. Single or multiple channels can be downloaded and saved in a secure format, only playable on our local PC software where it can be converted to AVI if required.

Photos can also be viewed using the Record tab, the photos are snapshots that can be linked to the alarms and other custom settings from the server side. The photos are saved to our dedicated secure server.

Alarm inputs can be linked to different events, e.g the rear door opening for a delivery. This type of setting does require additional wiring and setting configuration, but greatly enhances the functions available and can be tailored for the specific needs of the business.

Email Notification

We recommend that email alerts are sent to a dedicated person in your company. In the event of equipment failure this provides you with a fail-safe beyond the driver's daily walk-around check. Under FORS Standard V5, daily checks of electronic safety is now compulsory. In the event of DVR video loss or hard drive failure an email alert can be sent to those who need to know within your organisation.

After understanding your needs, and with your permission, email alerts can be set up to multiple email addresses per vehicle or per group of vehicles. Custom input alarms can also be set to report by email at certain times or when an SOS button is press. As part of the initial set up, we can talk through your business needs and customise the settings to get the most out of our Live View system.

Phone App

The phone app provides the most basic information compared to the feature-packed desktop version. However, for quick and easy reference, the phone app allows users to check if vehicles are online, view the cameras in real time and see their current or last location.

Changing DVR Settings

Our Live View desktop application allows DVR configuration settings to be changed. Settings, like alarm triggers, camera types and many others can be altered without having to be with the vehicle. Current setting can also be displayed. Making changes to settings after installation may be advantageous to tweak the systems usability or when new features become available. The DVR must be connected to Live View to access this function. User access control levels can be set so that settings can only be altered by those with the necessary permissions, securing alterations and ensuring consistency across the fleet.

Our Offer

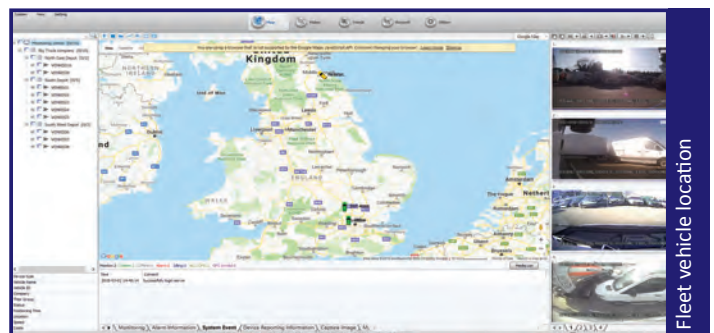
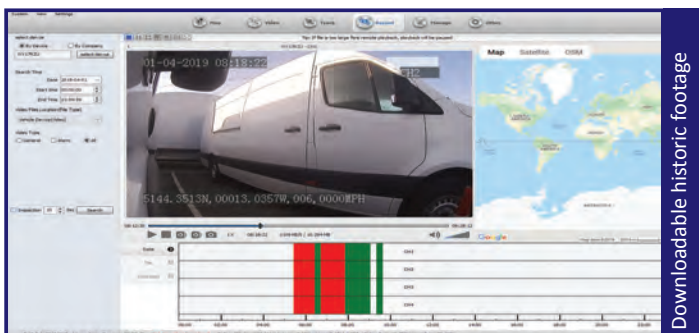
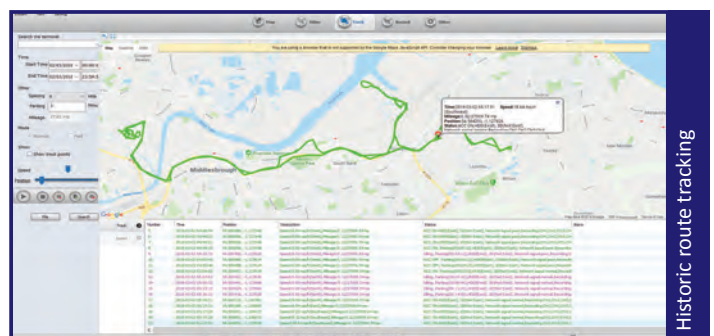
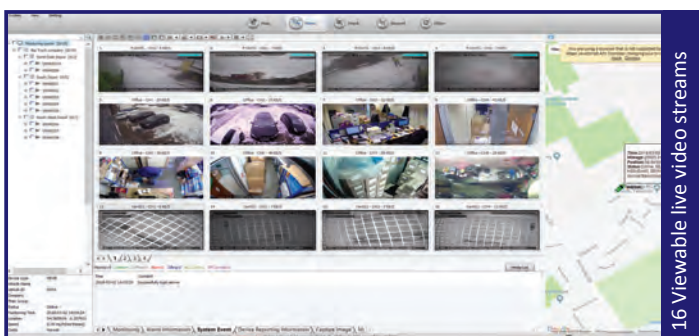
On a yearly subscription basis, we offer:

PC Software, iOS and Android Software, Device Sim, Data Server, Customisation of email alerts, Telephone and Remote Support, Options for roaming, UK only single network or UK & Europe multi-roaming network.

Dependent on your business needs we will recommend the appropriate service level for you.

To begin the registration process, we simply need the vehicle registration details and you will receive the DVR preconfigured with the server information. Our standard practice is to activate the service once the device is installed and we have notification from the installer (or receipt of your confirmation).

Please note that CKO does not monitor the vehicles or the alarm linkages, this is down to the you as the company.



2 Digital Video Recording

Benefits

Safety

- Monitoring of driving ability and standards
- Improved driver manoeuvring visibility
- Safe loading and unloading practices
- Driver concentration and fitness to drive

Protection

- Load security and damage prevention
- Crash-for-cash, inflated and fraudulent claims
- Unjustified personal injury claims
- Deliberate and accidental vehicle and property damage

Compliance

- FORS, CLOCS, Crossrail
- Site access
- Health and Safety executive guidelines
- Company policies and procedures



Features

- Record up to 8 channels video and audio, plus 1 IPC
- Built in GPS for vehicle location, speed and time which is also watermarked including vehicle registration on video footage
- Built in 3-axis G sensor to detect vehicle impact, harsh braking and rapid acceleration
- Customisable alarm inputs to record events and automatically view selected cameras on screen, for example to display side camera when indicating
- Alarm outputs to trigger other devices
- Intelligent voltage protection to turn the DVR off at specified parameters
- Options for time sync with GPS and automatic Daylight-Saving time switch
- 3 power modes - Ignition switches on and off with the vehicle's ignition, timed turns on and off at set times and Standby keeping the DVR on and switches the cameras off.
- 3 recording modes - Power records when the time is on, Timed records at specified times and Alarm only records alarm files
- Records in AHD 1080p & AHD 720p or D1 camera format, with options to have a mixed format
- SD card back up function
- Snap shot image alarm function
- Import and export config files by USB for fleet continuity
- Cameras can be mirrored and flipped on the DVR

Search by specific time & date

Google map shows vehicle location and direction

Playback speed

G-Shock graph display

Picture snapshot

Report generator

1 / 4 / 9 Video playback watermarked with time, date, vehicle registration, channel number, GPS location and speed

Left & right indicator, foot brake and reverse inputs recorded and displayed

PC Software

Export all video channels or select those that are most relevant

Set specific time range of an incident to export only that section

Select audio source for the video file

Choose the location where to save the video file

AVI Converter & Exporter



DVR Comparison

	AHD-100	AHD-401	AHD-601	AHD-801
Recording				
Max Resolution	720p (1280 x 720)	1080p (1920 x 1080)	1080p (1920 x 1080)	1080p (1920 x 1080)
Channels	4	4	6	8
Audio	√	√	√	√
Video Compression	H.264 Encrypted AVI	H.264 Encrypted AVI	H.264 Encrypted AVI	H.264 Encrypted AVI
AHD Compatible	√	√	√	√
IPC Compatible	X	1 Channel	1 Channel	1 Channel
AV in / out				
Video input	4 x 4 Pin aviation	4 x 4 Pin aviation	6 x 4 Pin aviation	8 x 4 Pin aviation
Video output	4 Pin aviation, VGA	4 Pin aviation, VGA	4 Pin aviation, VGA	4 Pin aviation, VGA
Audio input	4 x 4 Pin aviation	4 x 4 Pin aviation	6 x 4 Pin aviation	8 x 4 Pin aviation
Audio output	4 x 4 Pin aviation	4 x 4 Pin aviation	6 x 4 Pin aviation	8 x 4 Pin aviation
OSD	1 / 2 / 4	1 / 2 / 4	1 / 2 / 4 / 6 / 9	1 / 2 / 4 / 6 / 9
Network streaming				
Ethernet Port	√	√	√	√
Wi-Fi	Optional	Optional	Optional	Optional
4G Compatible	Optional	Optional	Optional	Optional
Mobile App	Android / iOS	Android / iOS	Android / iOS	Android / iOS
Storage / Backup				
HDD / SSD	X	2.5" SATA II (2TB max)	2.5" SATA II (2TB max)	2.5" SATA II (2TB max)
SD Card	2 x SDxC (128GB max)	1 x SDxC (128GB max)	1 x SDxC (128GB max)	1 x SDxC (128GB max)
Backup	USB 2.0 / Network	USB 2.0 / Network	USB 2.0 / Network	USB 2.0 / Network
Peripheral				
Lockable	√	√	√	√
GPS	√	√	√	√
G-Sensor	√	√	√	√
Timer off Delay	Up to 24 hours	Up to 24 hours	Up to 24 hours	Up to 24 hours
HDD / SD Failure Warning	√	√	√	√
Motion Detection	X	X	X	X
Camera Full Screen Trigger	√	√	√	√
Split Screen Camera Trigger	X	√	√	√
Remote Control	√	√	√	√
USB Port	USB 2.0	USB 2.0	USB 2.0	USB 2.0
Other				
Power output	12v	12v	12v	12v
Power input	8 - 36v (DC)	8 - 36v (DC)	8 - 36v (DC)	8 - 36v (DC)

2 DVR Accessories



CT-TRAY

Spare DVR Caddy

Supplied without media installed

Please note that the DVR needs to format new media to allow recording to begin

USB 2.0 Type B connection on rear



SD Card

See Price List for P/N

Available in various memory capacity

Can be used with our DVRs to record footage

We recommend 64GB, on factory settings the DVR will use 650MB per channel per hour as recording quality is reduced
Function must be enabled on DVR to switch to SD card recording in the unlikely event of hard drive failure



2.5" Hard Disc Drive

See Price List for P/N

On factory settings a DVR will use 1.2GB per hour per channel at 720p

2-year manufacturer warranty

Available in 1TB or 2TB capacity

7mm - SATA III-6Gb/s

5400rpm - 128MB Cache



2.5" Solid State Drive

See Price List for P/N

On factory settings a DVR will use 1.2GB per hour per channel at 720p

Solid state drives - recommended for DVRs

5-year manufacturer warranty

Available in 250MB, 500MB, 1TB & 2TB capacity

7mm - SATA III-6Gb/s



CT-REMOTE

Spare Remote Control for DVR

Supplied with battery

Additional batteries also available



CT-USB-LEAD

Connection from CT-Tray to PC

USB 2.0 Type A to Type B



DVR-A1-ANT

External Multipurpose Antenna

4G, 3G, Wi-Fi and GPS
3M adhesive and fastened by three self-tapping screws
120mm diameter
3metre lead
SMA Male connection



DVR-3G/4G-ANT

External 3G / 4G Antenna

SMA Male connection



CT-SOS

SOS Button and IR / LED Status Light Extension

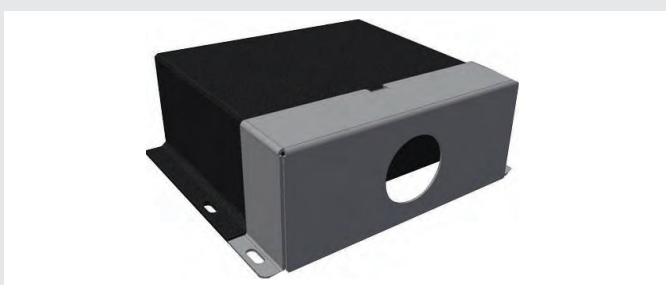
Push to make switch
When pressed alerts operator of an event



CT-SWITCH

Illuminated Incident Switch

Push to make switch
When pressed alerts operator of an event
Dimly illuminated to show DVR has power
Includes label
22mm hole diameter
12 Volt



CT-CASE

Cable Tampering Preventer

Prevents drivers removing cables from the rear of the DVR



CT-MIC

Discrete Microphone for Audio Recording

Requires 12 Volt

3 Dash Cameras



DC-DVR-E7-F

Front Facing Dash Camera

- 1 Camera
- 145° FOV
- External GPS
- G-Shock & Speed
- 1080p
- Wi-Fi download & setting control
- 128GB Max.
- Galaxy Core GC2023
- SD Card concealed in mount
- Tamperproof Cable
- 30 FPS
- 3MP
- Built in Microphone
- Additional Camera input
- 16GB TF Card Included
- Park Mode
- Ignition Timer Relay
- Built in Battery Protector

11m Extension Cable for Second Camera
Tamperproof label included

DC-DVR-E-RCAM

External Rear Camera for E7 & E200



DC-DVR-E-REAR

Internal Rear Camera for E7 & E200



DC-DVR-E-IR

Internal IR Camera for E7 & E200





DC-DVR-E200-F

Dash Camera with External ECU

- 1 Camera
 - 130° FOV
 - External GPS
 - G-Shock & Speed
 - 1080p
 - Wi-Fi download & setting control
 - 128GB Max.
 - Sony IMX323
 - Tamperproof Cable
 - 30 FPS
 - 3MP
 - Optional External Microphone
 - Additional Camera input
 - 16GB TF Card Included
 - Park Mode
 - Ignition Timer Relay
 - Built in Battery Protector
- 11m Extension Cable for Second Camera

DC-DVR-E-RCAM

External Rear Camera for E7 & E200



DC-DVR-E-REAR

Internal Rear Camera for E7 & E200



DC-DVR-E-IR

Internal IR Camera for E7 & E200



3 Dash Cameras



C-KO-ELITE-PLUS-DL2
Front & Driver Facing Camera
 2 Cameras
 125° FOV / 149° FOV Internal
 Internal GPS
 G-Shock & Speed
 1080p
 Tamperproof Lockable Case
 128GB Max.
 OV4689 CMOS
 Lockable SD Card
 Wi-Fi
 30FPS
 4MP
 Built in Microphone



C-KO-ELITE-TOPAZ-PLUS
Front Facing Camera
 1 Camera
 125° FOV
 Internal GPS
 G-Shock & Speed
 1080p
 Wi-Fi
 128GB Max.
 OV4689 CMOS
 Lockable SD Card
 Tamperproof Lockable Case
 30FPS
 4MP
 Built in Microphone
 Additional Camera input



C-KO-ELITE-IR
IR Module for Elite Dash Cameras
 Included in Box



C-KO-ELITE-INT-IR
Internal IR Camera



C-KO-ELITE-INT-NONIR
Internal Non-IR Camera



C-KO-ELITE-VCAB
Video Output Cable



ROADHAWK-DC3-DASHCAM

Front Facing Dash Camera

- 1 Camera
- 120° FOV
- Internal GPS
- G-Shock & Speed
- 1080p
- 128GB Max.
- OmniVision OV4689
- Optional Lockable Casing
- Optional Tamperproof Cable
- 30 FPS
- 4MP
- Built in Microphone
- Optional Event Button
- 8GB TF Card Included

ROADHAWK-LOCK Tamperproof Case



ROADHAWK-HARDWARE Hardwire Kit



MIO-C330

Front Facing Dash Camera

- 1 Camera
- 130° FOV
- Internal GPS
- G-Shock & Speed
- 1080p
- Safety Camera Warnings
- 128GB Max.
- AIT8328D
- 30 FPS
- 2MP
- Built in Microphone
- 2 Inch Display
- Park Mode



MIO-C380DUAL

Front & Rear Facing Dash Camera

- 2 Cameras
- 130° FOV
- Internal GPS
- G-Shock & Speed
- 1080p
- Safety Camera Warnings
- 128GB Max.
- SONY CMOS
- 30 FPS
- 2MP
- Built in Microphone
- 2 Inch Display
- Park Mode

3 Dash Cameras



DC-DVRF70

Front Facing Dash Camera

- 1 Camera
- 140° FOV
- Optional External GPS
- G-Shock, Speed if GPS option connected
- 1080p
- 64GB Max.
- CMOS
- Optional tamperproof cable
- 30 FPS
- 2.1MP
- Built in Microphone
- 8GB Included
- Park mode

DC-DVRF70-LOCK

Tamperproof Case for F70



DC-DVR770-2CG

2 Camera Model

DC-DVR770

Front Facing Dash Camera

- 1 Camera
- 140° FOV
- Internal GPS
- G-Shock & Speed
- 1080p
- Advanced Safety Camera, Speed & Traffic Light Warnings
- Wi-Fi
- 64GB Max.
- SONY EXMOR
- Optional tamperproof cable
- 30FPS
- 2.19M
- Built in Microphone
- 16GB Included
- Park mode

DC-TW-GPS

GPS Antenna



DC-TW-HW

Hardwire Cable



DC-DVR-VT200

3G Dash Camera

- 1 Camera
- 170° FOV
- Internal GPS
- G-Shock & Speed
- 1080p
- 64GB Max
- CMOS SENSOR
- Lockable
- Tamperproof Cable
- 30FPS
- 3MP
- Built in Microphone
- 32GB Included
- Park Mode



BLACKVUE-DR900-2CH

Forward 4k Camera and Rear Facing Camera

2 Camera
 162° FOV / 139° FOV
 Internal GPS
 G-Shock & Speed
 4K / 1080p
 Wi-Fi download & setting control
 128GB Max.
 SONY STARVIS
 30 FPS
 8MP / 2.1MP
 Built in Microphone
 Park Mode
 Single Camera Version available



BLACKVUE-DR750-2CH-TRUCK

Dash Camera with External Rear Camera

2 Camera
 139° FOV / 120° FOV
 Internal GPS
 G-Shock & Speed
 1080p
 Wi-Fi download & setting control
 128GB Max.
 SONY STARVIS
 Optional Tamperproof Casing
 60 FPS / 30 FPS
 2.1MP
 Built in Microphone
 Park Mode with Power Magic
 Single Camera Version available
 Cameras Available with 16GB, 32GB, 64GB & 128GB

BLACKVUE-DR750-TAMP

Tamperproof Case for DR750



BLACKVUE-POWERMAGIC-PRO



BLACKVUE-BV124



BLACKVUE-CARD-MSD



4 AHD Cameras - 1080p



AHD-RCAM-1080-P

1080p Heavy Duty Rear Camera

4 Pin aviation connection
TV system: AHD
Output resolution: 1080p
FPS: 25
Viewing angle: 89°(H) 72°(V) 103°(D)
Image device: 1/3" CMOS
Focal length: f: 2.8mm
Operating voltage: 12V DC
Dimensions: 80mm(W) 63mm(D) 70mm(H)
Mirror image



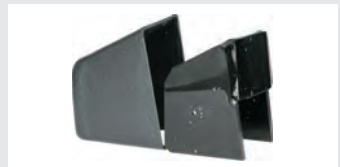
AHD-FCAM-1080P

Front Facing Camera

4 Pin aviation connection
Mini BMW connector to 4 Pin aviation for easier application
TV system: AHD
Output resolution: 1080p
FPS: 25
Viewing angle: 130°(H) 70°(V)
Image device: 1/4" CMOS
Focal length: f: 2.3mm
Operating voltage: 12V DC
Dimensions:
39mm(W) 35mm(D)
30mm(H)

CA-COVER

Camera Cover for
AHD-FCAM-1080P



AHD-SCAM-725-1080P

Night Vision Side Camera

4 Pin aviation connection
TV system: AHD
Output resolution: 1080p
FPS: 25
Viewing angle: 140°(H) 80°(V)
Image device: 1/4" CMOS
Focal length: f: 2.8mm
Operating voltage: 12V DC
Dimensions: 60mm(W)
75mm(D) 50mm(H)
Mirror image selectable
Guide lines selectable
Built in Microphone



AHD-BR-RVC07

AHD Wing Mirror Side View Camera

Night vision
 4 Pin aviation connection
 Can be mounted to the wing mirror
 TV system: AHD
 Output resolution: 720p
 FPS: 25
 Viewing angle: 89°(H) 50°(V)
 Image device: 1/3" CMOS
 Focal length: f: 1.2mm
 Operating voltage: 12V DC
 Dimensions: 80mm(W) 49mm(D) 63mm(H)



AHD-SCAM-720-AUD-2

Night Vision Side Camera

4 Pin aviation connection
 TV system: AHD
 Output resolution: 720p
 FPS: 25
 Viewing angle: 100°(H) 70°(V)
 Image device: 1/3" CMOS
 Focal length: f: 2.8mm
 Operating voltage: 12V DC
 Dimensions: 50mm(W)
 68mm(D) 43mm(H)
 Mirror image selectable
 Guide lines selectable
 Built in Microphone

SCAM-SPACER

Allows Cameras to be Mounted Further Out
 Product may need to be adapted for use with all cameras
 25mm deep



AHD-SCAM-725

Night Vision Side Camera

4 Pin aviation connection
 TV system: AHD
 Output resolution: 720p
 FPS: 25
 Viewing angle: 130°(H) 70°(V)
 Image device: 1/3" CMOS
 Focal length: f: 2.8mm
 Operating voltage: 12V DC
 Dimensions: 60mm(W)
 75mm(D) 50mm(H)
 Mirror image selectable
 Guide lines selectable
 Built in Microphone
AHD-SCAM-725-WHITE
Version in white

SCAM-SPACER



White Version



4 AHD Cameras



AHD-CT200-F

Window Mounted Front Facing Camera

4 Pin aviation connection
Mini BMW connector to 4 Pin aviation for easier application
TV system: AHD
Output resolution: 720p
FPS: 25
Viewing angle: 110°(H) 60°(V)
Image device: 1/3" CMOS OV60
Focal length: f: 2.3mm
Operating voltage: 12V DC
Dimensions: 60mm(W) 35mm(D) 30mm(H)



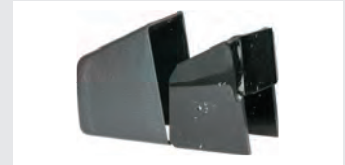
AHD-FCAM-120-CL / AHD-FCAM-140-CL

Front Facing Camera

4 Pin aviation connection
Mini BMW connector to 4 Pin aviation for easier application
TV system: AHD
Output resolution: 720p
FPS: 25
AHD-FCAM-120-CL Viewing angle: 120°(H) 60°(V)
AHD-FCAM-140-CL Viewing angle: 140°(H) 60°(V)
Image device: 1/3" CMOS OV60
Focal length: f: 2.3mm
Operating voltage: 12V DC
Dimensions: 39mm(W)
35mm(D) 30mm(H)
Mirror image selectable via cutting green wire

CA-COVER

Camera Cover for AHD-FCAM



AHD-DOME-600TVL

AHD Dome Camera with Audio

Dome Camera
Night Vision
4 pin aviation connection
Built in Microphone for Audio
TV system: AHD
Output resolution: 720p
FPS: 25
Viewing angle: 74°(H) 58°(V) 88°(D)
Image device: 1/3" CMOS
Operating voltage: 12V DC
Dimensions: 86mm ϕ 58mm(H)



AHD-DCAM-650

AHD Dome Camera with Audio

Night vision
 4 Pin aviation connection
 Plastic dome cover
 Anti-tamper design
 Built in Microphone for Audio
 TV system: AHD
 Output Resolution: 720p
 FPS: 25
 Viewing angle: 90°(H) 40°(V)
 Image device: 1/3" CMOS
 Focal length: f: 2.8mm
 Operating voltage: 12V DC
 Dimensions: 77mmØ 60mm(H)

DCAM-ANGLE
 Surface Mount Adaptors for
 Dome Cameras
 0°, 15° & 25° available



AHD-RCAM-210-AUD

Heavy Duty Rear Camera with Smart IR

4 Pin aviation connection
 TV system: AHD
 Output resolution: 720p
 FPS: 25
 Viewing angle: 89°(H) 72°(V) 103°(D)
 Image device: 1/3" CMOS
 Focal length: f: 2.8mm
 Operating voltage: 12V DC
 Dimensions: 80mm(W) 63mm(D) 70mm(H)
 Mirror image
 Built in Microphone



AHD-RCAM-220

Wide Angle Heavy Duty Rear Camera

4 Pin aviation connection
 TV system: AHD
 Output resolution: 720p
 FPS: 25
 Viewing angle: 100°(H) 60°(V) 80°(D)
 Image device: 1/3" CMOS
 Focal length: f: 2.8mm
 Operating voltage: 12V DC
 Dimensions: 75mm(W)
 55mm(D) 75mm(H)
 Mirror image
AHD-RCAM-220-SS (Silver)
AHD-RCAM-220-B (Black)

AHD-RCAM-220-B
 Black Version



4 AHD Cameras



AHD-MB-SPR-PAL

Overhanging Camera

Night vision
4 Pin aviation connection
TV system: AHD
Output resolution: 720p
FPS: 25
Viewing angle: 110°(H) 100°(V)
Image device: 1/3" CMOS OV60
Focal length: f: 2.5mm
Operating voltage: 12V DC
Dimensions: 132mm(W) 220mm(D) 100mm(H)



AHD-SPR-CAM-PAL

Mercedes Sprinter/VW Crafter Brake Light Camera 2006+ (Mk2)

Night vision
4 Pin aviation connection
Built in Microphone for Audio
TV system: AHD
Output resolution: 720p
FPS: 25
Viewing angle: 110°(H) 100°(V)
Image device: 1/3" CMOS OV60
Operating voltage: 9-16V DC
Dimensions: 350mm(W) 100mm(D) 50mm(H)



C-KO-SPR-CAM

Mercedes Sprinter/VW Crafter Brake Light Camera

4 Pin aviation connection
Adjustable Ball Camera
Selectable guide lines via jumper plug
Built in microphone for audio
Replaces brake light
Fixed mirror image
TV system: NTSC / PAL

Output resolution: 480i (NTSC) / 576i (PAL)
FPS: 30 (NTSC) / 25 (PAL)
Effective pixels: 762 x 504
Viewing angle: 130°(H) 110°(V)
Image device: CMD-III
Operating voltage: 9-16V DC
Dimensions: 350mm(W) 90mm(D) 50mm(H)
C-KO-SPR-CAM (NTSC Version) C-KO-SPR-CAM-PAL (PAL Version) C-KO-SPR-CAM-NM (Non Mirror Version – available)



C-KO-SPRINTER-CCD-CAM

Mercedes Sprinter/VW Crafter Brake Light Camera

4 Pin aviation connection
Adjustable Ball Camera
Built in Microphone for Audio
Replaces brake light
Fixed mirror image
TV system: NTSC / PAL
Output resolution: 480i (NTSC) / 576i (PAL)

FPS: 30 (NTSC) / 25 (PAL)
Effective pixels: 752 x 582
Viewing angle: 120°(H) 103°(V) 133°(D)
Image device: 1/3" Sony CCD
Focal length: f: 1.7mm
Operating voltage: 12V DC
Dimensions: 341mm(W) 119.5mm(D) 50mm(H)
C-KO-SPRINTER-CCD-CAM-N (NTSC Version) C-KO-SPRINTER-CCD-CAM-P (PAL Version)



C-KO-VITO-CAM

Mercedes Vito Brake Light Camera

4 Pin aviation connection
Clips in and replaces OEM brake light
Built brake light LEDs
Fixed mirror image
TV system: NTSC
Output resolution: 480i

FPS: 30
Effective pixels: 510 x 492
Viewing angle: 110°(H) 80°(V)
Image device: 1/3" CMOS
Focal length: f: 2.8mm
Operating voltage: 12V DC
Dimensions: 491mm(W) 100mm(D) 55mm(H)

4 Vehicle Specific Cameras



LED Version

C-KO-TC-CAM-LED

Ford Transit Custom Brake Light Camera

Adjustable camera ball
Night vision
4 Pin aviation connection
Clips in and replaces OEM brake light
Fixed mirror image
TV system: PAL / NTSC
Output resolution: 576i (PAL) / 480i (NTSC)



Bulb Version

FPS: 25 (PAL) / 30 (NTSC)
Effective pixels: 500 x 582
Viewing angle: 82°(H) 79°(V) 99°(D)
Image device: 1/4" CMOS
Focal length: f: 2mm
Operating voltage: 12V DC
Dimensions: 264mm(W) 120mm(D) 68mm(H)
C-KO-TC-CAM (Bulb Version) C-KO-TC-CAM-LED (LED Version) C-KO-TC-CAM-NTSC-L (LED NTSC Version)



C-KO-TRANSIT-CAM

Ford Transit Brake Light Camera

4 Pin aviation connection
Adjustable ball camera
Replaces factory brake light
Fixed mirror image
TV system: PAL
Output resolution: 576i

FPS: 25
Effective pixels: 976 x 596
Viewing angle: 120°(H) 100°(V)
Image device: 1/3" NVP Sony CCD
Focal length: f: 2.6mm
Operating voltage: 9-16V DC
Dimensions: 385mm(W) 130mm(D) 55mm(H)



C-KO-TCON-CAM

Ford Transit Connect 2014-2017 Brake Light Camera

4 Pin aviation connection
Adjustable ball camera
Replaces factory brake light
Fixed mirror image
TV system: PAL
Output resolution: 576i

FPS: 25
Effective pixels: 720 x 540
Viewing angle: 120°(H) 90°(V)
Image device: 1/3" CMOS
Focal length: f: 2.8mm
Operating voltage: 12V DC
Dimensions: 400mm(W) 120mm(D) 55mm(H)



C-KO-CRAFTER-CAM

VW Crafter, Man TGE Brake Light Camera

4 Pin aviation connection
Adjustable Ball Camera
Replaces factory brake light
Fixed mirror image
TV system: NTSC
Output resolution: 480i

FPS: 30
Effective pixels: 752 x 582
Viewing angle: 120°(H) 103°(V) 133°(D)
Image device: 1/3" Sony CCD
Focal length: f: 1.7mm
Operating voltage: 12V DC
Dimensions: 64.2mm(W) 208.9mm(D) 68.7mm(H)
Camera only also available - additional charge for brake light



C-KO-VWT-CAM

VW T5/T6 with Double Door Brake Light Camera

4 Pin mini BMW to 4 Pin aviation connection
Clips in and replaces OEM brake light
Fixed mirror image
TV system: PAL
Output resolution: 576i
FPS: 25

Effective pixels: 500 x 582
Viewing angle: 110°(H) 80°(V)
Image device: 1/3" CMOS
Focal length: f: 2.8mm
Operating voltage: 12V DC
Dimensions: 188mm(W) 60mm(D) 60mm(H)



C-KO-VWC-CAM

VW Caddy Brake Light Camera

Clips in and replaces OEM brake light
Fixed mirror image
TV system: PAL
Output resolution: 576i
FPS: 25
Effective pixels: 720 x 540

Viewing angle: 110°(H) 90°(V)
Image device: 1/3" CMOS
Focal length: f: 2.8mm
Operating voltage: 12V DC
Dimensions: 175mm(W) 39mm(D) 65mm(H)

4 Vehicle Specific Cameras



C-KO-FPC-CAM

Fiat Ducato, Peugeot Boxer, Citroen Relay Brake Light Camera

4 Pin aviation connection
Adjustable ball camera with night vision
Selectable guide lines via jumper plug
Built in microphone for audio
Built in red LED brake light
Fixed mirror image
TV system: NTSC / PAL
Output resolution: 480i (NTSC) 568i (PAL)
FPS: 30 (NTSC) / 25 (PAL)
Effective pixels: 762 x 504
Viewing angle: 130°(H) 110°(V)
Image device: CMD-III
Operating voltage: 9-16V DC
Dimensions: 270mm(W) 80mm(D) 57mm(H)
C-KO-FPC-CAM (NTSC Version) C-KO-FPC-CAM-PAL (PAL Version)



C-KO-NRV-CAM

Renault Master, Nissan NV400, Vauxhall Movano Brake Light Camera

4 Pin aviation connection
Night vision
Fixed mirror image
TV system: PAL / NTSC
Output resolution: 576i (PAL) / 480i (NTSC)
FPS: 25 (PAL) / 30 (NTSC)
Effective pixels: 648 x 488
Viewing angle: 89°(H) 72°(V) 103°(D)
Image device: 1/3" CMOS7959
Focal length: f: 2.8mm
Operating voltage: 9-16V DC
Dimensions: 197mm(W) 109mm(D) 126mm(H)
C-KO-NRV-CAM (PAL Version)
C-KO-NRV-CAM-NTSC (NTSC Version)



C-KO-VR-CAM

Vauxhall Vivaro, Renault Traffic Brake Light Camera

Adjustable camera ball
Night vision
4 Pin aviation connection
Clips in and replaces OEM brake light
Built in brake light LEDs
Fixed mirror image
TV system: PAL / NTSC
Output resolution: 576i (PAL) / 480i (NTSC)
FPS: 25 (PAL) / 30 (NTSC)
Effective pixels: 500 x 582
Viewing angle: 82°(H) 79°(V) 99°(D)
Image device: 1/4" CMOS
Focal length: f: 2mm
Operating voltage: 12V DC
Dimensions: 232mm(W) 160mm(D) 80mm(H)
C-KO-VR-CAM (PAL Version) C-KO-VR-CAM-NTSC (NTSC Version)



C-KO-VV-CAM

Vauxhall Vivaro, Renault Traffic Brake Light Camera 2014+

Night vision
4 Pin aviation connection
Clips in and replaces OEM brake light
Built in brake light LEDs
Fixed mirror image
TV system: NTSC
Output resolution: 480i
FPS: 30
Effective pixels: 500 x 582
Viewing angle: 120°(H) 90°(V) 110°(D)
Image device: 1/4" CMOS
Focal length: f: 2mm
Operating voltage: 12V DC
Dimensions: 140mm(W) 85mm(D) 55mm(H)



C-KO-EXP-CAM

Peugeot Expert, Citroen Dispatch and Toyota ProAce 2016+

4 Pin aviation connection
 TV system: NTSC FPS: 30
 Output resolution: 480i
 Effective pixels: 510 x 492
 Viewing angle: 110°(H) 80°(V)
 Image device: 1/3" CMOS7959 Focal length: f: 2.8mm
 Operating voltage: 12V DC
 Dimensions: 260mm(W) 40mm(D) 33mm(H)



CA-9801

Most Audi & VW



CA-9801DY

Audi A4 2017



CA-9801-EY

Audi A5 2017, Q2 & Skoda Kodiaq



CA-9935

Number Plate Light Camera for Viano & Vito

RCA video connection
 Guide lines selectable via joining green wires
 Original bulb fits into housing, power lead with relay
 TV system: NTSC FPS: 30
 Output resolution: 480i
 Effective pixels: 668 x 576
 Viewing angle: 120°(H) 110°(V)
 Image device: 1/3" CMOS OV60 Focal length: f: 2.1mm
 Operating voltage: 12V DC
 Dimensions: 76mm(W) 26mm(D) 35mm(H)



CA-9922

Number Plate Light Camera for Transit

RCA video connection
 Guide lines selectable by joining green wires
 Built in LED light
 TV system: PAL FPS: 25
 Output resolution: 576i
 Effective pixels: 668 x 576
 Viewing angle: 120°(H) 110°(V)
 Image device: 1/3" CMOS OV60 Focal length: f: 2.1mm
 Operating voltage: 12V DC
 Dimensions: 60mm(W) 31mm(D) 30mm(H)

Handle Bar Camera

Various Vehicle Applications

RCA video connection
 Guide lines selectable via joining green wires
 Built in switch for tailgate
 Fixed mirror image
 TV system: NTSC
 Output resolution: 480i
 FPS: 30
 Effective pixels: 668 x 576
 Viewing angle: 120°(H) 110°(V)
 Image device: 1/3" CMOS OV60
 Focal length: f: 2.1mm
 Operating voltage: 12V DC
 Dimensions:
 CA-9801 110mm(W) 48mm(D) 23mm(H)
 CA-9801DY 110mm(W) 48mm(D) 30mm(H)
 CA-9801-EY 110mm(W) 44mm(D) 28mm(H)

4 D1 Cameras



CA-MB-SPR-CCD

Overhanging Camera

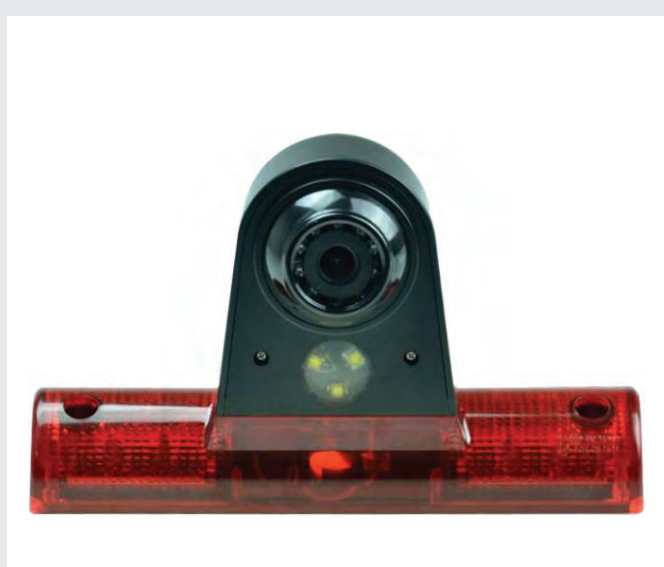
Night vision
4 Pin aviation connection
Roof Mounted Camera
Fixed mirror image
TV system: NTSC / PAL
Output resolution: 480i / 576i
FPS: 30 (NTSC) / 25 (PAL)
Effective pixels: 720 x 480
Viewing angle: 85°(H) 60°(V)
Image device: 1/3" Sony CCD
Focal length: f: 2.1mm
Operating voltage: 12V DC
Dimensions: 132mm(W) 220mm(D) 100mm(H)
CA-MB-SPR-CCD-N (NTSC Version)
CA-MB-SPR-CCD-P (PAL Version)



C-KO-UNI-CAM

Universal Brake Light Camera

4 Pin aviation connection
Universal brake light built in LED red light
Adjustable Ball Camera
Fixed mirror image
TV system: PAL
Output resolution: 576i
FPS: 25
Effective pixels: 500 x 582
Viewing angle: 82°(H) 79°(V) 99°(D)
Image device: 1/3" CMOS
Focal length: f: 2mm
Operating voltage: 12V DC
Dimensions: 125mm(W) 110mm(D) 95mm(H)



C-KO-UNI-CAM-LED

Universal Brake Light Camera with Built in Door Light

4 Pin aviation connection
Universal brake light built in LED red light
15W Door / Work light
Adjustable ball camera
Fixed mirror image
TV system: PAL
Output resolution: 576i
FPS: 25
Effective pixels: 500 x 582
Viewing angle: 82°(H) 79°(V) 99°(D)
Image device: 1/3" CMOS
Focal length: f: 2mm
Operating voltage: 12V DC
Dimensions: 125mm(W) 110mm(D) 95mm(H)



RCAM-0-087-CAM

Heavy Duty Body Mount Camera

Night vision Smart IR
 4 Pin aviation connection
 Built in Microphone for Audio
 Mirror image selectable via screw on camera rear
 TV system: PAL
 Output resolution: 576i
 FPS: 25
 Effective pixels: 960 x 576
 Viewing angle: 80°(H) 60°(V)
 Image device:
 1/3" CMOS PC1058K
 Operating voltage: 12V DC
 Dimensions: 90mm(W)
 62mm(D) 68mm(H)
 Available in Black or White

RCAM-0-087-CAM-W White Version



DF-8084

Heavy Duty Body Mount Camera

Night vision Smart IR
 4 Pin aviation connection
 Built in Microphone for Audio
 Fixed mirror image
 TV system: PAL
 Output resolution: 576i
 FPS: 25
 Effective pixels: 976 x 582
 Viewing angle: 89°(H) 62°(V)
 Image device: 1/4" CMOS
 Focal length: f: 2.8mm
 Operating voltage: 12V
 Dimensions: 60mm(W) 53mm(D) 60mm(H)



CK-15-CAM

Heavy Duty Body Mount Camera

Night vision
 4 Pin aviation connection
 Fixed mirror image
 TV system: PAL
 Output resolution: 576i
 FPS: 25
 Effective pixels: 752 x 582
 Viewing angle: 80°(H) 60°(V)
 Image device: 1/3" Sharp CMOS
 Focal length: f: 2.9mm
 Operating voltage: 12V / 24V DC
 Dimensions: 80mm(W) 63mm(D) 70mm(H)

4 D1 Cameras



C-KO-RCAM-220

Wide Angle Heavy Duty Rear Camera

4 Pin aviation connection

TV system: PAL

Output resolution: 576i

FPS: 25

Viewing angle: 100°(H) 60°(V) 80°(D)

Image device: 1/3" CMOS

Focal length: f: 2.8mm

Operating voltage: 12V DC

Dimensions: 75mm(W)

55mm(D) 75mm(H)

Mirror image

C-KO-RCAM-220-SS (Silver)

C-KO-RCAM-220-B (Black)

C-KO-RCAM-220-B

Black Version



C-KO-BR-RVC07

Wing Mirror Side View Camera

Night vision

4 Pin aviation connection

Can be mounted to the wing mirror

TV system: PAL

Output resolution: 576i

FPS: 25

Effective pixels: 500 x 582

Viewing angle: 89°(H) 70°(V)

Image device: 1/3" CMOS

Focal length: f: 2.8mm

Operating voltage: 12V DC

Dimensions: 80mm(W) 49mm(D) 63mm(H)



C-KO-CAM-410

Side View Camera with Audio

Night vision

4 Pin aviation connection

Built in Microphone for Audio

Mirror image selectable via

jumper plug

TV system: PAL

Output resolution: 576i

FPS: 25

Effective pixels: 728 x 488

Viewing angle: 105°(H) 72°(V)

Image device: 1/3" CMOS

PC1089

Operating voltage: 12V DC

Dimensions: 57mm(W)

75mm(D) 43mm(H)

Available Black or White

White Version



SCAM-SPACER





CAM-DOME-600TVL

Dome Camera with Audio

Night vision
 4 Pin aviation connection
 Built in Microphone for Audio
 Anti-tamper design
 TV system: PAL
 Output resolution: 576i
 FPS: 25
 Effective pixels: 704 X 576
 Viewing angle: 60°(H) 30°(V)
 Image device: 1/3" CMOS
 Operating voltage: 12V DC
 Dimensions: 86mmØ 58mm(H)



CAM-DOME-650-SN

Dome Camera

4 Pin aviation connection
 Plastic Dome Cover
 Anti-tamper design
 Separate 25Ø base
 Mirror image selectable by cutting white wire
 TV system: PAL
 Output resolution: 576i
 FPS: 25
 Effective pixels: 752 x 582
 Viewing angle: 110°(H) 75°(V)
 Image device: 1/3" Sony CCD
 Focal length: f: 2.1mm
 Operating voltage: 12V DC
 Dimensions: 66mmØ 49m(H)

DCAM-ANGLE

Surface Mount Adaptors for Dome Cameras

0°, 15° & 25° available



4 D1 Cameras



CA-9406-PAL

Night Vision Bumper Camera

4 Pin aviation connection
Mini BMW connector to 4 Pin aviation
Mirror image selectable
TV system: PAL
Output resolution: 576i
FPS: 25
Effective pixels: 976 x 582
Viewing angle: 120°(H) 100°(V)
Image device: 1/3" CMOS
Focal length: f: 2.3mm
Operating voltage: 12V DC
Dimensions: 31mm(W) 40mm(D) 31mm(H)



CA-9770-PAL

Dual Camera

RCA connection
Mirror image
Built in microphone
TV system: PAL
Output resolution: 576i
FPS: 25
Effective pixels: 960 x 576
Viewing angle: 75°(H)
Image device: 1/3"
CMOS PC1058K
Operating voltage: 12V DC
Dimensions: 110mm(W)
70mm(D) 80mm(H)
AHD Version available

CAB-DUAL-4PIN

Cable available



CA-9320-800

800TVL Front Camera

4 Pin aviation connection
Mirror image selectable via cutting green wire
Mini BMW connector to 4 Pin aviation
TV system: PAL
Output resolution: 576i
FPS: 25
Effective pixels: 976 x 582
Viewing angle: 110°(H) 80°(V)
Image device: 1/3" SONY CCD
Focal length: f: 2.3mm
Operating voltage: 12V DC
Dimensions: 39mm(W)
35mm(D) 30mm(H)

CA-COVER

Camera Cover for CA-9320-800

Mounts onto windscreen to prevent driver interference





CA-9401

Wedge Camera

RCA video connection
 Guide lines selectable via joining green wires
 Fixed mirror image
 TV system: NTSC
 Output resolution: 480i
 FPS: 30
 Effective pixels: 668 x 576
 Viewing angle: 120°(H) 110°(V)
 Image device: 1/3" CMOS OV60
 Focal length: f: 2.1mm
 Operating voltage: 12V DC
 Dimensions: 30mm(W) 34mm(D) 37mm(H)



COL185-SCR-MK2

Multi Mount Micro Camera

Butterfly / Push Fit mount camera
 Adaptor to side mount camera
 4 Pin aviation connection
 Mirror image selectable by cutting white wire
 Guide lines selectable by cutting green wire
 TV system: PAL
 Output resolution: 576i
 FPS: 25
 Effective pixels: 720 x 540
 Viewing angle: 110°(H) 90°(V)
 Image device: 1/3" CMOS
 Focal length: f: 2.1mm
 Operating voltage: 12V DC
 Dimensions: 37mm(W)
 30mm(D) 27mm(H)

Butterfly Mount



CA-5410-IR

Number Plate Camera with Surround

4 Pin aviation connection
 Mirror image
 Guide lines selectable
 TV system: PAL or NTSC
 Output resolution: 576i/ 480i (NTSC)
 FPS: 25 / 30 (NTSC)

Effective pixels: 648 x 488
 Viewing angle: 120°(H)
 Image device: 1/3" CMOS
 Focal length: f: 2.1mm
 Operating voltage: 12V DC
 Dimensions: 527mm(W) 37mm(D) 125mm(H)

4 D1 Cameras



COL-M90-WHITE

Metal Wedge Camera

Can be mounted horizontal or vertical

RCA video connection

Mini BMW connector to RCA video

Guide lines selected via green cutting lead

Fixed mirror image

TV system: NTSC (COL-M90-N-W) / PAL (COL-M90-P-W)

Output resolution: 480i (NTSC) 576i (PAL)

FPS: 30 (NTSC) 25 (PAL)

Effective pixels: 720 x 540

Viewing angle: 110°(H) 100°(V)

Image device: 1/2" CMOS II

Focal length: f: 1.2mm

Operating voltage: 12V DC

Dimensions: 32mm(W) 34mm(D) 24mm(H)

COL-M90-N-W (NTSC Version) COL-M90-P-W (PAL Version)



COL-M90

Metal Wedge Camera

Can be mounted horizontal or vertical

RCA video connection

Mini BMW connector to RCA video

Guide lines selected via green cutting lead

Fixed mirror image

TV system: NTSC (COL-M90-N-B) / PAL (COL-M90-P-B)

Output resolution: 480i (NTSC) 576i (PAL)

FPS: 30 (NTSC) 25 (PAL)

Effective pixels: 720 x 540

Viewing angle: 110°(H) 100°(V)

Image device: 1/2" CMOS II

Focal length: f: 1.2mm

Operating voltage: 12V DC

Dimensions: 32mm(W) 34mm(D) 24mm(H)

COL-M90-N-B (NTSC Version) COL-M90-P-B (PAL Version)



LED-WLCAM

Work Light with Built in Camera

24W Flood

8 x LED Work Light

4 Pin aviation connection

TV system: PAL

Output resolution: 576i

FPS: 25

Effective pixels: 976 x 592

Viewing angle: 110°(H) 90°(V)

Image device: 1/3" CMOS

Focal length: f: 2.1mm

Operating voltage: 12V / 24V DC

Dimensions: 114mm(W) 51mm(D) 150mm(H)



DWKIT-72S

Digital Wireless Camera Kit

Heavy Duty Rear Camera
 Night Vision
 Built in Wireless Transmitter
 Fixed mirror image
 Camera Dimensions: 80mm(W)
 63mm(D) 70mm(H)
 7" Digital TFT LCD
 Wireless receiver built into monitor
 Delay timer for trigger set on screen
 OSD guide lines
 Can mirror cameras on screen
 Built in sun shade
 Can take 2 cameras
 Operating voltage: 12V / 24V DC
 Monitor Dimensions: 172mm(W)
 45mm(D) 115mm(H)

DWCAM-2S Wireless Digital Camera Additional Camera



WTX-439 / WRX-098

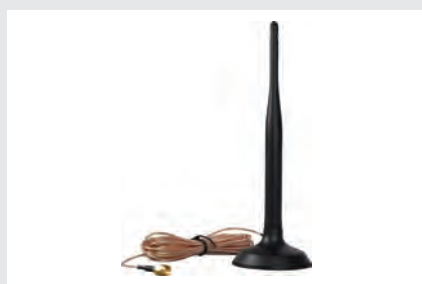
Wireless Transmitter and Receiver

4 Pin aviation connection
 TV system: PAL
 Output resolution: 576i
 Line of sight range: 120m
 Output power: 20dBm
 RF bit rate: 4Mbps
 Spread spectrum: 2400 – 2483.5 MHz
 Latency: 120ms
 Transmission frequency: 2.4GHz
 Operating voltage: 12V / 24V DC
 Dimensions: 105mm(W) x 110(D) x 25mm(H)



DW-PACK

Battery Pack for Wireless Cameras
 Rechargeable Power Pack
 Charges via Mini USB
 Magnetic Base
 2.5mm DC connector to power camera



DW-ANT-CAM

Replacement Antenna for Digital Cameras
 Available from stock in instances of theft or damage



DW-ANT-FLAT

Flat Style Antenna
 Alternative antenna for digital wireless cameras and monitors
 Useful in instances when reception is blocked and requires improving

5 Camera Kits



AHD-CKIT-1080P

7" 1080p AHD Camera Kit

Heavy Duty Rear Camera
Night Vision with Smart IR
4 Pin aviation connection
Camera Dimensions: 80mm(W) 63mm(D) 70mm(H)
20m Camera lead
7" AHD Digital TFT LCD
Powers cameras 12V DC
Can mirror cameras on screen
2 Inputs
1 Trigger
Operating voltage: 12V / 24V DC
Monitor Dimensions: 192mm(W) 32mm(D) 134mm(H)



AHD-CK-01

7" AHD Rear Camera Kit

Heavy Duty Rear Camera
Night Vision with Smart IR
4 Pin aviation connection
Camera Dimensions: 80mm(W) 63mm(D) 70mm(H)
20m Camera lead
7" AHD Digital TFT LCD
Powers cameras 12V DC
Can mirror cameras on screen
2 Inputs
1 Trigger
Operating voltage: 12V / 24V DC
Monitor Dimensions: 180mm(W) 23mm(D) 120mm(H)



AHD-CK-02

7" AHD Rear & Side Camera Kit

Heavy Duty Rear Camera
Night Vision with Smart IR
4 Pin aviation connection
Rear Camera Dimensions: 80mm(W) 63mm(D) 70mm(H)
20m Camera lead
AHD Side View Camera - Night Vision
4 Pin aviation connection
Mirror image & guide line selectable
Side Camera Dimensions: 50mm(W) 68mm(D) 43mm(H)
5m Camera lead
7" AHD Digital TFT LCD
Powers cameras 12V DC
Can mirror cameras on screen
2 Inputs – both used in kit - 1 Trigger
Operating voltage: 12V / 24V DC
Monitor Dimensions: 180mm(W) 23mm(D) 120mm(H)



CK-05-B

5" Camera Kit

Heavy Duty Body Mount Camera
 Night Vision with Smart IR
 4 Pin aviation connection
 Built in Microphone for Audio
 Mirror image selectable via screw on camera rear
 Camera Dimensions: 80mm(W) 63mm(D) 70mm(H)
 5" Digital TFT LCD
 Left and right trigger with timer delay
 Powers cameras 12V DC
 Can mirror cameras on screen
 Detachable sun shade
 Built in speaker
 3 x 4 Pin aviation inputs
 3 Triggers
 Operating voltage: 12V / 24V DC
 Monitor Dimensions: 146mm(W) 31mm(D) 136mm(H)



CK-03-B

7" Camera Kit

Heavy Duty Body Mount Camera
 Night Vision with Smart IR
 4 Pin aviation connection
 Built in Microphone for Audio
 Mirror image selectable via screw on camera rear
 Camera Dimensions: 80mm(W) 63mm(D) 70mm(H)
 7" Digital TFT LCD
 Delay timer for trigger set on screen
 Powers cameras 12V DC
 Can mirror cameras on screen
 Built in sun shade
 Built in speaker
 2 x 4 Pin aviation inputs
 1 Trigger
 Operating voltage: 12V / 24V DC
 Monitor Dimensions: 172mm(W) 45mm(D) 115mm(H)



CK-15-B

7" Camera Kit

Heavy Duty Rear Camera
 Night Vision
 4 Pin aviation connection
 Fixed mirror image
 Camera Dimensions: 80mm(W) 63mm(D) 70mm(H)
 7" Digital TFT LCD
 Delay timer for trigger set on screen
 Reverse trigger priority set on screen
 Powers cameras 12V DC
 Can mirror cameras on screen
 2 x 4 Pin aviation inputs
 2 Triggers
 Operating voltage: 12V / 24V DC
 Monitor Dimensions: 195mm(W) 27mm(D) 128mm(H)

5 Monitors



AHD-MON-C13

7" AHD Dash Mount Monitor

7" Digital panel
AHD / PAL / NTSC compatible
3 x 4 Pin aviation inputs
3 Trigger
Resolution: 1024 x 600
Contrast ratio: 500:1
Aspect ratio: 16:9
Brightness: 400cd/m²
Viewing angle: U: 50° D:70° R/L 70°/70°
Operating voltage: 12V / 24V DC
Dimensions: 180mm(W) 23mm(D) 120mm(H)
Monitor can power cameras



AHD-MON-C90

9" AHD Dash Mount Monitor

9" Digital panel
AHD / PAL / NTSC compatible
2 x 4 Pin aviation inputs
1 Trigger
Resolution: 1024 x 600
Contrast ratio: 500:1
Aspect ratio: 16:9
Brightness: 400cd/m²
Viewing angle: U: 50° D:70° R/L 70°/70°
Operating voltage: 12V DC
Dimensions: 192mm(W) 32mm(D) 134mm(H)
Monitor can power cameras



AHD-MON-1080P

7" AHD 1080p Dash Mount Monitor

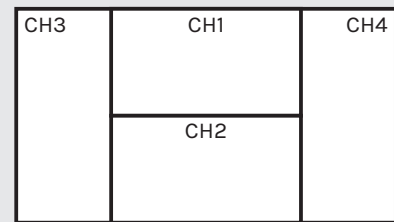
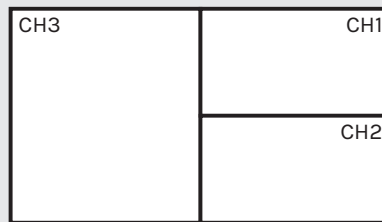
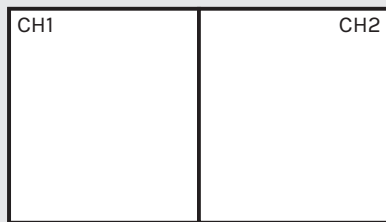
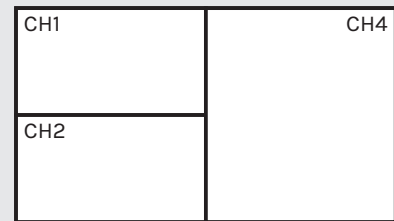
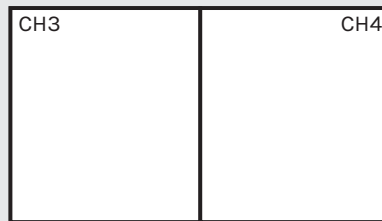
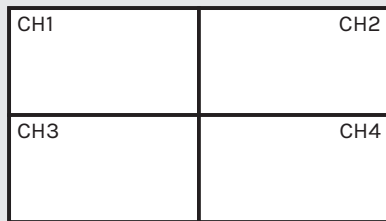
7" Digital panel
AHD / PAL / NTSC compatible
2 x 4 Pin aviation inputs
1 Trigger
Resolution: 1024 x 600
Contrast ratio: 500:1
Aspect ratio: 16:9
Brightness: 400cd/m²
Viewing angle: U: 50° D:70° R/L 70°/70°
Operating voltage: 12V / 24V DC
Dimensions: 192mm(W) 32mm(D) 134mm(H)
Monitor can power cameras



QSM Monitors

7" Quad Dash Mount Monitor

- 7" Digital panel
- 4 x 4 Pin aviation inputs
- 4 Triggers
- Resolution: 1024 x 600
- Contrast ratio: 500:1
- Aspect ratio: 16:9
- Brightness: 400cd/m²
- Viewing angle: U: 50° D:70° R/L 70°/70°
- Operating voltage: 12V / 24V DC
- Dimensions: 192mm(W) 32mm(D) 134mm(H)
- Monitor can power cameras
- Shows up to 4 images on the screen at the same time
- Each camera displayed on screen when triggered
- QSM-MON-C10 PAL / NTSC compatible for D1 Cameras
- QSM-AHD-C10 for AHD Cameras



VGA-MON-D10

7" Dash Mount Monitor with VGA Input

- 7" Digital panel
- PAL / NTSC compatible
- 2 x 4 Pin aviation inputs
- 1 VGA Input
- 1 Trigger
- Resolution: 1024 x 600
- Contrast ratio: 500:1
- Aspect ratio: 16:9
- Brightness: 400cd/m²
- Viewing angle: U: 50° D:70° R/L 70°/70°
- Operating voltage: 12V / 24V DC
- Dimensions: 192mm(W) 32mm(D) 134mm(H)
- Monitor can power cameras

5 Monitors



PV-YW795

7" Dash Mount Monitor

7" Digital panel
PAL / NTSC compatible
2 x 4 Pin aviation inputs
2 Triggers
Resolution: 800 x 480
Contrast ratio: 500:1
Aspect ratio: 16:9
Brightness: 400cd/m²
Viewing angle: U: 50° D:70° R/L 70°/70°
Operating voltage: 12V / 24V DC
Dimensions: 180mm(W) 23mm(D) 120mm(H)
Monitor can power cameras
Audio on CH2



CK-15-MON

7" Dash Mount Monitor

7" Digital panel
PAL / NTSC compatible
2 x 4 Pin aviation inputs
2 Triggers
Resolution: 800 x 480
Contrast ratio: 500:1
Aspect ratio: 16:9
Brightness: 400cd/m²
Viewing angle: U: 50° D:70° R/L 70°/70°
Operating voltage: 12V / 24V DC
Dimensions: 195mm(W) 27mm(D) 128mm(H)
Monitor can power cameras



PV-YW-568

5.6" Dash Mount Monitor

5.6" Digital panel
PAL / NTSC compatible
2 x 4 Pin aviation inputs
1 Trigger
Resolution: 320 x 234
Contrast ratio: 500:1
Aspect ratio: 4:3
Brightness: 400cd/m²
Viewing angle: U: 50° D:70° R/L 70°/70°
Operating voltage: 12V / 24V DC
Dimensions: 146mm(W) 28mm(D) 110mm(H)
Monitor can power cameras
Audio on CH2



PV-YW-7WP

7" Waterproof Monitor

7" Digital panel
PAL / NTSC compatible
Guidelines & mirror selectable
3 x 4 Pin aviation input
2 Triggers
Resolution: 800 x 480
Contrast ratio: 450:1
Aspect ratio: 16:9
Brightness: 400cd/m²
Viewing angle: U: 50° D:70° R/L 70°/70°
Operating voltage: 12V / 24V DC
Dimensions: 188mm(W) 32.5mm(D) 140mm(H)



PV-YW501

5" Monitor

5" Digital panel
PAL / NTSC compatible
2 x RCA inputs
Trigger by video signal
Resolution: 1200 x 680
Contrast ratio: 350:1
Aspect ratio: 16:9
Brightness: 400cd/m²
Viewing angle: U: 50° D:70° R/L 70°/70°
Operating voltage: 12V DC
Dimensions: 125mm(W) 40mm(D) 95mm(H)

5 Monitors



C-KO-MON-7HDMI

7" HDMI Monitor

7" Digital panel
PAL / NTSC compatible
Guidelines & mirror selectable
2 x RCA input
1 x HDMI input
1 Trigger
Resolution: 800 x 480
Contrast ratio: 500:1
Aspect ratio: 16:9
Brightness: 400cd/m²
Viewing angle: U: 50° D:70° R/L 70°/70°
Operating voltage: 12V / 24V DC
Dimensions: 180mm(W) 23mm(D) 120mm(H)



C-KO-MON-5HDMI

5" HDMI Monitor

5" Digital panel
PAL / NTSC compatible
Guidelines & mirror selectable
2 x RCA input
1 x HDMI input
1 Trigger
Resolution: 800 x 480
Contrast ratio: 500:1
Aspect ratio: 16:9
Brightness: 400cd/m²
Viewing angle: U: 50° D:70° R/L 70°/70°
Operating voltage: 12V / 24V DC
Dimensions: 147mm(W) 30mm(D) 110mm(H)



TD-03

4.3" Mirror Monitor with Stalk

Universal mount
 Built in Ambient Light Sensor
 4.3" Digital panel
 PAL / NTSC compatible
 2 x RCA video inputs
 1 Trigger
 Resolution: 480 x 272
 Contrast ratio: 300:1
 Aspect ratio: 16:9
 Brightness: 250cd/m²
 Viewing angle: U: 50° D:70° R/L 70°/70°
 Operating voltage: 12V DC
 Dimensions: 270mm(W) 44mm(D) 80mm(H)



Other options available on request

FORD

TC

VW

VW-2

FORD-COVER



TD-04

4.3" Mirror Monitor with Stalk

New rimless design
 Universal mount
 Built in Ambient Light Sensor
 4.3" Digital panel
 PAL / NTSC compatible
 2 x RCA video inputs
 1 Trigger
 Resolution: 480 x 272
 Contrast ratio: 300:1
 Aspect ratio: 16:9
 Brightness: 250cd/m²
 Viewing angle: U: 50° D:70° R/L 70°/70°
 Operating voltage: 12V DC
 Dimensions: 270mm(W) 44mm(D) 80mm(H)



5 Mirror Monitors



C-KO-MIR-5C

5" Mirror Monitor Clip On

5" Digital panel
PAL / NTSC compatible
2 x RCA video inputs
Switches with video signal
Resolution: 480 x 272
Contrast ratio: 300:1
Aspect ratio: 16:9
Brightness: 500cd/m²
Viewing angle: U: 50° D:70° R/L 70°/70°
Operating voltage: 12V DC
Dimensions: 276mm(W)
25mm(D) 97mm(H)

Rear of Product



TC-06

4.3" Mirror Monitor Clip On

4.3" Digital panel
PAL / NTSC compatible
2 x RCA video inputs
1 Trigger
Resolution: 480 x 272
Contrast ratio: 300:1
Aspect ratio: 16:9
Brightness: 250cd/m²
Viewing angle: U: 50° D:70° R/L 70°/70°
Operating voltage: 12V DC
Dimensions: 276mm(W)
30mm(D) 39mm(H)

Rear of Product



C-KO-7MM

7" Mirror Monitor Clip On

7" Digital panel
PAL / NTSC compatible
2 x RCA video inputs
1 Trigger
Resolution: 800 x 480
Contrast ratio: 300:1
Aspect ratio: 16:9
Brightness: 250cd/m²
Viewing angle: U: 50° D:70° R/L 70°/70°
Operating voltage: 12V DC
Dimensions: 250mm(W)
21mm(D) 109mm(H)

Rear of Product





Universal stalk included



C-KO-MIR-5S

5" Mirror Monitor with Universal Stalk

5" Digital panel
 PAL / NTSC compatible
 2 x RCA video inputs
 Switches with video signal
 Resolution: 480 x 272
 Contrast ratio: 300:1
 Aspect ratio: 16:9
 Brightness: 500cd/m²
 Viewing angle: U: 50° D:70° R/L 70°/70°
 Operating voltage: 12V DC
 Dimensions: 276mm(W)
 25mm(D) 97mm(H)

Rear of Product



Universal stalk included



TC-05

4.3" Mirror Monitor with Universal Stalk

4.3" Digital panel
 PAL / NTSC compatible
 2 x RCA video inputs
 1 Trigger
 Resolution: 480 x 272
 Contrast ratio: 300:1
 Aspect ratio: 16:9
 Brightness: 250cd/m²
 Viewing angle: U: 50° D:70° R/L 70°/70°
 Operating voltage: 12V DC
 Dimensions: 276mm(W)
 30mm(D) 39mm(H)

Rear of Product



Universal stalk included



C-KO-75M-STALK

Mirror Monitor with Universal Stalk

7" Digital panel
 PAL / NTSC compatible
 2 x RCA video inputs
 1 Trigger
 Resolution: 800 x 480
 Contrast ratio: 300:1
 Aspect ratio: 16:9
 Brightness: 250cd/m²
 Viewing angle: U: 50° D:70° R/L 70°/70°
 Operating voltage: 12V DC
 Dimensions: 250mm(W)
 21mm(D) 109mm(H)

Rear of Product



5 Mirror Monitors



STALK#1

For use with
TC-05,
C-KO-MIR-5S,
C-KO-75M-STALK



STALK#2

For use with
TC-05,
C-KO-MIR-5S,
C-KO-75M-STALK



STALK#3

For use with
TC-05,
C-KO-MIR-5S,
C-KO-75M-STALK



STALK#12

For use with
TC-05,
C-KO-MIR-5S,
C-KO-75M-STALK





STALK#7

For use with
TC-05,
C-KO-MIR-5S,
C-KO-75M-STALK



STALK#35

For use with
TC-05,
C-KO-MIR-5S,
C-KO-75M-STALK



STALK#42

For use with
TC-05,
C-KO-MIR-5S,
C-KO-75M-STALK



LOCAA319-0.5

Rear View Mirror Bonder

0.5ml

Suitable for glass and metal only

5 360° Vision

OMNI-VUE

360° 'BIRDS-EYE-VIEW' Camera System

The new 360° 'Birds-Eye-View' camera system from CKO utilises 4 cameras, 1 on each side of the vehicle to provide a top down view of the entire vehicle. All the cameras include ultra-wide-angle lenses, so their field of vision overlap at the corners of the vehicle. An ECU (Electronic Control Unit) is used to blend the 4 images together to produce the look-down view and a 'vehicle mask', which looks like the vehicle, is used to cover the void that's behind the cameras (the vehicle).

Once fitted, the system will require calibrating (simply transfer a file to CKO). Calibration ensures the correct view is configured for that vehicle. The system can be used with any type and size of vehicle.

The 'birds-eye-view' is always displayed on the monitors primary view and the second view can automatically switch depending on the manoeuvre being carried out by the vehicle (if the correct wiring configuration exists). Whilst it is recommended to use a separate monitor for the 360° system, it is also possible to utilise the vehicles existing monitor (vehicle specific leads available on request).

The system will 'plug-and-play' connect into a DVR to allow the recording of images from all cameras. Ideal for training purposes and for protecting drivers against false insurance claims.

All cables and accessories provided

Remote configuration by experienced programmers with pre-sets for optimal birds-eye view

Eliminates blind spots

Best option in urban environment for safety

Auto-switches when turning and reversing to the specific camera

The standard system, includes the following components:

4 ultra-wide-angle cameras (metal case, easy fit) and cables (1x18m, 2x10m & 1x5m)

7" Monitor

ECU

Remote Control

Upgrade Options:

Digital Video Recorder

Waterproof Monitor (ideal for Plant use)

Side Sensors

Turning Warning Alarm

48

020 8863 8333 • www.c-ko.co.uk • sales@c-ko.co.uk



C-KO-ULTRASCAN-01

4 Sensor Side Proximity Sensor System

Audible and visual warning
 Detection range: 0 – 200cm (selectable via dip switches)
 Works off the brake and indicator
 Supplied with manual override switch
 Buzzer and LED work on indicator
 Only LED works on the brake
 Operating voltage: 24V DC
 Sensor horizontal detection angle 89°
 Sensor vertical detection angle 43°

ULTRASCAN-MOUNT Metal Underhanging Mount for Sensors



C-KO-ULTRASCAN-04

4 Sensor Side Proximity Sensor System with GPS Speed Detection

Audible and visual traffic light display warning
 Detection range: 0 – 200cm
 GPS Built in off above 20Kph
 Brake input
 Sleep secure function
 Operating voltage: 9V - 32V DC

C-KO-ULTRASCAN-EXT Sensor Cable Extenders for C-KO-ULTRASCAN Systems Available in 1M, 2M & 4M



C-KO-ULTRASCAN-06

6 Sensor Side Proximity Sensor System with GPS Speed Detection

Audible and visual traffic light display warning
 Detection range: 0 – 200cm
 GPS Built in off above 20Kph
 Brake input
 Sleep secure function
 Operating voltage: 9V - 32V DC

C-KO-ULTRASCAN-EXT Sensor Cable Extenders for C-KO-ULTRASCAN Systems Available in 1M, 2M & 4M



6 LCV Parking Sensors



RS-2-22-RM-A

2 Head Rubberised Parking Sensors for Metal Bumpers

Push fit rubber heads
Number of heads: 2
Sensor hole size: 22 \varnothing mm
Length of cable 3m at the furthest sensor
Detection range: 1.5m to 0.3m
Sensitivity adjustment
Operating voltage: 12V DC
20° Angled heads



RS-4-22-RM-A

4 Head Rubberised Parking Sensors for Metal Bumpers

Push fit rubber heads
Number of heads: 4
Sensor hole size: 22 \varnothing mm
Length of cable 3m at the furthest sensor
Detection range: 1.5m to 0.3m
Sensitivity adjustment
Operating voltage: 12V DC
20° Angled heads



RS-4-22/26-RBM-B

Multipurpose 22mm Sensors with Adaptor to 26mm

4 x 22mm sensor heads
4 x 26mm sensor rings for metal bumpers
22mm & 26mm hole cutters
Buzzer included
Heads on 11cm lead
2.5m Extension lead to box
Operating voltage: 12V DC
Brain 75 x 54 x 25 mm
Detection range: 150cm / 85cm



RS-4-18-R-I

18mm Parking Sensors

Audible Buzzer sounds automatically when reversing
 Intelligent ECU - detects tow bars, bikes and wheel covers
 4 x Sensor Heads
 18.8mm Hole Cutter
 Sensitivity adjustment
 Operating voltage: 12V DC
 Includes angle rings
 Paintable sensors
 Waterproof connectors detach from sensor heads



RS-PRO-OES

Advanced Intelligence Dynamic Detection Parking Sensors

Self-Learning of Sensor Positioning
 PC & Android Programmable (with additional adaptor)
 Compatible with CAN-Bus vehicles
 Compatible with vehicles with LED
 Self-Diagnosis 'fault finding'
 Sensitivity and Detection adjustment by Dip Switches
 Operating voltage: 12V DC
 Provided with 3, 6 & 12-degree angled adaptors
 Flush Fitting adaptor included
 Paintable, with sensor head holder for easy painting

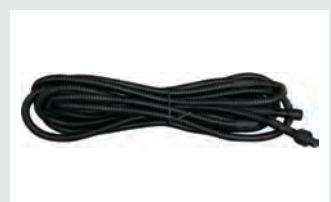


RS-4000-F

GPS Speed Controlled Front Parking Sensors

Quick Installation - simple live & earth
 5 second off delay for traffic
 Push fit gloss 22mm black heads
 Sensors on between 1mph - 6mph
 Length of cable 3m at the furthest sensor
 Detection range: 1.2m to 0.3m
 Operating voltage: 12V DC
 Variable volume Buzzer included
 Optional display available
**Rear version available
 without GPS (RS-4000)**

Sensor Extension Cables



6 Sensor Accessories



RS-DISPLAY

Visual Distance Display

Compatible with:

RS-4-18-R-I

RS-2-22-RM-A

RS-4-22-RM-A

RS-22/26-RMB

See price list for specific compatible parts



RS-PS-EXT

Sensor Extension Cable

See price list for specific compatible parts

3 Metre Length



RS-PRO-ANDROID

Android Adaptor for PRO-OES

Change settings on the parking sensors using an Android device
APK. Software included

Plug into ECU module



RS-PRO-ADAPTOR

Update Settings on the PRO-OES Parking Sensors

Software included

Plug into ECU module



ALM-HBR-V2

Handbrake Warning Alarm

If the driver door is opened whilst the handbrake is not engaged the alarm will sound

"Warning, handbrake not applied"

Connected to handbrake and door trigger



AVSM14CLH

Left Turn Alarm

Single unit ideal for small vehicles where 1 alarm will suffice.

UK Spec – LEFT TURN

Automatically mutes when hazards are in operation to avoid confusion.

Talking audio alert 'STAND CLEAR, THIS VEHICLE IS TURNING LEFT'

Rated voltage: 12/24 dc

Rated current 0.4a

Db rating 85 db @ 1 metre

Frequency rating 2500 +/- 10%

Modulation 80 per minute

Overvoltage & surge protected

Reverse polarity protected

Fully encapsulated waterproof to IP65 minimum

Dimensions 122 x 81 x 55mm

Right turn alarm alternative also available



AVAL2-14CLHO

ALARM-A-LIGHT

Talking audio alert 'STAND CLEAR, THIS VEHICLE IS TURNING LEFT'

Orange LED talking Alarm-a-light.

The ultimate alarm and light warning system.

When the alarm is activated the lights flash in unison with the sound, when mute or half volume are selected the lights flash brighter to highlight the danger.

Dual voltage

CE and emc approved

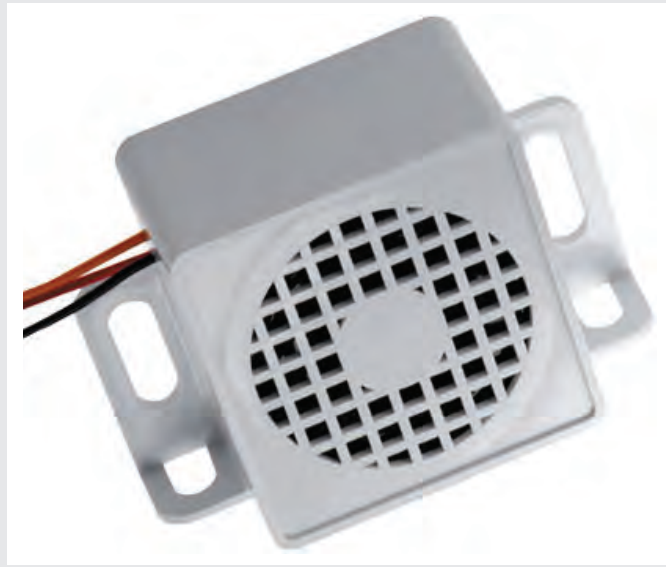
M.I.R.A. Tested for all on and off highway applications Epoxy sealed for greater durability against water Complete with anti-vibration gasket and mounting screws

E marked e11*72/245*2009/19*7568*00

10R approved 10R-037568

Rear and right turn alarm alternatives available

7 Warning Alarms



AVRWN02

Non-Bleeping Multi-Frequency Sound

Operating voltage: 12V / 24V DC
Working voltage range: 9v thru 28v
Rated current 0.50mA
Db rating 88dB
Overvoltage & surge protected
Reverse polarity protected
Fully encapsulated waterproof to ip65 minimum
Dimensions 100mm (L) x 65mm (H) x 46mm (D)
AVRWN02 - Night silent through orange wire
AVRWN02R2 - Night silent through double engage



AVR15C

Reverse Vocal Alarm

"This vehicle is reversing ..."
Operating voltage: 12V / 24V DC
Working voltage range: 9v thru 28v
Rated current 0.4a and below at rated voltage
Db rating 100db @ 1 metre
Frequency rating 1300 +/- 10%
Modulation 70 per minute
Overvoltage & surge protected
Reverse polarity protected
Fully encapsulated waterproof to ip65 minimum
Dimensions 75 x 70 ϕ mm
Night silent through orange wire



ALM-PROG

Programmable Alarm

4MB
MP3 File
USB
Operating voltage: 12V / 24V DC
Dimensions 105 x 45 x 68 mm

**AVR81****Night Silent Reverse Alarm**

Operating voltage: 12V / 24V DC
 Working voltage range: 9v thru 28v
 Rated current 0.4a and below at rated voltage
 Db rating 100db @ 1 metre
 Frequency rating 1300 +/- 10%
 Modulation 70 per minute
 Overvoltage & surge protected
 Reverse polarity protected
 Fully encapsulated waterproof to ip65 minimum
 Dimensions 73.5 x 70ø mm
 Night silent through orange wire

**AVR85R2****Double Engage Reverse Alarm**

Operating voltage: 12V / 24V DC
 Rated current 0.4a and below at rated voltage
 Min db rating 92db @ 1 metre
 Frequency rating 900 +/- 10%
 Modulation: 70 per minute
 Overvoltage & surge protected
 Reverse polarity protected
 Fully encapsulated waterproof to ip65 minimum
 Dimensions 101 x 67 x 45mm
 Case material abs
 Operating temperature -40c to + 85c

**AVR85-3****Night Silent Reverse Alarm**

Operating voltage: 12V / 24V DC
 Rated current 0.4a and below at rated voltage
 Min db rating 92db @ 1 metre
 Frequency rating 900 +/- 10%
 Modulation: 70 per minute
 Overvoltage & surge protected
 Reverse polarity protected
 Fully encapsulated waterproof to ip65 minimum
 Dimensions 101 x 67 x 45mm
 Case material abs
 Operating temperature -40c to + 85c
 Night silent through orange wire

7 Beacons



LED-BC201

Beacon - 1 Bolt

Approval: ECE R10/R65
Approved Voltage: 12/24 V DC
IP Rating: IP65
Output: 3W LEDs x 16
Patterns: 3 Flash Patterns
Dimensions:
201 - 194mm x 127mm



LED-BC202

Beacon - Din Stem

Approval: ECE R10/R65
Approved Voltage: 12/24 V DC
IP Rating: IP65
Output: 3W LEDs x 16
Patterns: 3 Flash Patterns
Dimensions:
202 - 173mm x 127mm



LED-BC203

Beacon - 3 Bolt

Approval: ECE R10/R65
Approved Voltage: 12/24 V DC
IP Rating: IP65
Output: 3W LEDs x 16
Patterns: 3 Flash Patterns
Dimensions:
203 - 160mm x 140mm



LED-BC204

Beacon - Flexi Din

Approval: ECE R10/R65
Approved Voltage: 12/24 V DC
IP Rating: IP65
Output: 3W LEDs x 16
Patterns: 3 Flash Patterns
Dimensions:
204 - 240mm x 127mm



LED-BC205

Beacon - Vacuum Magnet

Approval: ECE R10/R65
Approved Voltage: 12/24 V DC
IP Rating: IP65
Output: 3W LEDs x 16
Patterns: 3 Flash Patterns
Dimensions:
205 - 169mm x 127mm

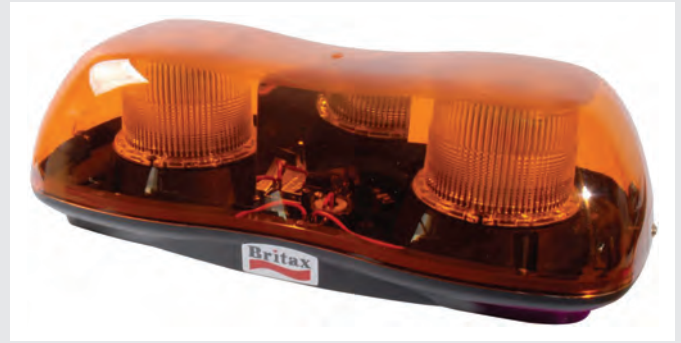
Other Lights Available



LED-LB110-1B

LED Mini Compact Light Bar

Approval: ECE R10/R65 Approved
 Operating voltage: 12V / 24V DC
 IP Rating: IP65
 Output: 3W LEDs x 30
 Patterns: 26 Flash Patterns
 Additional: Cable with switch
 Amber
 Dimensions: 280mm x 165mm x 53mm
 Single bolt, 2 bolt and magnetic mount available



A451.00.LMV

LED Mini Light Bar

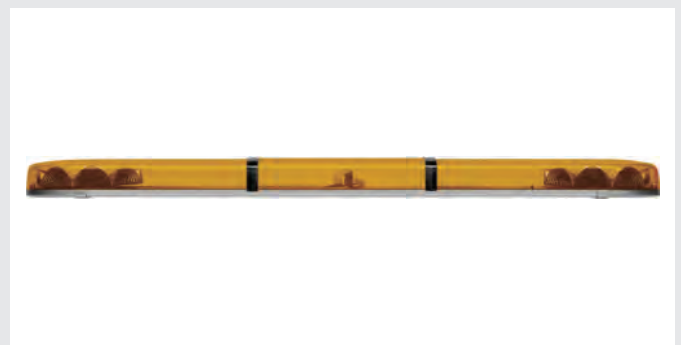
Approval: ECE R10 Approved
 Operating voltage: 12V / 24V DC
 IP Rating: IP65
 Output: 3W LEDs x 2 Modules
 Amber lens



LED-LB700

LED Light Bar

Approval: ECE R10/R65 Approved
 (Blue/Red/White/Green R10 Only)
 Operating voltage: 12V / 24V DC
 IP Rating: IP65
 Warranty: 2 Year Warranty
 Output: 3W LEDs
 Patterns: 17 Flash Patterns including Controller
 Additional: Mounting brackets included
 Clear Polycarbonate Lens
 Available in amber, blue, red, white and green
 Various sizes available from 570mm to 1770mm



EQLB482AC

LED Light Bar

Approval: ECE R10/R65 Approved
 Operating voltage: 12V / 24V DC
 IP Rating: IP65
 Output: 3W LEDs x 9
 Patterns: 4 Flash Patterns
 Amber or clear polycarbonate lens
 Dimensions: 1220mm / 4ft



7 Work Lights



LED-WL601-S

Spot Work Light

Approval: ECE R10 Approved
Voltage: 10-30V DC

IP Rating: IP67

Warranty: 1 Year Warranty
Die Cast Aluminium Housing

Output: 18W (6*3w LEDs) - 1260LM

Patterns: Spot or Flood Beam
Stainless Steel Bracket



LED-WL602-F

Flood Work Light

Approval: ECE R10 Approved
Voltage: 10-30V DC

IP Rating: IP67

Warranty: 1 Year Warranty
Output: 27W (9*3wLEDs) -
1400LM

Patterns: Spot or Flood Beam
Die Cast Aluminium Housing
Stainless Steel Bracket



LED-WL603-F

Flood Work Light

Approval: ECE R10 Approved
Voltage: 10-30V DC

IP Rating: IP67

Warranty: 1 Year Warranty
Output: 48W (16*3wLEDs) -
2400LM

Patterns: Spot or Flood Beam
Die Cast Aluminium Housing
Stainless Steel Bracket



LED-WL604-S

Spot Work Light

Approval: ECE R10 Approved
Voltage: 10-30V DC

IP Rating: IP67

Warranty: 1 Year Warranty
Output: 12W (4*3wLEDs) -
1080LMM

Patterns: Spot or Flood Beam
Die Cast Aluminium Housing
Stainless Steel Bracket



LED-WL605-F

Flood Work Light

Approval: ECE R10 Approved
Voltage: 10-30V DC

IP Rating: IP67

Warranty: 1 Year Warranty
Output: 27W (9*3wLEDs) -
1400LM

Patterns: Spot or Flood Beam
Die Cast Aluminium Housing
Stainless Steel Bracket



LED-WL606-F

Flood Work Light

Approval: ECE R10 Approved
Voltage: 10-30V DC

IP Rating: IP67

Warranty: 1 Year Warranty
Output: 27W (9*3wLEDs) -
1400LM

Patterns: Spot or Flood Beam
Die Cast Aluminium Housing
Magnetic Base



LED-WLCAM

Work Light with Built in Camera

24W Flood 8 x LED Work Light
4 Pin aviation connection

TV system: PAL

Effective pixels: 976 x 592

Viewing angle: 110°(H) 90°(V)

Image device: 1/3" CMOS

Focal length: f: 2.1mm

Operating voltage: 12V / 24V DC

Dimensions: 114mm(W)

51mm(D) 150mm(H)



LPR103DVA

Low Profile Amber Strobe

Approval: ECE R10/R65
 Operating voltage: 12V/24V DC
 IP Rating: IP67
 Output: 3 x 1W LEDs

Patterns: 11 Flash Patterns
 Synchronisation with up to 20 lights
 Dimensions:
 89mm x 30mm x 8mm



LED3DVA180

Amber Strobe Light

180° visibility
 Approval: ECE R10/R65
 Operating voltage: 12V/24V DC
 IP Rating: IP67

Output: 3 x 1W LEDs
 Patterns: 10 Flash Patterns
 Synchronisation with up to 10 lights
 Dimensions:
 111mm x 37mm x 23mm



LED3DVA

Amber Strobe Light

Approval: ECE R10/R65
 Operating voltage: 12V/24V DC
 IP Rating: IP67
 Output: 3 x 3W LEDs

Patterns: 10 Flash Patterns
 Synchronisation with up to 10 lights
 Dimensions:
 94mm x 37mm x 27mm



LED-4HA

Amber LED Heads

Approval: ECE R10/R65
 Operating voltage: 12V/24V DC
 IP Rating: IP67
 Output: 9 x 3W LEDs

Patterns: 18 Flash Patterns
 Synchronisation wire
 Dimensions:
 95.5mm x 28mm x 19mm



LED-6HA

Amber LED Heads

Approval: ECE R10/R65
 Operating voltage: 12V/24V DC
 IP Rating: IP67

Output: 9 x 3W LEDs
 Patterns: 18 Flash Patterns
 Synchronisation wire
 Dimensions: 128mm x 28mm x 19mm

7 Interior Lights

PIR Motion Sense Interior LED Light

Operating voltage: 12V / 24V DC
Colour temperature: 4500K
Diffused polycarbonate lens
ECE R10 approved



13026WM-PIR
51x 0.5watt LEDs
750 effective lumens
Dimensions: \varnothing 130mm x 18.5mm



13614WM-PIR
27x 0.5watt LEDs
450 effective lumens
Dimensions: 136mm x 66mm x 16mm



18621WM-PIR
42x 0.5watt LEDs
650 effective lumens
Dimensions: 186mm x 66mm x 16mm

Interior Light Strip

Slimline Design
180° Light Dispersion
Aluminium alloy housing
Polycarbonate Construction
Frosted Lens for diffused light
Operating voltage: 10V / 30V DC



LED-INT-173
Output: 22 High Powered LEDs
Dimensions: 173mm x 57mm x 15mm



LED-INT-300
Output: 54 High Powered LEDs
Dimensions: 300mm x 57mm x 15mm



LED-INT-510

Interior Light Strip
Output: 30 High Powered LEDs
Slimline Design
180° Light Dispersion
Silicon Lens
Dimensions: 533mm Length
Aluminium Housing
Operating voltage: 12V DC



DRL-VIN-C01

Curved Day Running Light

Sold in pairs

5 x CREE LED Bulbs per lamp

6500K LED

Operating voltage: 12V / 24V DC

Turn on when ACC connected

3 options for headlight connection

1. White Off
2. Green Dim Medium
3. Brown Dim Low

Lamp dimensions: 20mm (H) x 295mm (L) x 90mm (D)



DRL-VIN-C02

Curved Day Running Light

Sold in pairs

5 x CREE LED Bulbs per lamp

6500K LED

Operating voltage: 12V / 24V DC

Turn on when ACC connected

Turn off when headlights on

Lamp dimensions: 20mm (H) x 245mm (L) x 70mm (D)

8 Heated Seats



QZ-CK01/A0(A)

High / Low Switch Heated Seats

2 pads for one seat

High / Low / Off Switch

Pad Dimensions: 277 x 545mm

45 degrees C - 70 degrees C

12 Volt

E-Marked



QZ-CK01/A0(D)

3 Stage Heated Seat Pads

2 pad heated seat elements

2 pads per seat

3 stage variable heat settings

Carbon fibre design

Max temp 70C

50W max power consumption

Current drain 4.2A (max), 2.5A (med) 1.25A (low)

Dimensions 450 x 280 x 0.3mm



QZ-CK02/A0(A)

High / Low Switch Split Pad Heated Seats

4 Pads per seat

High / Low / Off Switch

Pad Dimensions: 138 x 500mm

45 degrees C - 70 degrees C

12 Volt

E-Marked



RM-173-HD-BLACK

17.3" Roof Mount Monitor

Drop down roof monitor
 17.3" TFT LCD panel - LED edge lit screen
 Resolution: 1920 x 1080 (full HD)
 Aspect ratio: 16:9 - Contrast ratio: 10000:1
 PAL/NTSC auto switching
 3 Video inputs (2x RCA, 1x HDMI)
 2 Audio inputs (1x RCA, 1x HDMI)
 Power: 12V DC
 Built in speakers
 Built in single channel IR transmitter
 Built in FM transmitter
 HDMI input supports up to 1080p
 Supports USB up to 32GB
 Supports Micro SD card up to 32GB
 Dimensions: 458 (side - side) x 340 (front - back)
 275 (screen drop) mm



RM-HD102-DVD-B

10.2" DVD Roof Mount Monitor

10" Digital TFT panel
 Resolution: 1024 x 600
 Touch button controls
 Built in surrounding light
 Panel open angle: 180°
 2 AV inputs / 1 AV output
 Built in USB port and SD card slot
 Built in IR & FM Transmitter
 Built in HDMI input port
 Colour: Black
 Dimensions: 310 (side - side) x 278 (front - back)
 215 (screen drop) mm



RM-HD133-DVD

13.3" DVD Roof Mount Monitor

13.3" TFT LCD panel - LED edge lit screen
 Resolution: 1280 x 800
 Aspect ratio: 16:9 - Contrast ratio: 1000:1
 PAL/NTSC auto switching
 2 AV inputs (one via fly lead, one via 3.5mm jack on the side of the unit)
 1 AV output - Power: 12V DC
 Built in speakers - Built in dual channel IR transmitter
 Built in FM transmitter
 HDMI input supports up to 1080p
 Supports USB up to 32GB
 Supports SD card up to 32GB
 Door light trigger
 Black and Grey covers included
 Dimensions: 416 (side - side) x 353 (front - back)
 250 (screen drop) mm

9 Rear Seat



C-KO-HR-POD-BENTLEY

10.1" Ultra-thin Touch Screen Android Headrest Player

Sold in pairs
Android 4.4.4 O.S.
10.1-inch digital screen
24-bit true colour/LED low power consumption backlight
Multi-points capacitive touch screen
Powerful ARM Cortex-A7 platform
1G DDR3 (quad-core)
Built-in 8GB FLASH storage
High definition panel:1024(W)**(RGB)*600(H)
Built-in IR/FM Transmitter
USB/Micro SD card reader
Built-in Bluetooth
Earphone jack
1-way video input, 1-way audio input & 1-way audio output
Power supply: DC12V
Micro-SD(H): Max:64G
Built-in dual speakers
Support Wi-Fi 802.1.1 b/g/n
Includes mounting bracket



C-KO-HR-POD-HDMI-DVD-BL

9" Headrest Pod

Sold in pairs
9" TFT LCD panel
LED edge lit screen
Resolution: 800 x 480
Aspect ratio: 16:9
Contrast ratio: 10000:1
PAL/NTSC auto switching
1 AV input
1 AV output
Power: 12V DC
Built in speakers
Built in dual channel IR transmitter
Built in FM transmitter
HDMI input supports up to 1080p
Supports USB up to 32GB
Dimensions: 340mm x 325mm x 250mm

DVBT-HD630

DVBT-T2 TV Tuner with Antenna

Rear camera input with voltage trigger (RCA)
 Monitor port for device control with select head units
 (Sony, Kenwood and JVC)
 Tuner type: DVBT-T2
 Number of tuners: 2
 Output resolution: 1080p
 TV system: PAL/NTSC
 Frequency range: VHF and UHF band
 Antenna: Active 5V

USB inputs: 2 (1 charge, 1 media)
 RCA input: 1
 HDMI input: 1
 RCA output: 1
 HDMI output: 1
 HDD support: Yes up to 2TB
 MHL support: Yes (Apple, Android)
 Dimensions: 185mm(W) 130mm (L) 30mm (H)
 Connection type: RCA, HDMI, F Connector



NESA-DVD-1005

Slim DVD Player with DIN Cage Fitting

In car DVD player
 Din cage conversion kit supplied
 Output resolution: 576i
 Disc support: DVD, CD, CDR, CDRW, VCD
 Mounting: Vertical / Horizontal
 TV system: PAL / NTSC
 RCA output
 USB input
 External remote eye

Power consumption: 1.5A
 Operating voltage: 12V DC
 Dimensions: 146mm (W) x 179mm (D) x 38mm (H)



9 Rosen

ROSEN-AV7950H

Rosen Rear Seat Entertainment

Headrest replacement with tablet-like styling, capacitive touch controls and the ability to configure the system to meet the family's needs. System includes two factory-match headrests with integrated 7.0" LCD Hi-Def displays, choice of media source devices, HDMI input to connect your smartphone, tablet or other HDMI devices like Google Chromecast, Roku Stick, Amazon Fire TV Stick to stream video via a Wi-Fi connection, auxiliary input for external sources, full system controls, 2-way up-down tilt, all-channel FM transmitter to play audio through the vehicle's sound system, the ability to add front seat remote controls for each screen, a second auxiliary input for video game consoles, outputs for 2 additional screens and more.

Compatibility: DVD, CD, MP3, HDMI

USB charging port

Wireless remote control - 2-fold flat headphones

7" high definition digital LCD display

Media FM transmitter - media sharing between displays

Tilt screen





HP-230

Dual Channel IR Headphones

2 Channel Infrared Headphone

Adjustable silicone headband and faux leather ear pads for maximum comfort

Ear cups swivel independently and fold flat for convenient storage

Built-in mute switch

7.5m maximum operational range

Auto off timer to increase battery life

40mm Mylar extended frequency driver

Variable volume level control

Channel 1: Left 2.3mHz, Right 2.8mHz

Channel 2: Left 3.2mHz, Right 3.8mHz

Requires 2 AAA batteries (included)

Supplied with soft touch cinch carry bag



VST-VHP-KIT

RF Headphone Kit

2 x RF Headphones

1 x Transmitter

Dual Channel RF

900MHz

Foldable design

Hard storage case included

Headphones require 2 x AAA batteries each

Transmitter with 2 inputs

Transmitter Dimensions: 180 x 70 x 25mm

Additional headphones also available



ROSEN-AC3640

Fold Flat Design

Wireless Dual Channel Headphone

Rosen

AAA Batteries supplied

Volume Switch on Earpiece for easy adjustment

10 USB Chargers



USB-12V-MINI

12 Volt to 5 Volt

For use with dash cameras and other 5-volt applications
Mini USB connection
Fused



USB-CHARGE-3

USB Charging Point

2 Port USB Socket
Push fit charger
Rubber dust cover
Output voltage: 5V
Output rating: 3.1A total
Operating voltage: 12V / 24V DC
Dimensions: 35mm(W) 40mm(D) 35mm(H)

Side View



USB-CHARGE-4

USB Charging Point

2 Port USB Socket
Standard nut installation charger
Rubber dust cover
Output voltage: 5V
Output rating: 3.1A total
Operating voltage: 12V / 24V DC
Dimensions: 60mm(W) 40mm(D) 43mm(H)



USB-CHARGE-5

USB Charging Point

Single Port
Output voltage: 5V
Output rating: 2.4A
Operating voltage: 12V / 24V DC
Available in 3 different colours
Red, white & blue

Illuminated Colour Options





CANM8-PARKONE

12V out when vehicle between 0 – 6mph

The CANM8-PARKONE is an ideal solution for people who are fitting parking sensors to the front of a vehicle and don't wish to use the brakes or a switch to activate the front sensors. Ideal for use when installing parking sensors to the front of a 12V vehicle.

24V version also available



CANM8-PARK1-R

12V out when Reverse Gear is selected

The CANM8-PARK1-R is an ideal solution for people who are fitting parking sensors to the rear of a vehicle and have LED lights or CAN controlled lights which might show an error with the parking sensors connected.

Ideal for use when installing parking sensors to the rear of a 12V vehicle.



CANM8-SCAN

CAN Bus Interface

The CANM8 CANNNECT CAMSCAN interface is the ultimate CAN Bus interface for the control of external safety cameras and side scan systems on vehicles which feature CAN Bus wiring. Speed 12V (1A max) when the vehicle speed is 0 - 15 MPH. Reverse 12V (1A max) when reverse gear is selected. Left Indicator Continuous 12V (1A max) when the left indicator is active and the vehicle speed is 0 - 15 MPH. Right Indicator Continuous 12V (1A max) when the right indicator is active and the vehicle speed is 0 - 15 MPH.

10 Control Units



AVSMMOD1

Indicator Module

Indicator Control Unit
Dual voltage: 12V / 24V DC
Potted to withstand vibration
Solid state electronics
Fully waterproof
Universal – fits all known applications
Compact – easily fits under dashboard



AVSPLIMO1

Speed Sensing Device

Speed sensing device designed to turn off side scan, front sensors or side alarms above a predefined speed.
Dual voltage: 12V / 24V DC
Waterproof and dustproof
Multi-setting speeds available
Compatible with most quality manufactured products



AVRRS6

Timed Cut Off Switch

Six-minute timer cut-out
Auto reset
Dual voltage: 12V / 24V DC
IP67 rated - sealed against mud, water and vibration
30(H) x 88(W) x 47(D)
Can be used with any alarm



AVSPC12

12V Heavy Duty Split Charger - 200A

Designed for equipment powered from auxiliary batteries cannot drain the starting battery.
Rating amps: 200 A
Size: 120 x 80 x 70
Studs size: M8
Quiescent current: 1 mA
Switching voltages: 13.4V - 12.5V
24 Volt version also available



AVSPC400

Heavy Duty Charge Guard

The 400-amp version can cope with virtually all split charging requirements.
It is ideally suited for vehicles such as breakdown vehicles where there is a high requirement for power to run tyre changing machinery.
The relay is a double latching relay which draws zero current in either mode.



SCAM-SPACER

Allows Side Cameras to be Mounted Further Out

Product may need to be adapted for use with all cameras
25mm deep



CA-COVER

Camera Cover for Front Facing Cameras

Mounts onto windscreen to prevent driver interference



C-KO-BRACKET

Monitor Bracket

Self-adhesive pad attached to base



CKO-589-DM

Monitor Bracket

Quick release bracket to remove monitor
Self-adhesive pad attached to base



C-KO-DM-03

Monitor Bracket

Self-adhesive pad attached to base

10 Cables & Accessories



CAB-SV-MTR-4PIN

4 Pin Aviation Screw Cables

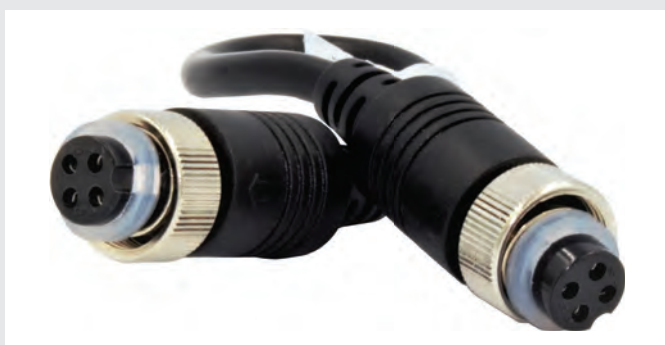
Available in 1, 3, 5, 7.5, 10, 15, 20 & 25 Metre
Male to female 4 Pin extensions



TOT-MON/DVR

Adaptor Cable for DVR / Monitor

Female 4 Pin aviation connection to RCA and power



TOT-MON/DVR-2

Female to Female 4 Pin

Power not terminated



TOT-CAM-1

Camera Adaptor Cable

Male 4 Pin to Phono male video and Phono male audio
Unterminated bare end for live and earth



CAB-4SCR-SPLITTER

1 x Male to 2 x Female 4 Pin Splitter



GO-CONV-LEAD

4 Pin Aviation to S-Video



CAB-VGA-5M

VGA Lead for DVR

Lead for connecting DVR to a VGA monitor



TOT-MON/DVR-3

Adaptor Cable with BNC

Female 4 Pin aviation to BNC for video, RCA for audio and female power



TOT-HSDM-4PIN

Male HSD Water Blue to 4 Pin Connection
Power, Video & Ground as standard



TOT-HSD-4PIN

Female HSD Water Blue to 4 Pin Connection
Power, Video & Ground as standard

10 Cables & Accessories



TOT-CAM-2
4 Pin Aviation to Video Phono and DC Socket



TOT-CAM-3
4 Pin Aviation to Fakra Water Blue video, Audio Phono and DC Socket



TOT-CAM-4
4 Pin Aviation to Video Phono and Bare Ends



TOT-CAM-5
4 Pin Aviation to Video & Audio Phono and DC Socket



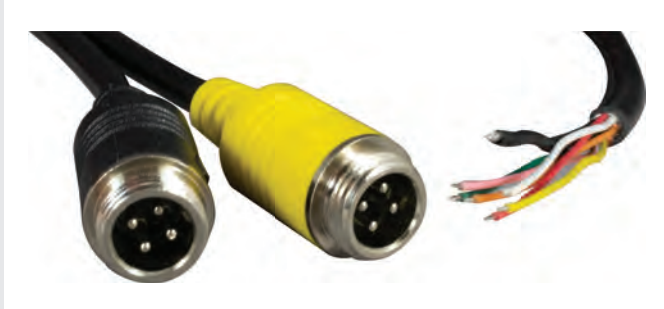
TOT-CAM-6
4 Pin Aviation to Video Phono and Bare Ends



TOT-CAM-7
4 Pin Aviation to Video Phono and DC Plug



TOT-BARE-MALE
Bare End Male Aviation



TOT-BARE-MALE-2
Bare End Male Aviation x 2



TOT-BARE-FEMALE
Bare End Female Aviation



TOT-BARE-FEMALE-2
Bare End Female Aviation x 2

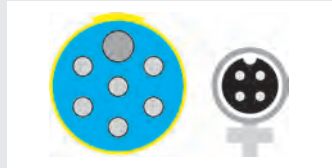


TOT-DC25
Bare End Power Lead

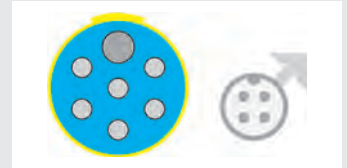
10 Tractor & Trailer Cables



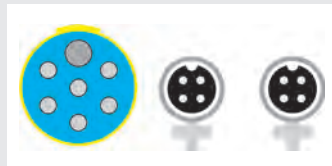
CAV-TRACTOR-1-V
Socket for Single Camera
Female 4 Pin



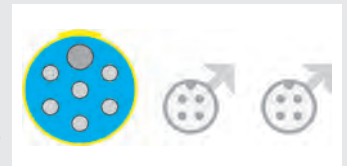
CAV-TRAILER-1-V
Socket for One Camera
Male 4 Pin



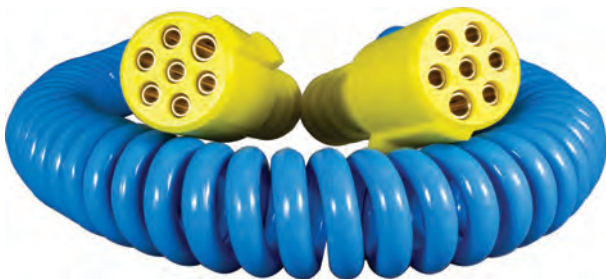
CAV-TRACTOR-2-V
Socket for Two Cameras
Female 4 Pin x 2



CAV-TRAILER-2-V
Socket for Two Cameras
Male 4 Pin x 2



Custom versions can be manufactured, usual lead time 4-6 weeks.



CAV20-40
Blue Coil
Yellow 24N Connectors
Compatible with blue label sockets
4 Metre 7 Core



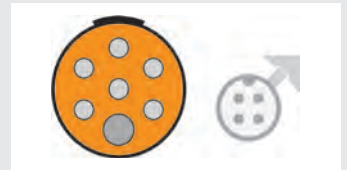
CAV20-20
Straight Mount for Sockets
Supplied with nuts & bolts



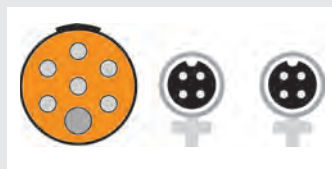
CAV-TRACTOR-1
Socket for Single Camera
Female 4 Pin



CAV-TRAILER-1
Socket for One Camera
Male 4 Pin



CAV-TRACTOR-2
Socket for Two Cameras
Female 4 Pin x 2



CAV-TRAILER-2
Socket for Two Cameras
Male 4 Pin x 2



CAV20-01
Orange with Inverted 24N Connectors
Inverted large pin to avoid incorrect connection of camera system to other equipment
Compatible with orange label sockets
4 Metre 7 Core

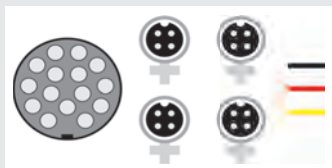


CAV20-10
Right Angle Mount for Sockets
Supplied with nuts & bolts

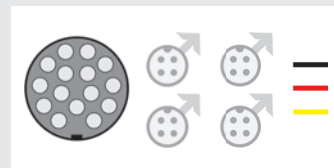
10 Cables & Accessories



CA-SUZI-CAM-4
Tractor Socket for 4 Cameras
 15 Pin connectors
 4 x Female aviation leads
 3 x Bare ended cables



CA-SUZI-MON-4
Trailer Socket for 4 Cameras
 15 Pin connectors
 4 x Male aviation leads
 3 x Bare ended cables



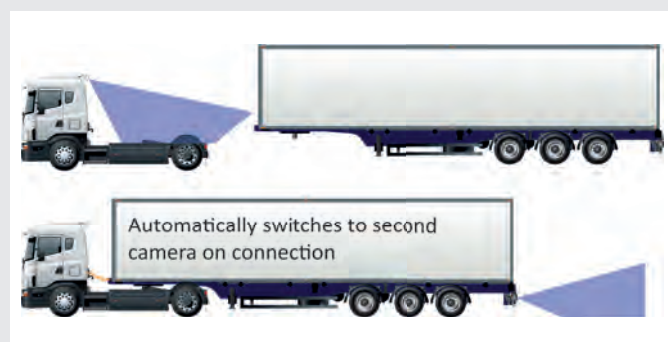
CA-SUZI-COIL-15PIN
4 Metre 15 Core Electrical Coil



CAB-4PIN-12/24
24 Volt to 12 Volt Dropper
 4 Pin aviation connection



CA-SW-I-4PIN
Automatically Detects and Switches when Suzi Connected
 Compatible with D1, AHD & 1080p cameras
 2 Camera input - 1 Video output
 4 Pin aviation connection
 12V DC - Dimensions: 111mm x 63mm x 31mm



Camera System
 4 Pin Intelligent Switcher
 Automatically detects connection of second camera.
 Ideal for increasing artic safety with an additional camera on the rear of the tractor.
 Use with CKO suzi cables and connectors.
 Additional 4 Pin cables of various lengths available.



SD Card

See Price List for P/N

Available in various memory capacity, part number signifies capacity
Class 10



TF Card

See Price List for P/N

Available in various memory capacity, part number signifies capacity
Class 10
PRO version also available



2.5" Hard Disc Drive

See Price List for P/N

2-year manufacturer warranty
Available in 1TB or 2TB capacity
7mm - SATA III-6Gb/s
5400rpm
128MB Cache



2.5" Solid State Drive

See Price List for P/N

Solid state drive
5-year manufacturer warranty
Available in 250MB, 500MB, 1TB & 2TB capacity
7mm
SATA III-6Gb/s



CT-TRAY

Spare DVR caddy

Supplied without media installed
Please note that DVR needs to format new media to allow recording to begin
USB 2.0 Type B connection on rear



CT-MIC

Discrete Microphone for Audio Recording

Requires 12V DC

10 DVR Accessories



DVR-A1-ANT

External Multipurpose Antenna

4G, 3G, Wi-Fi and GPS
 3M adhesive and fastened by three self-tapping screws
 120mm diameter
 3metre lead
 SMA Male connection



DVR-3G/4G-ANT

External 3G / 4G
 Antenna
 SMA Male
 connection



CT-SOS

SOS Button and IR / LED Status Light Extension

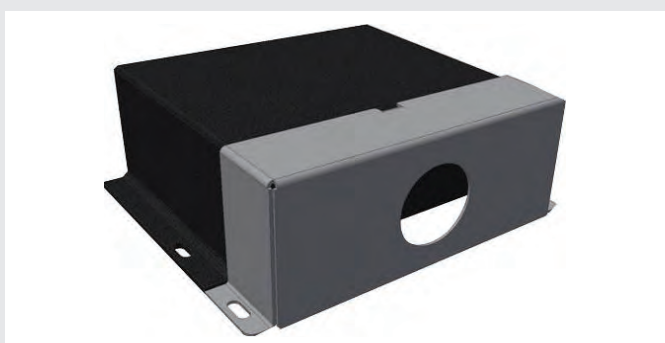
Push to make switch
 When pressed alerts operator of an event



CT-SWITCH

Illuminated Incident Switch

Push to make switch
 When pressed alerts operator of an event
 Dimly illuminated to show DVR has power
 Includes label - 22mm hole diameter
 12V DC



CT-CASE

Cable Tampering Preventer

Prevents drivers removing cables from the rear of the DVR



CT-REMOTE

Spare Remote Control for DVR

Supplied with battery
 Additional batteries also available

CT-USB-LEAD

Connection from CT-Tray to PC
 USB 2.0 Type A to Type B





CPC-CN16000
Female to Male



CPC-CN00545
Male to Male



PSG02786
Male to Female



PSG01881
Female to Female



CPC-CN05261
Male to Male



CPC-CN04147



HDMI-M
HDMI Cables
Available in 1, 3, 5 & 10 Metres

10 Cables & Accessories



RCA-VIDEO-M

Video Cables

Male to Male Phono

Available in 1.2, 3, 5, 10 & 20 Metres



RCA-M

Audio & Video Cables

Male to Male Phono

Available in 1.2, 3, 5, 10 & 20 Metres



CPC-AV02488

3.5mm Conversion to Phono



CPC-AV00999

3.5mm Conversion to Phono



MAD-PX070

Phono Y-Lead

1 x Female to 2 x Male



MAD-PX071

Phono Y-Lead

1 x Male to 2 x Female



SW-ROC
Rocker Switch



SW-ROC-#
Rocker Switch with Status LED
Available in blue, green, amber & red



SW-LED
Illuminated 12V DC
Push to make

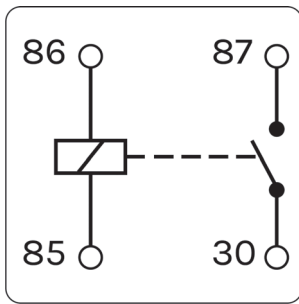


DP1
Door Switch
Circuit open when door closed



SH6
Momentary Switch

10 Relays

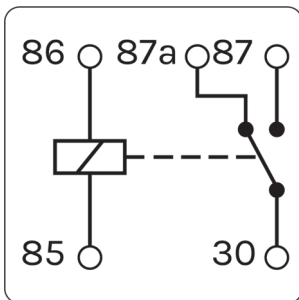


MNR4-12 / MNR4-24

Make & Break Relay

4 Pin

12V DC or 24V DC

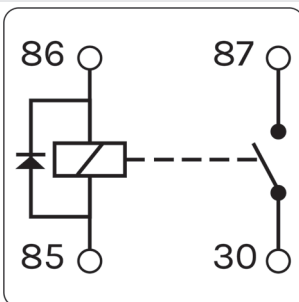


MNR5-12 / MNR5-24

Changeover Relay

5 Pin

12V DC or 24V DC

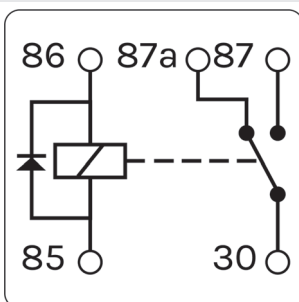


MNR4-12D

Make & Break Relay with Diode

4 Pin

12V DC



MNR5-12D

Changeover Relay with Diode

5 Pin

12V DC



RY100

Relay Holder with Connections



12 Volt Pure Sine Wave Inverters



12 Volt Pure Sine Wave Inverters

Pure Sine Wave Inverters. Replicates true shore power, suitable for all appliances.

Twin socket adjustable between centre tapped earth and neutral earth bonding. USB charger. Adjustable between Neutral Earth Bonding and Centre Tapping. No DC cables supplied.

Model	Remote	Weight Kg	Size L x W x D mm	Cables	Part Number
12V 200W Twin Sockets	Optional Extra	1.4	210 x 190 x 85	1m Cigg Plug	SIB12200
12V 300W Twin Sockets	Optional Extra	1.4	210 x 190 x 85	1m DC 8mm ring	SIB12300
12V 600W Twin Sockets	Optional Extra	2.2	250 x 190 x 85	1m DC 8mm ring	SIB12600
12V 1000W Twin Sockets	Optional Extra	2	300 x 190 x 85	8mm connection	SIB121000
12V 1600W Twin Sockets	Optional Extra	3.6	300 x 190 x 85	8mm connection	SIB121600



24 Volt Pure Sine Wave Inverters



24 Volt Pure Sine Wave Inverters

Pure Sine Wave Inverters. Replicates true shore power, suitable for all appliances.

Twin socket adjustable between centre tapped earth and neutral earth bonding. USB charger. Adjustable between Neutral Earth Bonding and Centre Tapping. No DC cables supplied.

Model	Remote	Weight Kg	Size L x W x D mm	Cables	Part Number
24V 200W Twin Sockets	Optional Extra	1.4	210 x 190 x 85	1m cig Plug	SIB24200
24V 300W Twin Sockets	Optional Extra	1.4	210 x 190 x 85	1m DC 8mm ring	SIB24300
24V 600W Twin Sockets	Optional Extra	2.2	250 x 190 x 85	1m DC 8mm ring	SIB24600
24V 1000W Twin Sockets	Optional Extra	2	300 x 190 x 85	1m DC 8mm ring	SIB241000
24V 1600W Twin Sockets	Optional Extra	3.6	300 x 190 x 85	8mm connection	SIB241600



SIB-SWR

Remote Control and Display Panel

10 Metres of cable

12 Automotive Cable

Automotive Cable

Cores manufactured to ISO 6722-1:2011 (Class B) 105°C

Plain Copper Conductors to BS EN 60228:2005 - PVC Insulated

Single core suitable for use at temperatures from -40°C to 105°C with excursions up to 120°C

Twins and multicores PVC sheathed at 70°C

Suitable for 12V and 24V systems (Maximum voltage 60V)

Reduced insulation gives considerable savings in weight and volume especially when used in large wiring harnesses

Good resistance to petrol, diesel, lubricating oils and diluted acids PVC insulation offers good resistance to abrasion and cut through.



Single Core



Flat Twin Core



Twin Core



Three Core



Five Core



Seven Core

Part No	*Conductor Specification (mm)	Conductor Cross Section (mm ²)	Maximum Overall Diameter (mm)	Nominal Current Rating (Amps)**
TW.5	16/0.20	0.5	1.6	11
TW.75	24/0.20	0.75	1.75	14
TW1.0	32/0.20	1	1.95	16.5
TW1.5	21/0.30	1.5	2.3	21

Available in:

Black, Red, Yellow, Blue, Pink, Orange, Grey, Green, Brown

Reel size (metres): 50, 100

TW02/06	2 x 16/0.20	2 x 0.5	2.7 x 4.6	11
TW02/04	2 x 24/0.20	2 x 0.75	3.1 x 4.9	14
TW02/01	2 x 32/0.20	2 x 1.0	3.0 x 5.0	16.5

Reel size (metres): 30, 100

TW02/21	2 x 16/0.20	2 x 0.5	5.2	11
TW02/22	2 x 24/0.20	2 x 0.75	5.3	14
TW02/03	2 x 32/0.20	2 x 1.0	5	16.5

Reel size (metres): 30, 100

TW03/03	3 x 24/0.20	3 x 0.75	5.7	14
TW03/01	3 x 32/0.20	3 x 1.0	5.5	16.5

Reel size (metres): 30, 100

TW05/02	5 x 24/0.20	5 x 0.75	6.3	14
TW05/01	5 x 32/0.20	5 x 1.0	6.3	16.5

Reel size (metres): 30, 100

TW07/03	7 x 16/0.20	7 x 0.5	6	11
TW07/01	7 x 24/0.20	7 x 0.75	6.8	14
TW07/04	7 x 32/0.20	7 x 1.0	7.4	16.5

Reel size (metres): 30, 100

*The conductor specifications shown are representative configurations, actual cable strand may differ slightly, but will meet resistance values shown. **Nominal current amperage ratings are provided as a guide only and can vary depending on application, conditions and environmental factors. If in doubt, please consult a qualified electrician.



Standard Fuse

Packs of 25

FUSE-2.0A
FUSE-3.0A
FUSE-5.0A
FUSE-7.5A
FUSE-10.0A
FUSE-15.0A
FUSE-20.0A

Mini Fuse

Packs of 25

FUSE-MINI-2.0A
FUSE-MINI-3.0A
FUSE-MINI-5.0A
FUSE-MINI-7.5A
FUSE-MINI-10.0A
FUSE-MINI-15.0A



FUSEHOLDER-FU8-A / FUSEHOLDER-FU8-B

Used for Standard Blade Fuses

Suitable for clipping together or fixing using a mounting plate
Voltage rating: 32V DC
Current rating 20A



Splash Proof Fuse

FH-205 - 5 Amp FH-220 - 20 Amp
FH-210 - 10 Amp FH-230 - 30 Amp



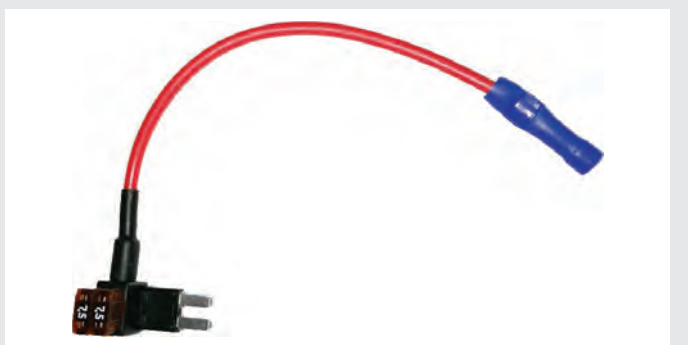
K-69680

Piggy Back Fuse Holder
For mini blade fuses



K-69681

Piggy Back Fuse Holder
For standard blade fuses



K-69682

Mini Blade Fuse Holder

12 Consumables



K-69666
Female Cigarette Socket Unfused
1.5M



K-69671
Female Cigarette Socket Fused with 5Amp



K-69677
Female Cigarette Socket Unfused
0.2M



SSMF
5 Way Female SuperSeal Connectors
Provides waterproof connection to IP67
Suitable for 0.5-1.5mm²
Each pack contains enough terminals and seals



SS5M
5 Way Male SuperSeal Connectors
Provides waterproof connection to IP67
Suitable for 0.5-1.5mm²
Each pack contains enough terminals and seals



Female Spade



Insulated Female Spade

Female Spade

WT5 – 6.3mm Blue

Female Spade Fully Insulated

WT8 – 2.8mm Red

WT9 – 4.8mm Red

WT10 – 6.3mm Red

WT11 – 4.8mm Blue

WT12 – 6.3mm Blue

WT13 – 6.3mm Yellow



Butt



Fork

Butt

WT16 – 4mm Blue

Fork

WT24 – 3.7mm Red

WT25 – 4.3mm Red

WT26 – 5.3mm Red

WT79 – 6.4mm Red

WT27 – 3.7mm Blue

WT28 – 4.3mm Blue

WT29 – 5.3mm Blue

WT30 – 6.4mm Blue

WT33 – 5.3mm Yellow

WT34 – 6.4mm Yellow

All Terminals conform to:
BS4579 BS4G178

Red
Blue
Yellow
Crimp Terminals
Packs of 100



Ring

Ring

WT35 – 3.2mm Red

WT36 – 3.7mm Red

WT37 – 4.3mm Red

WT38 – 5.3mm Red

WT41 – 3.2mm Blue

WT42 – 3.7mm Blue

WT43 – 4.3mm Blue

WT44 – 5.3mm Blue

WT45 – 6.4mm Blue

WT29 – 5.3mm Blue

WT30 – 6.4mm Blue

WT33 – 5.3mm Yellow

WT34 – 6.4mm Yellow



Piggy Back



Male Tab

Piggy Back

WT55 – 6.3mm Red

WT56 – 6.3mm Blue

WT57 – 6.3mm Yellow

Male Tab

WT58 – 6.3mm Red

WT59 – 6.3mm Blue

WT60 – 6.3mm Yellow



Bullet



Receptacle for Bullet

Bullet

WT63 – 4.0mm Red

WT64 – 5.0mm Blue

WT65 – 5.0mm Yellow

Receptacle for Bullet

WT66 – 4.0mm Red

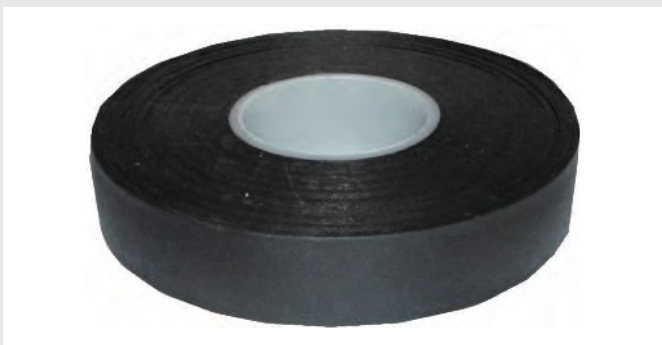
WT67 – 5.0mm Blue

WT68 – 5.0mm Yellow

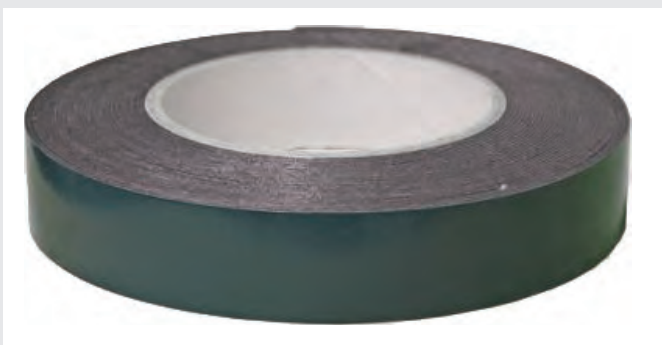
12 Consumables



TAPE-T1-N
PVC Electrical Tape 8 Pack
Black
19mm x 20M



TAPE-T9
Self-Amalgamating Tape
19mm x 20M



TAPE-T27
Double Sided Tape
50mm x 10M



TAPE-T29
Cloth Tape
Woven Cloth Tape
19mm x 25M



Cable Ties

TIES-TR1	Nylon Cable Ties x 100 - 100mm x 2.5mm
TIES-TR2	Nylon Cable Ties x 100 - 150mm x 3.6mm
TIES-TR3	Nylon Cable Ties x 100 - 160mm x 4.8mm
TIES-TR4	Nylon Cable Ties x 100 - 200mm x 2.5mm
TIES-TR7	Nylon Cable Ties x 100 - 300mm x 3.6mm
TIES-TR8	Nylon Cable Ties x 100 - 300mm x 4.8mm
TIES-TR10	Nylon Cable Ties x 100 - 370mm x 4.8mm
TIES-TR12	Nylon Cable Ties x 100 - 430mm x 4.8mm



Split Conduit

CONDUIT-SCON1	6.5mm - 10.0mm x 25M
CONDUIT-SCON2	10.1mm - 13.0mm x 25M
CONDUIT-SCON3	11.8mm - 16.0mm x 25M
CONDUIT-SCON5	16.9mm - 21.2mm x 25M
SCT4.5-100	4.5mm - 7.2mm x 100M
SCT9-100	9.0mm - 13.3mm x 100M
SCT11-100	11.0mm - 16.4mm x 100M



TL-SCTOPEN / TL-SCTOPEN-LARGE

Small - Split Convuluted Tubing Opener 6.5mm - 14.5mm
 Large - Split Convuluted Tubing Opener 16.9mm - 23.1mm

12 Consumables



STH

Hex Head Self Drilling Screws

STH4 Hex Head Self Drilling Screws 10 x 1/2"
(Zinc plated) 8mm Head

STH6 Hex Head Self Drilling Screws 10 x 1"
(Zinc plated) 8mm Head

STH1 Hex Head Self Drilling Screws 8 x 1/2"
(Zinc plated) 7mm Head



SF6

Speed Fastener U Type 8 (100)

Measures approximately 16 x 11mm, and ideally suited to a number 8 screw.



SSPC

Stainless Steel Rubber Lined P-Clip

SSPC16 - 16mm x 25

SSPC21 - 21mm x 25

SSPC25 - 25mm x 25



PC10-B

Nylon P-Clip

PC-102-B 6.0mm - Black x 100

PC-105-B 12.0mm - Black x 100

PC-107-B 19.0mm - Black x 100



Heat Shrink

3:1 Ratio

Ideal for sealing 4 Pin aviation connections



AT24

800 Assorted Self Tappers

Pan Head Pozidrive 6-12 gauge (Type AB)

Contents (8 Sizes)

- 100 x ST3 (6 x 1/2)
- 100 x ST4 (6 x 3/4)
- 100 x ST6 (8 x 1/2)
- 100 x ST7 (8 x 3/4)
- 100 x ST8 (8 x 1)
- 100 x ST9 (10 x 1/2)
- 100 x ST10 (10 x 3/4)
- 100 x ST13 (12 x 3/4)



AT38

Assorted Stainless Steel Self Tappers (450)

+Pozi Pan. DIN7981 Grade 2 (Type AB)

Contents (9 Sizes)

- 6 x 1/2
- 6 x 3/4
- 6 x 1"
- 8 x 1/2
- 8 x 3/4
- 8 x 1"
- 10 x 1/2
- 10 x 3/4
- 10 x 1"



AT71

700 Assorted Self Tappers

Black Flanged (6-10 Gauge)

Contents (7 Sizes)

- 100 x ST16 (6x1/2)
- 100 x ST17 (6x3/4)
- 100 x ST18 (6x1)
- 100 x ST19 (8x1/2)
- 100 x ST20 (8x3/4)
- 100 x ST22 (10x1/2)
- 100 x ST23 (10x3/4)



AT163

Assorted Pan Head

Self-drilling Self-tappers (Pozi)

Qty 1200

12 Consumables



AT110
200 Assorted Micro Fuses
3-30 Amp



AT130
Assorted Box of 3:1 Heat Shrink
Mixed Adhesive Lined
UL approved. UL 224 VW-1.
Contains: 225 pieces 3mm - 18mm



GRO-MG
Mixed Blanking Grommets
Assorted box of blanking grommets 6 - 25mm
25mm x 30pcs
20mm x 50pcs
16mm x 50pcs
12mm x 50pcs
9mm x 50pcs
6mm x 50pcs



GRO-WG
Mixed Wiring Grommets
Assorted box of wiring grommets 6 - 25mm
25mm x 30pcs
20mm x 50pcs
16mm x 50pcs
12mm x 50pcs
9mm x 50pcs
6mm x 50pcs



JAN11

Paper Wipes

2-ply
190mm x 150M
Blue



LS1

Superglue (20g)

Bonds Metals, Plastics, Wood, Ceramics, Leather, Rubber, Card, Glass and many other materials



LOCAA319-0.5

Rear View Mirror Bonder

0.5ml
Suitable for glass and metal only



LS5

Epoxy Resin Double Syringe (25ml)

General purpose
Epoxy Resin
Twin Mix Syringe
Cures in 5 minutes (depending on ambient temperature)



LS184

Label Remover, Aerosol/Spray (400ml)

With long straw attached to can
Penetrate rapidly
Hydrocarbon cleaner
Safe on most plastics
Safely remove adhesive residue
400ml



LS195

High Performance Rust Preventative Wax Oil

A superb blend of oils, waxes, corrosion inhibitors and dewatering agents that in turn combine to form a heavy-duty rust preventative
500ml Aerosol Clear



LS28

Brake Cleaner (400ml)

With short straw attached to nozzle.
Removes brake dust, oil and grease
Protects against rust and corrosion
Apply without dismantling parts
Helps prevent brake squeal
Leaves no residue

13 Tools



TL-CRIMPER
Crimper



TL-WIRECUTTER
Wire Cutter



TL-SCUTTER
Step Cone Cutter
MCC-10 - 4-12mm
MCC-11 - 4-20mm
MCC-12 - 6-30mm



TL-HEX-2.0MM
Hex Driver 2.0mm
Ideal for use with side camera screws



TL-BOX
Tool Box



SOL8
Soldering Iron
Gas Powered Soldering Iron



SOLDER-0.8MM / SOLDER-1.2MM
SOLDER-0.8MM / SOLDER-1.2MM



LS6
Butane Gas (400ml)
High quality butane
Suitable for refillable soldering irons, Blow lamps and
cigarette lighters
400ml



SOLDERTIP-4



SOLDERTIP-8



SOLDERTIP-1



SOLDERTIP-5



SOLDERTIP-9



SOLDERTIP-2



SOLDERTIP-6



SOLDERTIP-10



SOLDERTIP-3



SOLDERTIP-7



SOLDERTIP-11

14 Cash Box



CASHBOX-F

Drivers Cash Box Anti Dipper

High Impact ABS with Mild Steel support to make for a light weight yet very strong drivers cash box with 2 mild steel fixing points that will fit most standard hooks or can be utilised with our mounting plate. 4 Compartment



CASHBOX-D

Drivers Cash Box Drivers Choice

High Impact ABS with Mild Steel support to make for a light weight yet very strong drivers cash box with 2 mild steel fixing points that will fit most standard hooks or can be utilised with our mounting plate. 5 Compartment



CASHBOX-E

Drivers Choice, Bus Drivers Cash Box Anti Dipper Bucket

High Impact ABS with Mild Steel support to make for a light weight yet very strong drivers cash box with 2 mild steel fixing points that will fit most standard hooks or can be utilised with our mounting plate. 4 Compartment



CASHBOX-MOUNT

Cash Box Mounting Plate

Heavy duty drivers Cash Box mounting plate, easy fix mounting.



CASHTRAY-DOUBLE

Bus Change Tray

Door mounted change tray
Single version also available



NAMETAG-1

Depot Name Tag Holder

BR Cat Number: B3-A2-8700057
Name Tag Holder Polycarbonate Tube & PE End Plug

Contacts



Managing Director

Eddie Collins

eddie.collins@c-ko.co.uk



Technical Director

Errol Williams

errol.williams@c-ko.co.uk

07730 661774

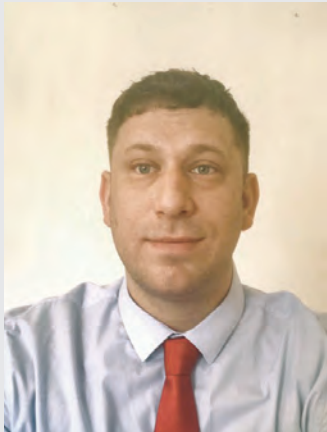


Sales & Marketing Director

Nick Turner

nick.turner@c-ko.co.uk

07850 793653



National Sales Representative

Tom Clarke

tom.clarke@c-ko.co.uk

07751 726598



Technical Support

Martin Harniman

martin.harniman@c-ko.co.uk

07860 496517



Logistics Lead

Jake Perry

jake.perry@c-ko.co.uk



Sales Support

Mary McLoughlin

mary.mcloughlin@c-ko.co.uk



Accounts

Angela Blue

angela.blue@c-ko.co.uk



Accounts

Tracy Kilgannon

tracy.kilgannon@c-ko.co.uk



INTERNATIONAL LTD

Safety Products For
HGV VANS CARS BUS MOBILE HOMES
All products have a Two Year Warranty



CKO International Limited
14 The Hawthorn Centre
Elmgrove Road
Harrow
Middlesex
HA1 2RF

020 8863 8333 • www.c-ko.co.uk • sales@c-ko.co.uk

