

The logo for CKO, featuring a white 'C', a black 'K', and a white 'O' with a yellow chevron pointing left inside it.

# CKO

THE VEHICLE SAFETY EXPERTS

The text 'PRODUCTS CATALOGUE' in white, bold, uppercase letters, positioned above a large yellow and black chevron graphic pointing right.

**PRODUCTS  
CATALOGUE**

Issue 4.0

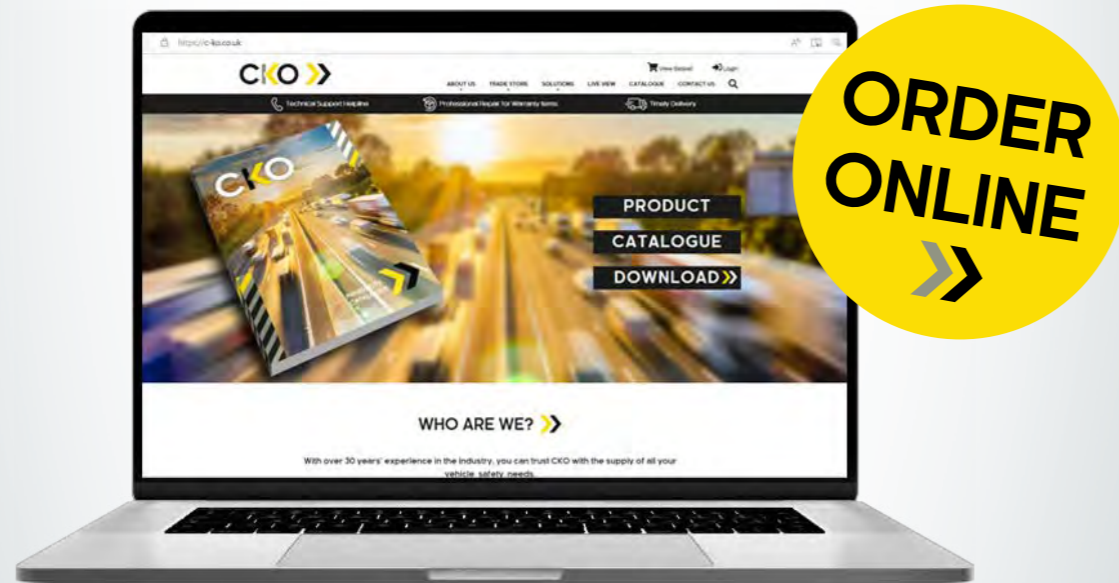
# WELCOME >>

## The Vehicle Safety Experts

CKO have been involved in the design, development, and distribution of vehicle safety products and solutions for over 40 years. We work directly with established manufacturers in the UK, Europe, and Far East to meet the safety and leisure requirements of our customers in the commercial vehicle and automotive industries. CKO hold an extensive range of products in stock; with competitive lead times to meet specific customer requirements.

### HAVE CONFIDENCE IN YOUR PURCHASE

Our experienced sales team are on hand to offer you tailored support to meet your needs, and the requirements of your customers. With extensive knowledge regarding DVS and FORS standards, as well as other forms of compliance, CKO always demonstrate clear capability when it comes to facilitating your regulatory standard queries. Our dedicated technical helpline offers long-term support for our products, with a professional repair service for warranty items. We offer high-quality products, value for money, and great service. Customer satisfaction is at the core of our business.



Visit our website at [www.c-ko.co.uk](http://www.c-ko.co.uk)

#### Address

CKO Vehicle Safety Experts,  
6 Lumsdale Road, Cobra Court,  
Trafford Park, Manchester,  
M32 0UT

#### Phone

Sales: 020 8863 8333 (Opt 1)  
Accounts: 020 8863 8333 (Opt 2)  
Technical: 020 8863 8333 (Opt 3)

#### Email

[sales@c-ko.co.uk](mailto:sales@c-ko.co.uk)  
[accountsreceivable@c-ko.co.uk](mailto:accountsreceivable@c-ko.co.uk)  
[accountspayable@c-ko.co.uk](mailto:accountspayable@c-ko.co.uk)

# CONTENTS >>

## Category 1 - Introduction

About Us	3
Warranty T&Cs	4
Case Study	5
Compliance	7
Live View Software	9
Datalive Software	13

## Category 2 - DVR

Digital Video Recording	15
DVR Packages	18
DVR Accessories	21

## Category 3 - Compliance Packages

DVS Package	24
360° Package	27

## Category 4 - Dash Cameras

Dash Cameras	29
--------------	----

## Category 5 - Cameras

AHD Cameras	32
FORS Packages	40
Brake Light Cameras	41
Van Package	49
Number Plate Cameras	50
D1 Cameras	51

## Category 6 - Monitors

Monitors	57
Monitor/Camera Kits	61
Mirror Monitors	63
Motorhome Package	68

## Category 7 - Sensors

Proximity Sensors	69
Parking Sensors	71

## Category 8 - Alarms & Lighting

Warning Alarms	73
----------------	----

## Category 9 - Heated Seats

Heated Seats	77
--------------	----

## Category 10 - Accessories

Control Units	79
Brackets	81
Cables	83
Suzi Kit Cables	88

## Category 11 - Consumables

Consumables	95
-------------	----

## Category 12 - Tools

Tools	100
-------	-----

## Category 13 - Cash Boxes

Cash Boxes	104
------------	-----

## Category 14 - Alcolock

Alcolock	106
----------	-----

## Category 15 - Our Team

Installation	109
Meet The Team	110

# ABOUT US >>

## VEHICLE SAFETY EXPERTS

For over 40 years, CKO have provided tailored innovative products and solutions to a variety of different industries; from Tier 1 OEMs to vehicle builders and distributors.

This accumulation of extensive expertise has enabled CKO to not only supply products, but to also design, develop and manufacture bespoke products, built to exceed our client's specifications. If your vehicles have complicated requirements, sought unique features, or have a difficult installation location, an off the shelf product may not be good enough. Our team works closely with clients to produce a solution that can be delivered on time and within budget.

CKO are often called upon by distributors and resellers alike to provide a wide range of cameras, monitors, DVRs, cable assemblies, bracketry, and software; all of which offer impressive functionality to solve customers' vehicle safety needs.

These products individually contribute when it comes to significantly reducing the likelihood of an incident, and therefore reducing the need for time-consuming (and costly) repairs. When combined, these products produce a complete system; allowing you to clearly observe the rear, front, and sides of your vehicle when reversing and manoeuvring.



## AFFILIATED WITH



## OUR SERVICE SUMMARY FOR BESPOKE PRODUCTS



## TECHNICAL KNOW-HOW AND WARRANTY RETURNS

Buying from CKO brings you the additional reassurance of our in-house technical team. We thoroughly evaluate and test all our products before they go to market. This, together with our technical helpline, allows us to provide a full backup service to our customers who can have the confidence in our long-term support and warranty responsibilities.

## WARRANTY TERMS AND CONDITIONS

CKO warrants all goods to be free from defect in material and workmanship in normal use, provided that they have been installed and operated in accordance with the instructions supplied. The start date of all warranties is the date of delivery to the purchaser, unless otherwise agreed in writing by CKO. The period during which the 12 or 24-month applies is stated above. CKO make no other warranty, express or implied, with respect to the goods, their marketability, quality, or fitness for any particular use or purpose. In particular, but without prejudice to the general provisions of the conditions of sale, no responsibility is assumed for incidental or consequential loss by reason of any warranty express or implied.

Full details of CKO's Terms and Conditions are contained on our website at [www.c-ko.co.uk](http://www.c-ko.co.uk). CKO International Limited reserves the right to change terms, conditions, and specifications shown in this catalogue at any time. All Information within this catalogue was correct at time of going to print.

# CASE STUDY >>



CASE STUDY

PANELTEX

AND OCADO

## >> Case Study Rear Camera and Mirror Monitor Reversing Solution

Established in 1991, Paneltex is a commercial, specialised and refrigerated vehicle bodybuilder

### Summary

CKO were delighted to have been selected by Paneltex to supply a cutting-edge reversing safety solution for their customer's fleet of 100 vans. Established in 1991, Paneltex is a renowned market-leading specialised and refrigerated vehicle bodybuilder. This selection stems from the longstanding and trusted relationship between the two companies. With over 30 years' experience in the industry, CKO is well-aligned with the high standards set by Paneltex. This collaboration underscores the mutual commitment to excellence and vehicle safety.



### Challenges

Ocado, pioneers of the online grocery market and a valued customer of Paneltex, reached out with a pressing need for a solution that enhances the safety of their vans during manoeuvring and reversing. Thus, the solution would directly contribute to the overall safety of pedestrians, cyclists, and other vehicles in the surrounding environment, minimising the risk of accidents and collisions. A robust vehicle safety solution during reversing not only safeguards the well-being of individuals but also protects valuable assets and minimises potential damage to the vehicles involved.



## >> Case Study

### Rear Camera and Mirror Monitor Reversing Solution



### Solution

After engaging in multiple discussions regarding the requirements of Ocado, CKO were pleased to present a comprehensive solution tailored to address their specific needs. The proposed solution encompassed a cutting-edge 7" HD Mirror Monitor, seamlessly integrated with a vehicle-specific stalk, and a robust HD commercial camera equipped with advanced features (such as night vision capability and audio functionality). This meticulously crafted HD Camera System stands out as the optimal solution to enhance the safety and precision of Ocado's drivers during manoeuvres.

The innovative aspect of our proposed system lies in the strategically positioned HD commercial camera on the top of the vehicle, oriented to capture footage of the rear of the vehicle. This footage is then seamlessly displayed on the 7" HD Mirror Monitor, providing real-time visual feedback to the driver. To further aid the driver in assessing the proximity between the vehicle and potential obstacles or Vulnerable Road Users (VRUs), an overlay is incorporated. The overlay employs a colour-coded system – green, amber, and red – to provide a quick and intuitive perspective on the distance, enabling the driver to make informed decisions during manoeuvres.

CKO is dedicated to leveraging technology to not only meet but exceed the expectations of our valued customers, and we are confident that this advanced HD Camera System will significantly contribute to the efficiency and safety of Ocado's operations.



# COMPLIANCE >>

## YOUR FLEET COMPLIANCE IN TRUSTED HANDS

With over 40 years' experience, CKO is here to take the trouble out of meeting compliance standards. Thus ensuring that your fleet is safe for operation within the modern commercial vehicle world.

## DVS COMPLIANCE

Transport for London (TfL) have presented changes to the Direct Vision Standard (DVS) that come into effect in October 2024. Operators with vehicles weighing over 12 tonnes need to have a new DVS HGV Safety Permit to be able to operate within and around Greater London. All HGVs need to apply for a permit to avoid facing fines.

CKO have developed a Progressive Safe System (PSS) solution that is compliant with these updated standards; designed for aftermarket application into a wide range of vehicle makes and models. This kit protects vulnerable road users in an approach aligned to European Union and the United Nations Economic Commission for Europe (UNECE), namely R151 for Blind Spot Information System (BSIS) and R159 for Moving Off Information System (MOIS).

Find out more about our kit on pages 25 - 26.

## FORS COMPLIANCE

The Fleet Operator Recognition Scheme (FORS) is a voluntary accreditation scheme that recognises safer, greener, and more efficient fleet operations. FORS Bronze, Silver, and Gold membership provides progressive accreditation, enabling Operators to achieve exemplary levels of best practice. FORS members stand out from the crowd, work to standards above the legal minimum, and have access to a wide range of exclusive benefits that provide a real competitive advantage.

FORS is relevant to commercial operators in the three classes of Trucks (V5), Vans (V2), and Passenger Carrying Vehicles (PCV - V6). Specific measures apply to each class.

Trucks: commercial vehicles over 3.5 tonnes gross vehicle weight

Vans: commercial vehicles of 3.5 tonnes gross vehicle weight or under

PCV's: any vehicle with 8 or more passenger carrying seats

CKO can assist you in meeting all your FORS safety requirements, by offering a range of products and solutions that allow Fleet Operators to measure, monitor, and improve performance.

Find out more about our kit on page 40.



THE VEHICLE SAFETY EXPERTS

# Are you FORS compliant?



## Solutions for safer, greener, and more efficient fleet operations.

With over 40 years' experience designing, developing, and distributing vehicle products and solutions, you can place your trust in CKO. Our knowledgeable team can offer you tailored support to meet your required regulatory standards, ensuring that your fleet is compliant for operation within the modern commercial vehicle world.

As associates of the Fleet Operator Recognition Scheme, CKO can assist you in meeting all your FORS safety requirements by offering a range of solutions for measuring, monitoring, and improving vehicle performance - enabling Operators to achieve exemplary levels of best practice.

Find out how we can help. Contact our team today to discuss our solutions for Bronze, Silver, or Gold FORS compliance.

Call 020 8863 8333 (Option 1)



THE VEHICLE SAFETY EXPERTS

# LIVE VIEW SOFTWARE >>

## INTRODUCTION

Live View is a 4G based service offered by CKO, enabling customers to view individual vehicles and whole fleets with real-time and historical footage. We offer monthly and annual payment terms on a 12-month contract.

### This package includes:

- >> PC software
- >> iOS and Android phone software
- >> Device SIM
- >> Data server
- >> Customised email alerts and notifications
- >> Telephone and remote access support
- >> UK networks



## COMPLETE VISIBILITY FOR FLEET MANAGERS

The Live View system offers secure, multi-network, real-time video-streaming and GPS tracking for your single or multiple vehicle fleet. With our system, any user can view up to 16 separate streams at any one time. With two users, you can double the number of streams to 32.

Using the registration number as the default code and the depot to allocate the group, it is simple to classify a fleet of vehicles and enable separate user permissions to access different sets of information.

Not only does the Live View system support efficiency and control over your fleet, but it also aids in increasing vehicle safety - both for your drivers and the general public.



**LIVE CCTV**



**GEO FENCE**



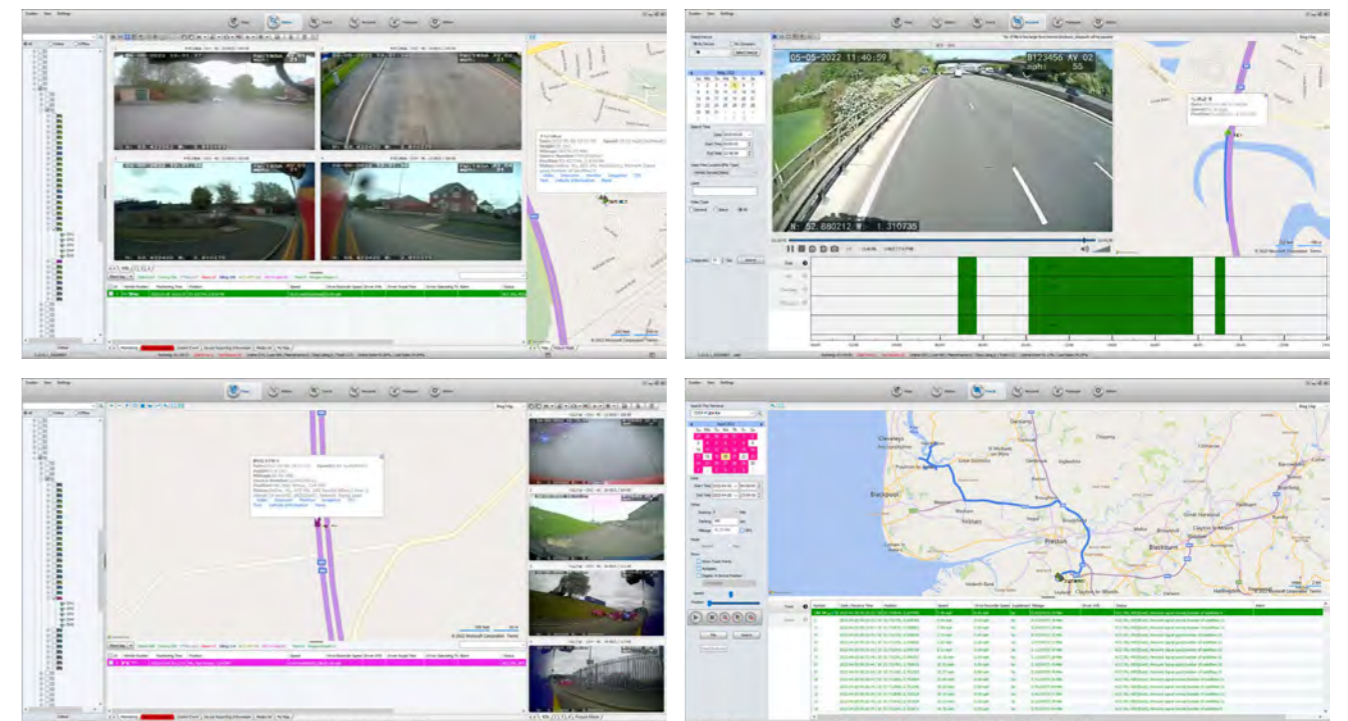
**TRACKING**



## FUNCTIONALITY

### Our system offers market-leading functionality:

- >> Vehicle tracking by GPS – current location and speed of the vehicle can be seen
- >> Alerts regarding faults – such as geo-fencing breaches, failing hardware, switch to SD card recording, and video loss on channel (e.g. faulty camera).
- >> Remote download footage can be viewed through mobile phone or PC
- >> Historical footage – downloadable footage for the last month
- >> Change settings remotely – settings such as camera resolution, date, time, and recording settings can be changed remotely. Software updates can also be sent remotely.
- >> Multiple vehicle viewing – the interface can show 32 live and recorded streams at one time, meaning that many fleets can be managed on a single interface.
- >> SOS button – the introduction of our SOS button on the DVR means if an incident occurs, the driver can push the button, and the central office will be immediately notified. This will allow your team to quickly and easily investigate the issue. As well as time and date, a video clip of between 1 to 2 minutes can be saved on the server from when the alarm is pushed on the device.
- >> Geofencing – multiple fences can be applied and notifications will alert the user when a vehicle enters or leaves those zones. Not only does this provide an anti-theft security feature, businesses can also use geofencing to monitor employees in the field, automate time cards and keep track of individual vehicles over particular time periods.



# LIVE VIEW SOFTWARE >>

## NOTIFICATIONS

Without Live View, if your vehicle was involved in an incident, you would only hear about what had happened once your driver returns to your site and reports the incident. With our Live View system, you will receive notifications tailored to your own specification. In case of an incident, an alarm will be displayed on the Live View page or direct to your mobile phone. It does not interrupt the user view; but like an exception report, it can alerting users that action is required.

## HISTORIC TRACKING

The real-time vehicle locator can be expanded to show single or multiple vehicle locations. If a vehicle is offline, the last location where it was connected will be displayed.

The 'Track' tab provides the historic location, speed, and DVR status. Usefully, it can map the historic route, showing where the vehicle has travelled in 30 second intervals. It is possible to search this function by time and date. The information is stored on our dedicated secure server, meaning that vehicles that are not online can also be checked. In terms of vehicle safety and security, this is an added bonus of the Live View system. When added to the 'Status' of the DVR, the Live View system can help to highlight issues of suspected device tampering or fuel theft.

## REMOTE DOWNLOAD & HISTORIC VIEWING

Our standard tariff comes with a fair-use cap; however, additional data can be purchased in bundles. Historic recordings can be remotely downloaded or streamed online by pinpointing the desired time and date. This allows the user to act quickly in response to incident reports. The file is saved in several ways - on the local device and on our server. Single or multiple channels can be downloaded and saved in a secure format, which is only playable on our local PC software (where it can be converted to AVI if required).

Photos can also be viewed using the 'Record' tab. The photos are snapshots that can be linked to the alarms and other custom settings from the server side. The photos are saved to our dedicated secure server.

Alarm inputs can be linked to different events (e.g. the rear door opening for a delivery). This type of setting does require additional wiring and configuration, but greatly enhances the functions available and can be tailored for the specific needs of the business.

## EMAIL NOTIFICATION

We recommend that email alerts are sent to a dedicated person in your company. In the event of equipment failure, this provides you with a fail-safe beyond the driver's daily walk-around check. Under FORS Standard v5, daily checks of electronic safety is now compulsory. In the event of DVR video loss or hard drive failure, an email alert can be sent directly to designated contacts within your organisation.

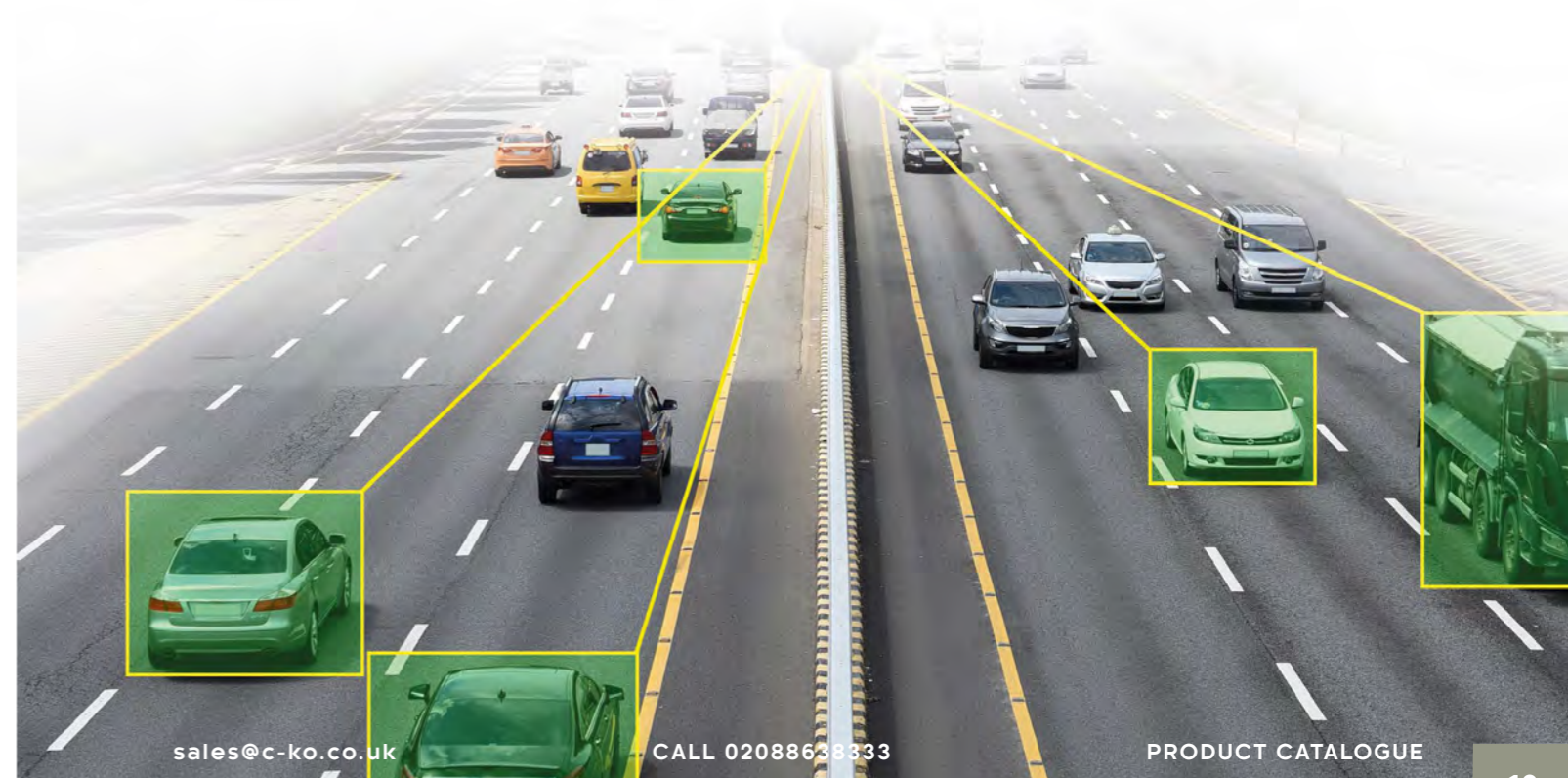
After understanding your needs, and with your permission, email alerts can be set up to multiple email addresses per vehicle or per group of vehicles. Custom input alarms can also be set to report by email at certain times, or when an SOS button is pressed. As part of the initial set up, we can talk through your business needs and customise the settings to ensure that you get the most out of our Live View system.

## PHONE APP

The phone app provides the most basic information compared to the feature-packed desktop version. However, for quick and easy reference, the phone app allows users to check if vehicles are online, view the cameras in real time, and see their current or last location.

## CHANGING DVR SETTINGS

Our Live View desktop application allows DVR configuration settings to be changed. Settings - like alarm triggers, camera types and many others - can be altered without having to be on site with the vehicle. Current settings can also be displayed. Making changes to settings after installation may be advantageous to tweak the systems usability, or when new features become available. The DVR must be connected to Live View to access this function. User access control levels can be set so that settings can only be altered by those with the necessary permissions, securing alterations and ensuring consistency across the fleet.



# DATALIVE SOFTWARE >>

## INTRODUCTION

Revolutionise your fleet management with the cutting-edge Datalive software; a suite of modular applications that can be customised to meet your needs. This is your key to unlocking unparalleled efficiency, protection, and driver safety. Furthermore, this solution can assist you in achieving FORS, DVS, and Earned Recognition compliance.

## TELEMATICS

Datalive's web-based telematics solution provides managers with 24/7 intelligence, valuable insights, and complete operational control. Track the live location of your entire fleet, review historical overviews of vehicle journeys, analyse driver behaviour, and much more.



### Track It

Live location and key status of your entire fleet and assets.



### Trace It

Historical overview of a vehicle's journey showing duration, distance and stops. Review the route taken on an easy-to-use map.



### Analyse It

Analyse your driver's behaviour using a customisable scoring system.

## CONNECTED AI CAMERAS

Protect vulnerable road users while ensuring that vehicles are being driven safely and correctly. Stream live audio and video footage, review triggered events, and report any incidents directly into your FNOL team. Industry-leading AI technology can remove false positive events, removing time-consuming manual validation of incidents.



### Review It

Review triggered driving and speeding events with our Connected AI Camera platform. Download video footage, searchable by date and time. Investigate claims efficiently based on a priority of Red, Amber and Green rating without costly vehicle downtime.



### Filter It

Cutting-edge AI technology removes false positive events. Fast and highly accurate cloud AI provides powerful analysis and reduces manual validation. Leaving only critical and important events for viewing.



### Stream It

View live audio and video footage through your vehicle's bespoke camera system. Proactively monitor and assist drivers remotely and provide real-time customer updates.

## DIGITAL FLEET COMPLIANCE

Ensure high standards of professionalism and reliability across your fleet. This set of modules will help you to perform audits and checks; ensuring that high standards of vehicle condition are optimised and maintained.



### Check It

Digitalised daily vehicle damage and maintenance checks completed by drivers, supervisors, and auditors. Indicate via the app, any damage or maintenance issues on an interactive vehicle diagram.



### Achieve It

This module measures all DVSA Earned Recognition KPIs for defects, inspections, and MOTs helping your fleet achieve ER status. Providing interactive communication between auditors, managers and operators to fall in line with ISO guidelines. This is a required module for DVSA's Earned Recognition Scheme.



### Defect It

Manage your fleet defects, from initial report to repair. Provides cohesive collaboration between drivers, planners, managers, and 3rd party garages. This is a required module for DVSA's Earned Recognition Scheme.



### Onboard It

Easily onboard your drivers. Record, validate, and monitor expiring documentation, ensuring compliance. The app also offers a fully customisable driver training process.



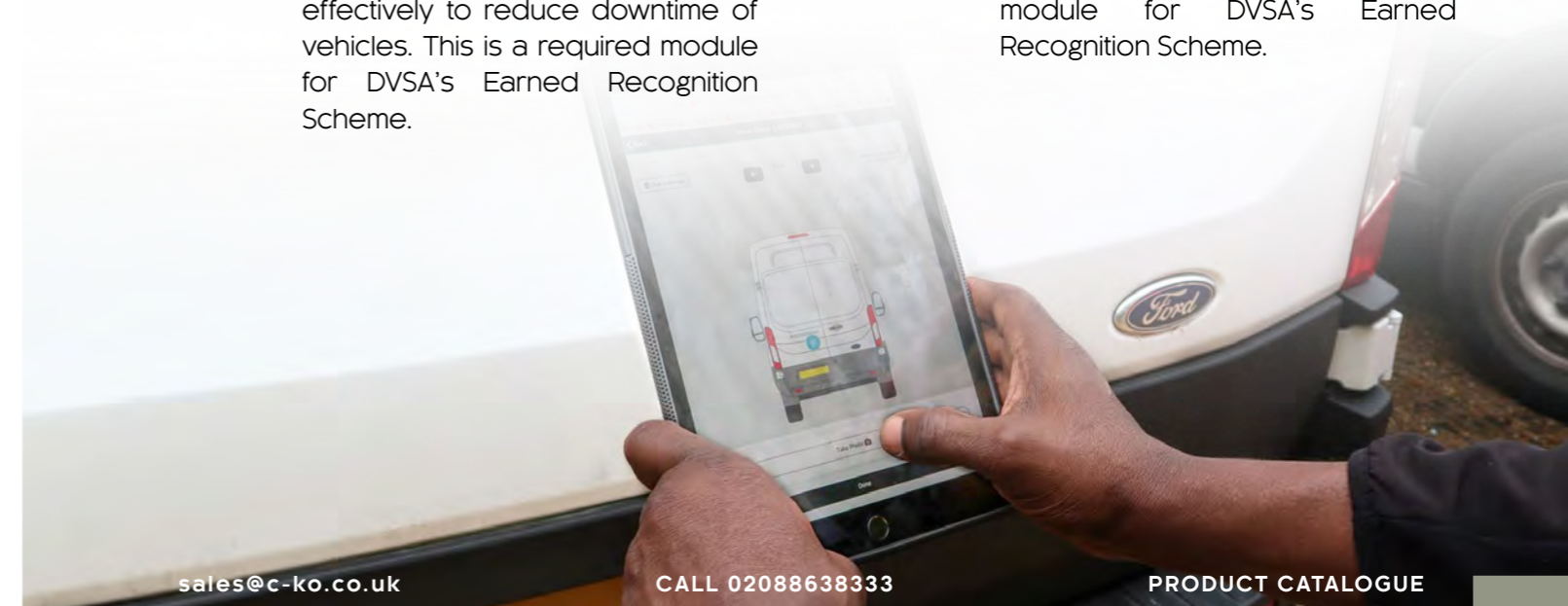
### Inspect It

Schedule and complete vehicle safety inspections, vehicle equipment safety inspections, MOTs, and services ensuring compliance across your fleet. Plan effectively to reduce downtime of vehicles. This is a required module for DVSA's Earned Recognition Scheme.



### File It

DVSA accredited digital vehicle file for all documents. Easy to use dashboard removes manual intervention and ensures compliance. This is a required module for DVSA's Earned Recognition Scheme.





# CATEGORY 2

## Digital Video Recording



### BENEFITS

#### Safety

Monitor driving ability and standards to improve driver manoeuvring, visibility, and concentration. Can also be used to facilitate safe loading and unloading practices.

#### Protection

Offers security and damage prevention from crash-for-cash, inflated/fraudulent claims, and unjustified personal injury claims.

- Record up to 8 channels of video and audio, plus 2 IPC
- Built in GPS for vehicle location, speed, and time which is also watermarked including vehicle registration on the video footage
- Built in 3-Axis G sensor to detect vehicle impact, harsh braking, and rapid acceleration
- Customisable alarm inputs to record events and automatically view selected cameras on screen, for example to display side camera when indicating
- Alarm output to trigger other devices
- Intelligent voltage protection to turn the DVR off at specified parameters
- Options for time sync, with GPS and automatic daylight-saving time switch
- Multiple power modes - delay switches on with the vehicle's ignition and off after a customisable point, timing turns on and off at set times. Other options available to keep the DVR on and switch the cameras off
- Customisable recording options for recording selected channels when the ignition is on/off
- Records in AHD 1080p/720p or D1 camera format, with individually selectable channels
- SD card back up function
- Snapshot image alarm function. Export config files by USB for fleet continuity
- Cameras can be mirrored, flipped, and orientated on the DVR

# DVR / Comparison Chart



### DVR COMPARISON CHART

We take pride in our ability to meet the requirements of our clients when it comes to Digital Video Recorders (DVRs). Whether you're seeking robust storage capacity, enhanced video quality, or additional channels, our extensive range of DVRs offer the ideal solution that will exceed your expectations.

	 Front of product	 Front of product	 Front of product
	 Back of product	 Back of product	 Back of product
	DVR-4SD	DVR-4HD	DVR-8HD
<b>Recording</b>			
Max Resolution	1080P (1920 X 1080)	1080P (1920 x 1080)	1080P (1920 x 1080)
Channels	4	4 (plus 1 IPC)	8 (plus 2 IPC)
Audio	√	√	√
Video Compression	H.265+ Encrypted AVI	H.265+ Encrypted AVI	H.265+ Encrypted AVI
AHD Compatible	√	√	√
IPC Compatible	X	1 Channel	2 Channel
<b>AV in / out</b>			
Video input	4 x 4 pin aviation	4 x 4 pin aviation	8 x 4 pin aviation
Video output	4 pin aviation, VGA	4 pin aviation, VGA	4 pin aviation, VGA
Audio input	4 x 4 pin aviation	4 x 4 pin aviation	8 x 4 pin aviation
Audio output	4 pin aviation	4 pin aviation	4 pin aviation
OSD	1 / 2 / 4	1 / 2 / 3 / 4 / 5	1 / 2 / 3 / 4 / 6 / 8 / 9 / 12
<b>Network streaming</b>			
Wi-Fi	Optional	Optional	Optional
4G Compatible	Optional	Optional	Optional
Mobile App	Android / IOS	Android / IOS	Android / IOS
<b>Storage / Backup</b>			
HDD / SSD	X	2.5" SATA II (2TB max)	2.5" SATA II (2TB max)
SD Card	2x SDxC (256GB max)	1x SDxC (256GB max)	1x SDxC (256GB max)
Backup	USB 2.0 / network	USB 2.0 / network	USB 2.0 / network
<b>Peripheral</b>			
Lockable	√	√	√
GPS	√	√	√
G-Sensor	√	√	√
Timer off Delay	Up to 24 hours	Up to 24 hours	Up to 24 hours
HDD / SD Failure Warning	√	√	√
Motion Detection	X	X	X
Camera Full Screen Trigger	√	√	√
Split Screen Camera Trigger	X	X	X
USB Mouse Control	√	√	√
Remote Control	Optional	Optional	Optional
USB Port	USB 2.0	USB 2.0	USB 2.0
<b>Other</b>			
Power output	12v	12v	12v
Power input	8 - 36v (DC)	8 - 36v (DC)	8 - 36v (DC)

# DVR / Devices



## DVR4SD-10-256



- 4 Channel SD DVR – 1080P, AHD, D1 256GB**
- 1080P (1920 x 1080)
  - Video input: 4 x 4 pin aviation
  - Video output: 4 pin aviation, VGA
  - Audio input: 4 x 4 pin aviation
  - Audio output: 4 pin aviation
  - OSD: 1 / 2 / 4
  - 256 GB SD Card
  - Also available with 4G live connectivity

## DVR4HD-4G-10-1TB



- 4 Channel HDD DVR - 1080P, AHD, D1, IP - 4G - Kit**
- 1080P (1920 x 1080)
  - Video input: 4 x 4 pin aviation
  - Video output: 4 pin aviation, VGA
  - Audio input: 4 x 4 pin aviation
  - Audio output: 4 pin aviation
  - OSD: 1 / 2 / 3 / 4 / 5
  - 1 TB SSD
  - Also available without 4G live connectivity

## DVR8HD-4G-10-1TB



- 8 Channel HDD DVR - 1080P, AHD, D1, IP - 4G - Kit**
- 1080P (1920 x 1080)
  - Video input: 8 x 4 pin aviation
  - Video output: 4 pin aviation, VGA
  - Audio input: 8 x 4 pin aviation
  - Audio output: 4 pin aviation
  - OSD: 1 / 2 / 3 / 4 / 6 / 8 / 9 / 12
  - 1 TB SSD
  - Also available without 4G live connectivity



With the 4G version of the our DVRs, you can make full use of our LiveView software. Please note that a subscription fee is required for access.

# DVR / Packages



## 3 Camera Package For Tractor Units

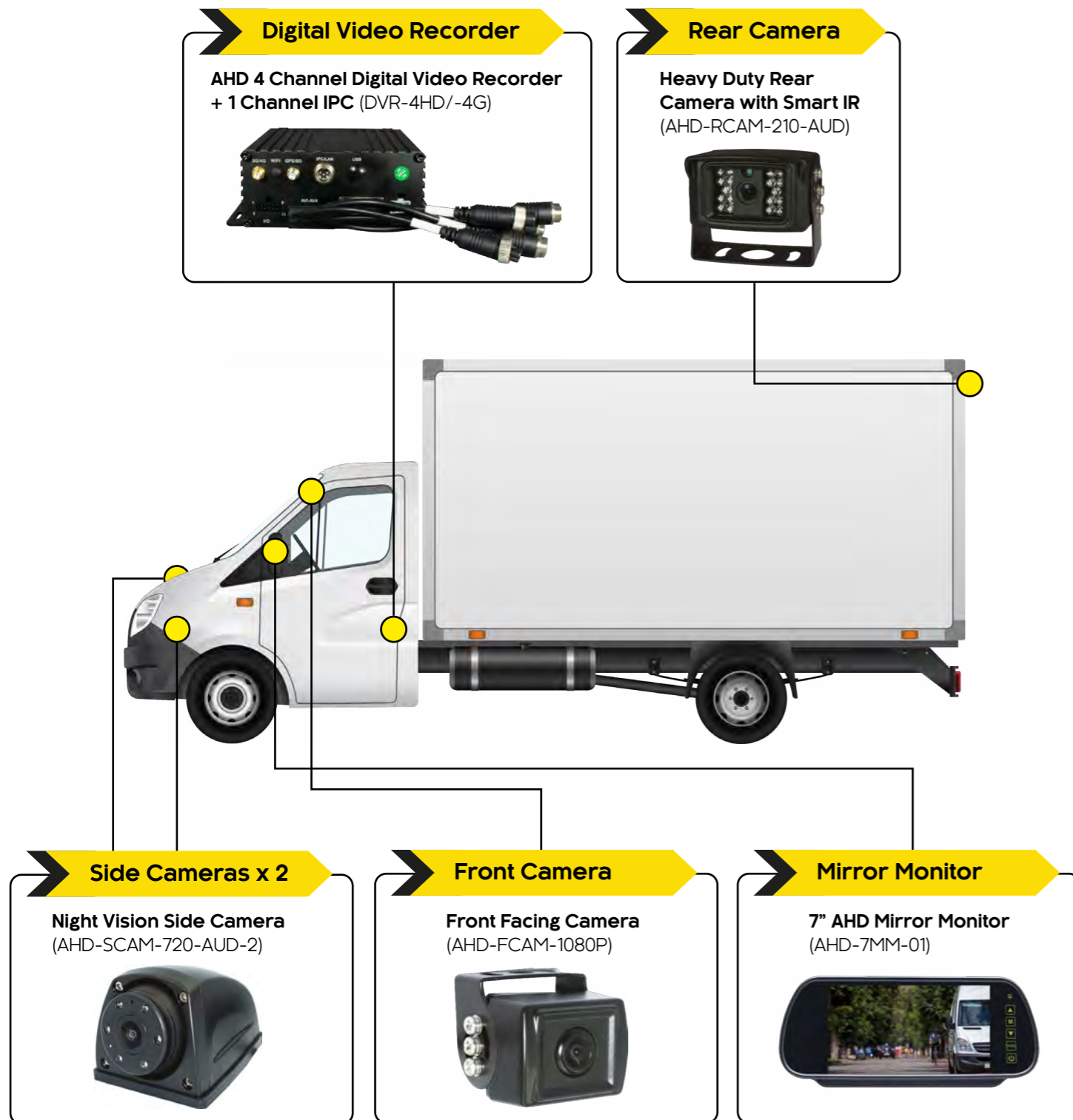
For tractor units, we highly recommend our 3-camera kit, featuring two side cameras and one front camera. This setup provides optimal coverage for monitoring blind spots. Paired with our DVR, these cameras deliver high-quality video footage directly onto the 7" monitor.





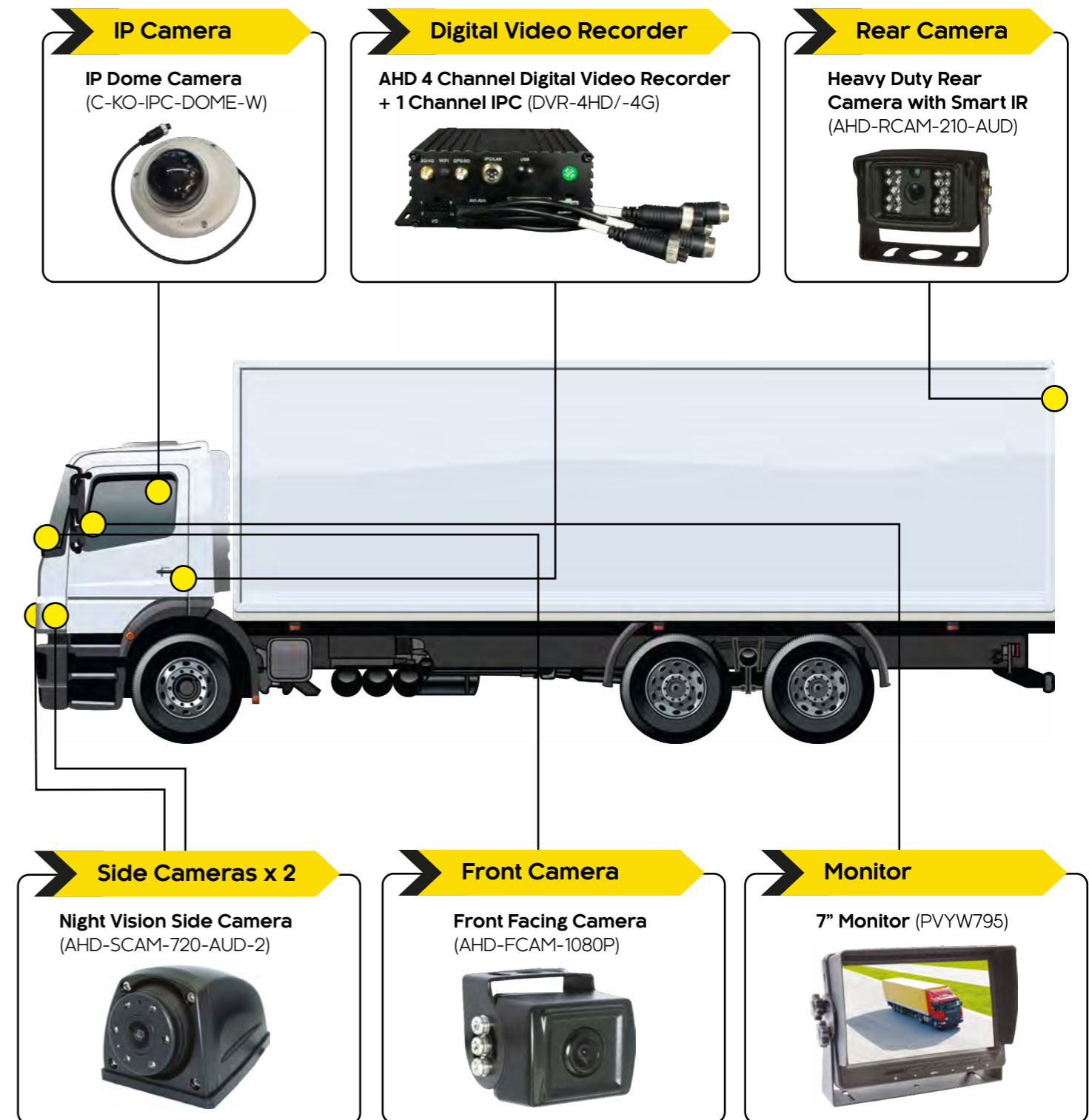
## 4 Camera Package For Box Vans

Our box van package is equipped with two side cameras, a front camera, and a rear camera featuring infra-red capability, ensuring complete coverage around the vehicle. Whether navigating tight spaces or reversing in low-light conditions, our advanced camera system provides clear and reliable footage.



## 5 Camera Package For Rigid HGVs

Our cutting-edge 5-camera system for rigid HGVs, ensures unparalleled safety and monitoring capabilities. With two side cameras, a front camera, a rear camera, and an additional IP camera dedicated to monitoring the driver cabin, this package offers comprehensive coverage of both inside and outside the vehicle.



## DVR / Accessories

### CT-TRAY



#### » Spare DVR Caddy

- Supplied without media installed
- DVR must format new media for recording to begin
- USB 2.0 Type B connection on rear

### CT-REMOTE



#### » Spare Remote Control for DVR

- Spare Remote Control for DVR
- Supplied with battery
- Additional batteries also available

### DVR-TRAY



#### » Spare/Replacement Media Tray

- Media caddy/tray for 2.5" drives for the DVR-4-HD & DVR-8-HD range

### CT-KEY



#### » Key to Unlock DVR Tray

### DVR-MOUSE



#### » DVR Mouse

- USB Mouse for DVR configuration
- Optical Sensor
- Compact Design

### DVR-MIC



#### » DVR Microphone Kit

- Audio microphone for DVR
- 4Pin aviation connection
- Audio / Video Splitter lead included

## DVR / Accessories

### DVR-GPS-ANTENNA



#### » GPS Antenna for DVR

- GPS Antenna
- Magnetic
- SMA connector
- 2.5metre cable

### DVR-SATA-USB



#### » DVR to SATA HDD USB Cable

- Connection from SSD to PC
- USB to SATA
- USB 3.0

### DVR-3G/4G-ANT



#### » External 3G/4G Antenna

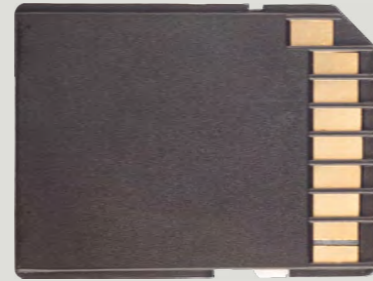
- SMA connector



## CPC-SW03637



## SD-CARD



### » Panic Button For DVR System

- Waterproof push button switch
- Green LED - 12Volt
- 22mm Hole Diameter
- Nut fitting to allow mounting into pannels up to 9mm
- IP65 Rating

### » SD Card (32GB, 64GB, 128GB)

- Available in various memory capacities.
- DVR (on factory settings) will use 650MB per channel, per hour
- Can be used with our DVRs to record footage
- Function must be enabled on DVR to switch to SD card recording in the unlikely event of hard drive failure

## DVR-SSD



### » 2.5" Solid State Drive (500MB, 1TB, 2TB)

- Available in various memory capacities.
- Recommended for DVRs
- DVR (on factory settings) will use 1.2GB per hour, per channel at 720p
- 5-year manufacturer warranty
- 7mm - SATA III-6Gb/s

# CATEGORY 3 Compliance Packages





## » PRODUCT OVERVIEW

Our Progressive Safe System (PSS) solution is designed for aftermarket application to a wide range of vehicle makes and models which in some cases additional accessories in the form of brackets and camera spacers are required to allow for operational performance.

The PSS solution is designed to protect vulnerable road users in an approach aligned to European Union and the United Nations Economic Commission for Europe (UNECE), namely R151 for Blind Spot Information System (BSIS) and R159 for Moving Off Information System (MOIS).

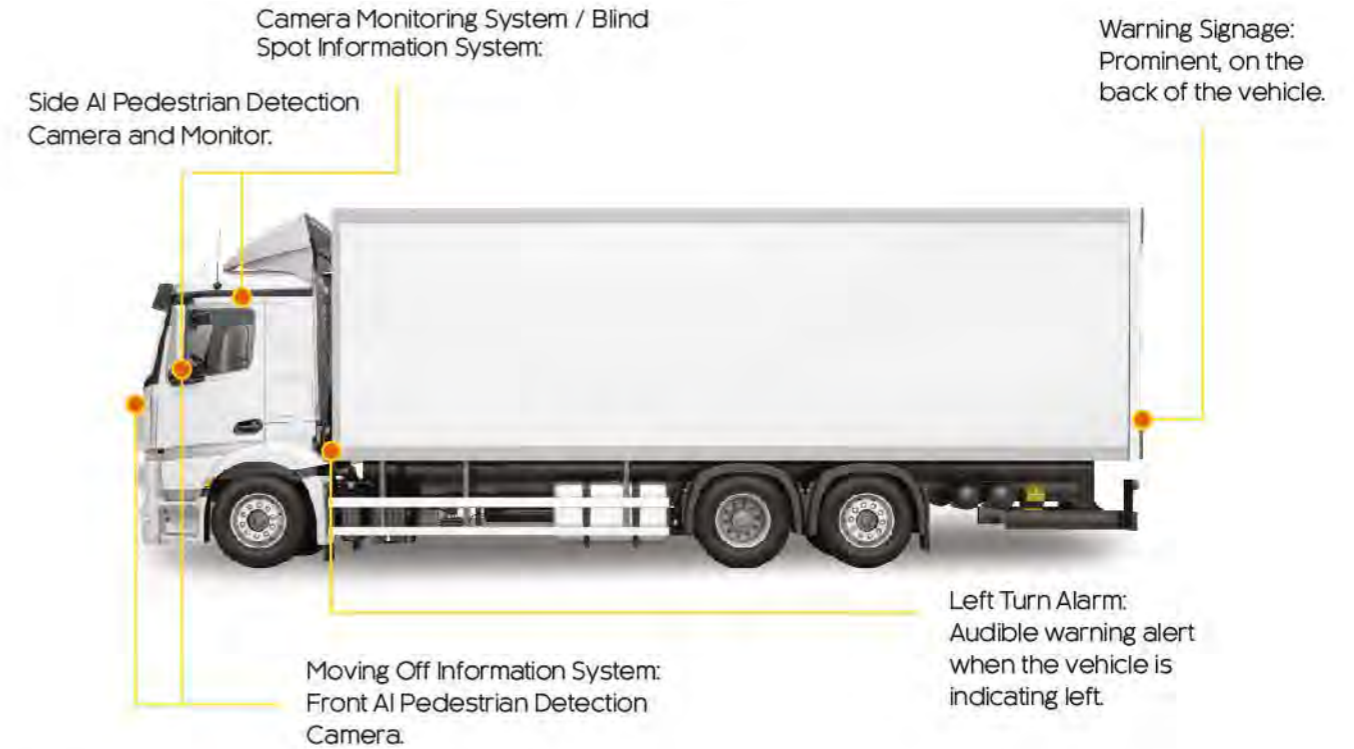
The core of the Blind Spot Information System and Moving Off Information System is based on using Edge Artificial Intelligence Video Analytics. Using edge AI technology allows detection of vulnerable road users (VRUs) whilst ignoring street side furniture locally without delay associated with cloud-based AI systems.

AI Cameras are installed on the front and side of the vehicle. Configurable detection zones are set using a removeable USB tool once cameras have been positioned and angled correctly onto the vehicle based on our method statement and installation guidance. We recommend photographic evidence of the detection zones using markers on the ground to prove that the cameras have been configured. In events of complete power loss to the vehicle the configuration remains consistent without need for recalibration.



## » Our Solution

- Camera Monitoring Systems (CMS) / Blind Spot Information System (BSIS) – A side AI camera on the near side of the vehicle aimed down to eliminate the blind spot, combined with a monitor situated on the near side pillar. Operational at all times under 20MPH.
- Moving Off Information Systems (MOIS) – Another AI camera is fitted to the front of the vehicle to allow detection of VRUs for safe moving off.
- Left Turn Alarm – Activated when the left turn signal is on. An additional button is also installed on the dash to stop the sounder activating at night.
- Warning Signage - Prominently displayed on the vehicle.



## » Product Testing & Approval

Our extensive trials and thousands of miles of driving data ensure that the detection of vulnerable road users (VRUs) is at its optimal level. The introduction of the PSS largely focuses on the reduction of false positives generated by sensors, which detect street side objects (like traffic cones and parked cars) as well as VRUs. Alternatively, our AI cameras accurately detect VRUs, reducing false positives and thus creating a better experience for the driver.

The AI Cameras act as an extra pair of eyes on the road for the driver, alerting them of any VRUs within the vehicle blind spot and camera detection zone. Documentation of the installation and calibration of the AI cameras on each vehicle fitted will be required by TfL for the June 2024 permit application process. Positioning of the equipment and detailed technical specification must align with the guidance set out by TfL in the 2023 documentation.

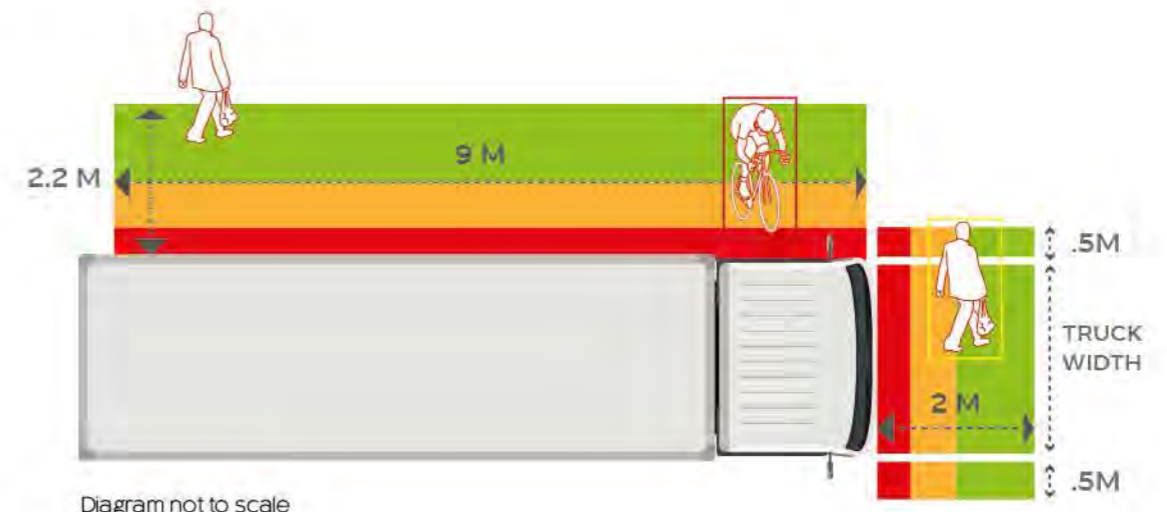


Diagram not to scale

## >> PRODUCT OVERVIEW

The 360° 'Birds-Eye-View' camera package utilises four cameras, with one on each side of the vehicle to provide a complete top-down view of the entire vehicle. All cameras include ultra-wide-angle lenses, thus ensuring that their field of vision seamlessly overlaps at each corner of the vehicle. An ECU (Electronic Control Unit) is used to blend the four images together to produce the look-down view and a 'vehicle mask' is overlaid to illustrate the vehicle's positioning.

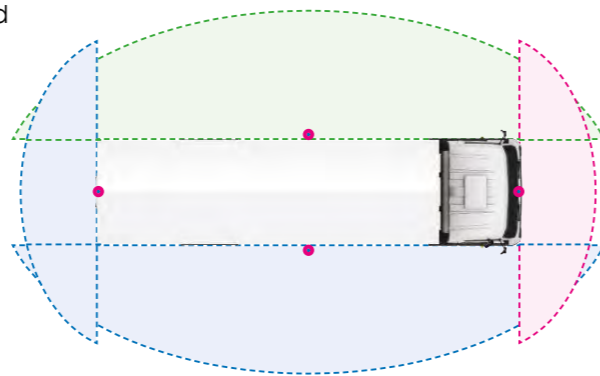
Once fitted, the system will require calibration to ensure that the correct view has been successfully configured. This is a simple process to follow, in which the friendly and knowledgeable team at CKO will be happy to assist you. The system can be used with any vehicle type and size.



## >> Our Solution

The 360° 'Birds-Eye-View' package consists of the following:

- 7" Monitor
- 4 ultra-wide-angle cameras (metal case, easy fit) and cables (1x18m, 2x10m & 1x5m)
- ECU
- Remote Control
- Upgrade Options:
  - Digital Video Recorder
  - Waterproof Monitor (ideal for Plant use)
  - Side Sensors
  - Turning Warning Alarm



## >> How It All Works

The monitoring system is built to enhance vehicle safety and situational awareness. The primary view consistently presents a birds-eye perspective on the monitor. Meanwhile, the secondary view transitions between viewpoints based on the vehicle's manoeuvres, contingent upon the presence of the appropriate wiring configuration. While the optimal setup typically involves utilising a separate monitor dedicated to the 360° system, the flexibility exists to integrate it with the vehicle's existing monitor, facilitated by vehicle specific leads available upon request.



By effectively eliminating blind spots, particularly when driving in dense urban environments where visibility can be compromised, the system becomes an indispensable asset for enhancing safety on the road. The system features a plug-and-play design, with effortless connectivity to a DVR for recording footage from all cameras. This functionality is invaluable for protection against fraudulent insurance claims.

## >> Core Benefits

- Cables and accessories provided
- Easy remote configuration completed by experienced programmers with pre-sets for optimal birds-eye view
- Effectively eliminates blind spots
- Best option for vehicle safety in busy urban environments, helping you to protect vulnerable road users
- Auto-switches to the relevant camera when turning and reversing



# CATEGORY 4

## Dash Cameras



# DASH CAMERAS

## DC-DVR-E9-F



### Front Only Full HD Dash Camera

- Video Resolution: Front 1080p @ 30fps
- Image Sensor: Sony Starvis IMX307
- View Angle: Front 145°
- Wi-Fi: 802.11/b/g/n
- External smart GPS
- 3-Axis Gravity G-Sensor
- Recording modes: Driving/Event/Parking/Photo
- Up to 128GB micro SD card, format free
- Memory Format: TAT included
- Power Input: 12V to 24V (12V@230mA)
- Working Temperature: -20° to 65°
- High temperature cut off
- Low power car battery protection
- Voice recording through built-in MIC

MyDean software/mobile app (for Android and iOS) included. Allows you to preview, download, and playback video footage.

## DC-DVR-E9



### Front and Rear Full HD Dash Camera

- Front and Rear version of DC-DVR-E9-F
- Video Resolution: Rear 1080p @ 25fps
- View Angle: Rear 140°

### Optional Additional Cameras

Compatible with DC-DVR-E9/-F

#### DC-DVR-E-RCAM



#### External Rear Camera

- Second external camera option

#### DC-DVR-E-REAR-DAB



#### Internal Rear Camera with DAB Fix

- Second internal camera option



# DASH CAMERAS

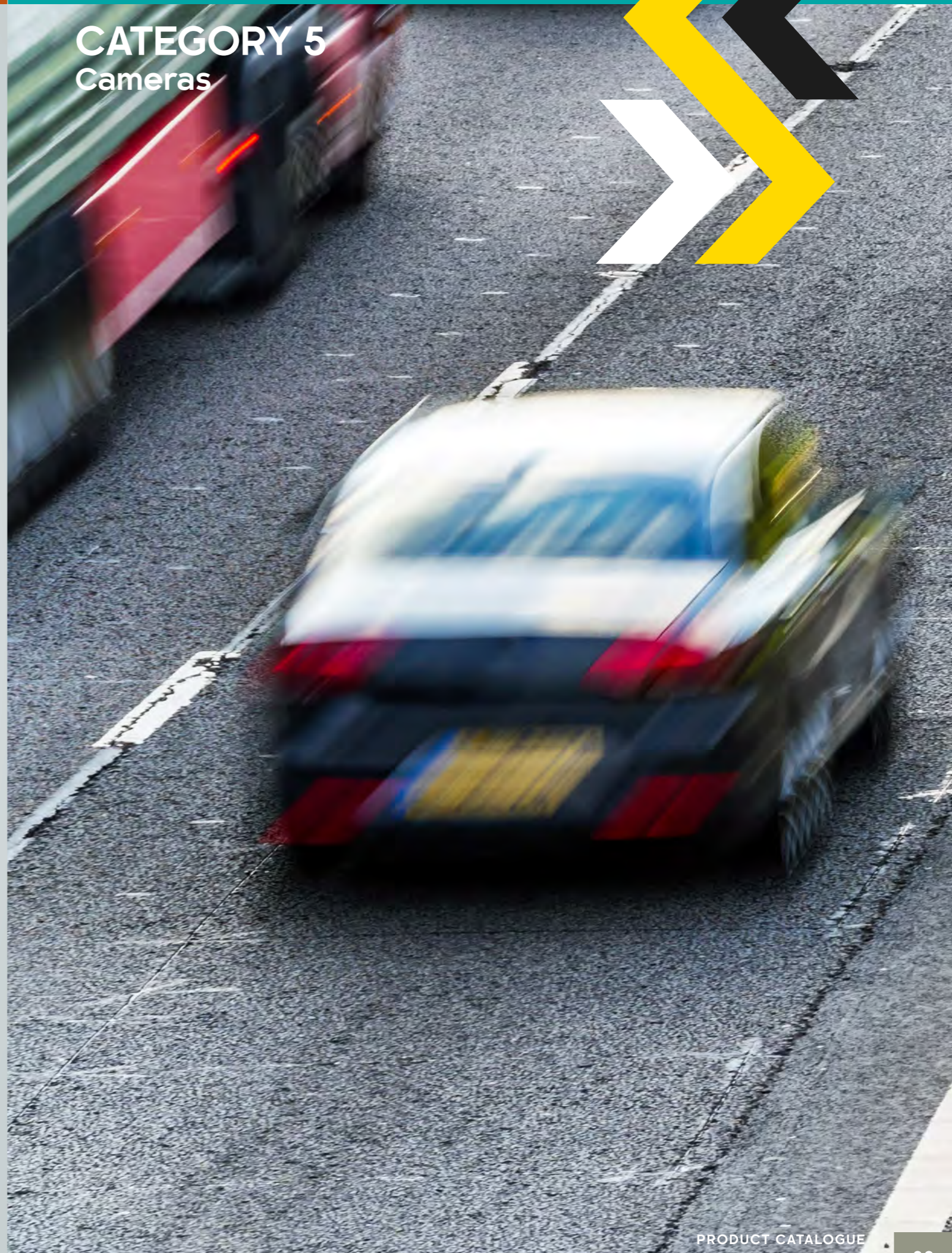
## CATEGORY 5 Cameras

**NEW  
PRODUCT**

FHD 360° Rotating Dash Camera with  
GPS, G-Sensor, and Wi-Fi



- 1080P Full HD recording
- 170° Wide view angle, 130° Horizontal, 80° Vertical
- Built in G-force sensor, GPS & WiFi
- Software download for video with map information
- Park mode triggered by vibration
- Stores up to 128GB (TF memory card not included)
- AV/HDMI out
- Built-in speaker & microphone
- Suitable for 12/24V vehicles





**CKO-AI-AD38**

AI Pedestrian Detection Camera



- Pedestrian and cyclist detection
- Front / Rear / Side View: Detection range 0.5-20M adjustable; Bird View: 3M\*6M detection area adjustable
- Adjustable zones to show detected areas
- Full high-definition video output, can be overlaid with colour zones and pedestrian warning information
- No control box needed, can be directly connected to normal monitors / DVR
- Audio alarm output, external loudspeaker supported
- Calibration via Wi-Fi hotspot
- Waterproof / dustproof rated to IP69K
- Configurable via USB dongle



CKO-AI-AD38-Spacer  
Spacer for AI Pedestrian Detection



CKO-CAM-SIDE-B  
Stainless Steel Bracket -  
Camera Side Mount



CKO-EXT-AI-10M  
10M 8pin Extension Cable  
for AI Camera



CKO-AI-AD38-150  
AI Pedestrian Detection  
Camera 150 Degree Lens



CKO-CAL-AITool  
USB Wi-Fi Calibration Tool  
for AI Camera

**AHD-CT200-F**

AHD Front Windscreen Mount Camera



- Window Mounted Front Facing Camera
- 4 Pin aviation connection
- Mini BMW connector to 4 Pin aviation for easier application
- TV system: AHD
- Output resolution: 720p
- FPS: 25
- Viewing angle: 110°(H) 60°(V)
- Image device: 1/3" CMOS OV60
- Focal length: f: 2.3mm
- Operating voltage: 12V DC
- Dimensions: 60mm(W) 35mm(D) 30mm(H)

# CAMERAS / AHD



## AHD-FCAM-1080P

### Front Facing Camera



- 4 Pin aviation connection
- Mini BMW connector to 4 Pin aviation for easier application
- TV system: AHD
- Output resolution: 1080p
- FPS: 25
- Viewing angle: 130°(H) 70°(V)
- Image device: 1/4" CMOS
- Focal length: f: 2.3mm
- Operating voltage: 12V DC
- Dimensions: 39mm(W) 35mm(D) 30mm(H)

## AHD-FCAM-140-CL

Image device: 1/3" CMOS OV60 option

## AHD-RCAM-1080P

### 1080p Heavy Duty Rear Camera



- 4 Pin aviation connection
- TV system: AHD
- Output resolution: 1080p
- FPS: 25
- Viewing angle: 89°(H) 72°(V) 103°(D)
- Image device: 1/3" CMOS
- Focal length: f: 2.8mm
- Operating voltage: 12V DC
- Dimensions: 80mm(W) 63mm(D) 70mm(H)
- Mirror image

## AHD-SCAM-725-1080P

### 1080P Night Vision Side Camera



- TV system: AHD
- Output resolution: 1080p
- FPS: 25
- Viewing angle: 140°(H) 80°(V)
- Image device: 1/4" CMOS
- Focal length: f: 2.8mm
- Operating voltage: 12V DC
- Dimensions: 60mm(W) 75mm(D) 50mm(H)
- Mirror image selectable
- Guide lines selectable
- Built in Microphone

# CAMERAS / AHD



## C-KO-CAM-410-HD

### Side View Camera WDR 1080P with Audio



- Side View Camera with Audio
- Wide Dynamic Range (WDR)
- Night vision
- 4 Pin aviation connection
- Built in Microphone for Audio
- TV system: AHD
- Output resolution: 1080p
- FPS: 25
- Effective pixels: 1920(H) x 1080(V)
- Image device: 1/2.9" CMOS
- Operating voltage: 12V DC
- Dimensions: 57mm(W) 75mm(D) 43mm(H)

## AHD-SCAM-725-1

### Night Vision Side Camera 4 Pin Only



- 4 Pin aviation connection
- TV system: AHD
- Output resolution: 720p
- FPS: 25
- Viewing angle: 130°(H) 70°(V)
- Image device: 1/3" CMOS
- Focal length: f: 2.8mm
- Operating voltage: 12V DC
- Dimensions: 60mm(W) 75mm(D) 50mm(H)
- Mirror image selectable
- Built in Microphone

## AHD-SCAM-720-AUD-2

### Night Vision Side Camera



- 4 Pin aviation connection attached to mini BM Plug
- TV system: AHD
- Output resolution: 720p
- FPS: 25
- Viewing angle: 100°(H) 70°(V)
- Image device: 1/3" CMOS
- Focal length: f: 2.8mm
- Operating voltage: 12V DC
- Dimensions: 50mm(W) 68mm(D) 43mm(H)
- Mirror image selectable
- Guide lines selectable
- Built in Microphone

## AHD-SCAM-720-AUD-2-WHITE

Night Vision Side Camera in White



# CAMERAS / AHD

## SCAM-SPACER

### Side Camera Spacer



- Allows cameras to be mounted further out. Product may need to be adapted. For use with all cameras 25mm deep.

## AHD-DOME-SM

### AHD Small Dome Camera



- 4 Pin aviation connection
- TV system: AHD
- Output resolution: 720p
- FPS: 25
- Viewing angle: 100°(H) 70°(V)
- Image device: 1/3" CMOS
- Focal length: f: 2.8mm
- Operating voltage: 12V DC
- Dimensions: 50mm(W) 68mm(D) 43mm(H)
- Mirror image selectable
- Guide lines selectable
- Built in Microphone

# CAMERAS / AHD

## AHD-DOME-600TVL

### AHD Dome Camera with Audio



- Dome Camera
- Night Vision
- 4 pin aviation connection
- Built in Microphone for Audio
- TV system: AHD
- Output resolution: 720p
- FPS: 25
- Viewing angle: 74°(H) 58°(V) 88°(D)
- Image device: 1/3" CMOS
- Operating voltage: 12V DC
- Dimensions: 86mmØ 58mm(H)

## AHD-DCAM-650

### AHD Dome Audio 720P



- AHD Dome Camera with Audio
- Night vision
- 4 Pin aviation connection
- Plastic dome cover
- Anti-tamper design
- Built in Microphone for Audio
- TV system: AHD
- Output Resolution: 720p
- FPS: 25
- Viewing angle: 90°(H) 40°(V)
- Image device: 1/3" CMOS
- Focal length: f: 2.8mm
- Operating voltage: 12V DC
- Dimensions: 77mmØ 60mm(H)

## AHD-BR-RVC07

### AHD Wing Mirror Side View Camera



- Night vision
- 4 Pin aviation connection
- Can be mounted to the wing mirror
- TV system: AHD
- Output resolution: 720p
- FPS: 25
- Viewing angle: 89°(H) 50°(V)
- Image device: 1/3" CMOS
- Focal length: f: 1.2mm
- Operating voltage: 12V DC
- Dimensions: 80mm(W) 49mm(D) 63mm(H)

# CAMERAS / AHD



## AHD-CA-9898

### AHD Dual Camera in White



- Resolution AHD 720P
- Dimensions (including mount): 104mm(W) x 66mm(D) x 97mm(H)
- Operating Voltage: 12V DC
- Power Consumption (on): 300mA max
- Power Input: Via 4-Pin Aviation Connector
- Connection Type: 2x 4-Pin Aviation
- TV System: PAL
- Operating Temperature: -30°C to +70°C
- Operating Humidity: <95% RH
- IP Rating: IP67

## AHD-RCAM-210-AUD

### Heavy Duty Rear Camera with Smart IR



- 4 Pin aviation connection
- TV system: AHD
- Output resolution: 720p
- FPS: 25
- Viewing angle: 89°(H) 72°(V) 103°(D)
- Image device: 1/3" CMOS
- Focal length: f: 2.8mm
- Operating voltage: 12V DC
- Dimensions: 80mm(W) 63mm(D) 70mm(H)
- Mirror image
- Built-in Microphone

## AHD-RCAM-210-AUD-CONDUIT

### Heavy Duty Camera with Smart IR with Conduit

## AHD-RCAM-220-SS

### Wide Angle Heavy Duty Rear Camera



- 4 Pin aviation connection
- TV system: AHD
- Output resolution: 720p
- FPS: 25
- Viewing angle: 100°(H) 60°(V) 80°(D)
- Image device: 1/3" CMOS
- Focal length: f: 2.8mm
- Operating voltage: 12V DC
- Dimensions: 75mm(W) 55mm(D) 75mm(H)
- Mirror image

## AHD-RCAM-220-B

### Wide Angle Heavy Duty Rear Camera in Black



# CAMERAS / FORS Packages



At CKO, our mission is to ensure your fleet's compliance with the Fleet Operator Recognition Scheme (FORS) by providing top-notch vehicle safety equipment. The FORS scheme stands as a beacon of higher standards, encompassing safety, efficiency, environmental protection, and overall operational excellence.

By adhering to FORS standards, your fleet not only adopts safer working practices but also contributes significantly to reducing work-related road risks. Moreover, FORS certification instils confidence in your customers, assuring them that your fleet operates with safety and sustainability at its core. These advantages not only enhance your reputation but also provide a competitive edge over non-certified fleets.

In line with FORS's commitment to integrating cutting-edge technology, we are proud to introduce our FORS kit, featuring AI pedestrian detection cameras. With the ability to accurately differentiate between roadside fixtures and vulnerable road users, such as pedestrians and cyclists, our AI cameras represent the future of fleet safety.



Find out more about our FORS kits.  
Call us today on **020 8863 8333** (Option 1).

## C-KO-SPRINTER-CCD-CAM-N/P

### Mercedes Sprinter/VW Crafter Brake Light Camera



- 4 Pin aviation connection
- Adjustable Ball Camera
- Built in Microphone for Audio
- Replaces brake light
- Fixed mirror image
- TV system: NTSC / PAL
- Output resolution: 480i (NTSC) / 576i (PAL)
- FPS: 30 (NTSC) / 25 (PAL)
- Effective pixels: 752 x 582
- Viewing angle: 120°(H) 103°(V) 133°(D)
- Image device: 1/3" Sony CCD
- Focal length: f: 1.7mm
- Operating voltage: 12V DC
- Dimensions: 341mm(W) 119.5mm(D) 50mm(H)

**NTSC Version** (C-KO-SPRINTER-CCD-CAM-N)

**PAL Version** (C-KO-SPRINTER-CCD-CAM-P)

## AHD-SPR-CAM-PAL



### Mercedes Sprinter/VW Crafter Brake Light Camera 2006+ (Mk2)

- Mercedes Vito Brake Light Camera
- 4 Pin aviation connection
- Clips in and replaces OEM brake light
- Built brake light LEDs
- Fixed mirror image
- TV system: NTSC
- FPS: 25
- Viewing angle: 110°(H) 100°(V)
- Image device: 1/3" CMOS OV60
- Operating voltage: 9-16V DC
- Dimensions: 350mm(W) 100mm(D) 50mm(H)

## AHD-TC-CAM-LED



### Ford Transit Custom Brake Light Camera 2016+ (LED Version)

- 4 Pin aviation connection
- TV system: PAL
- Output resolution: 576i
- Mirror image: Yes – fixed
- FPS: 25
- Viewing angle: 110°
- Image Device: CMD-III
- Operating voltage: 12V DC
- Dimensions: 338mm(W) 37mm(D) 25mm(H)

## AHD-FT-CAM



### Ford Transit Brake Light Camera 2014+

- 4 Pin aviation connection
- TV system: AHD
- Output resolution: 720p
- Mirror image: Yes – fixed
- Night vision IR: Yes – 6 LEDs
- FPS: 25
- Viewing angle: 100°
- Image Device: 1/3 NVP SONY CCD
- Operating voltage: 12V DC
- Dimensions: 385mm(W) 130mm(D) 55mm(H)

## AHD-VR-CAM



### Vauxhall Vivaro, Renault Traffic Brake Light Camera 2014+

- 4 Pin aviation connection
- TV system: AHD
- Output resolution: 720p
- Mirror image: Yes – fixed
- Night vision IR: Yes – 9 LEDs
- FPS: 25
- Viewing angle: 95°
- Image Device: 1/3 NVP SONY CCD
- Operating voltage: 12V DC
- Dimensions: 232mm(W) 160mm(D) 80mm(H)



## AHD-CRAFTER-CAM



## C-KO-NI-CAM



## C-KO-VITO-CAM



### » VW Crafter Brake Light Camera AHD PAL

- VW Crafter 2017- Present day
- MAN TGE 2016- Present day
- Fits onto OEM Brake Light
- TV System: AHD
- Mirror Image: Yes - Fixed
- FPS: 25
- Effective pixels: 752 x 582
- Viewing angle: 120°(H) 103°(V) 133°(D)
- Image device: 1/3" NVP Sony CCD
- Focal length: f: 2.6mm
- Operating voltage: 12V DC
- Dimensions: 64.2mm(W) 208.9mm(D) 68.7mm(H)

### » New Iveco Brake Camera

- Iveco Daily Brake Light Camera
- Uses OEM Brake Light
- 4 Pin aviation connection
- TV system: NTSC
- Output resolution: 480i
- Mirror image: Yes
- Night vision IR: Yes - 6 LEDs
- Audio: Yes
- FPS: 30
- Viewing angle: 130°(H) 110°(V)
- Image Device: CMD-III
- Operating voltage: 12V DC
- Dimensions: 570mm(W) 120mm(D) 60mm(H)

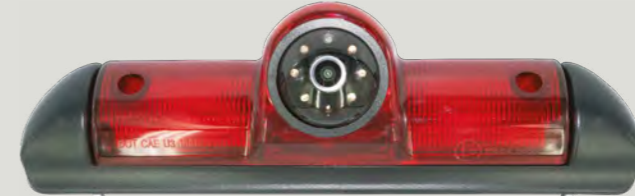
### » Mercedes Vito Brake Light Camera

- 4 Pin aviation connection
- Clips in and replaces OEM brake light
- Built brake light LEDs
- Fixed mirror image
- TV system: NTSC
- Output resolution: 480i
- FPS: 30
- Effective pixels: 510 x 492
- Viewing angle: 110°(H) 80°(V)
- Image device: 1/3" CMOS
- Focal length: f: 2.8mm
- Operating voltage: 12V DC
- Dimensions: 491mm(W) 100mm(D) 55mm(H)

## C-KO-SPR-CAM/-PAL



## C-KO-FPC-CAM/-PAL



### » Mercedes Sprinter Brake Light Camera PAL

- 4 Pin aviation connection
- Adjustable Ball Camera
- Selectable guide lines via jumper plug
- Built in microphone for audio
- Replaces brake light
- Fixed mirror image
- TV system: NTSC / PAL
- Output resolution: 480i (NTSC) / 576i (PAL)
- FPS: 30 (NTSC) / 25 (PAL)

- Effective pixels: 762 x 504
- Viewing angle: 130°(H) 110°(V)
- Image device: CMD-III
- Operating voltage: 9-16V DC
- Dimensions: 350mm(W) 90mm(D) 50mm(H)

**NTSC Version** (C-KO-SPR-CAM)

**PAL Version** (C-KO-SPR-CAM-PAL)

### » Fiat Ducato, Peugeot Boxer, Citroen Relay Brake Light Camera

- 4 Pin aviation connection
- Adjustable ball camera with night vision
- Selectable guide lines via jumper plug
- Built in microphone for audio
- Built in red LED brake light
- Fixed mirror image
- TV system: NTSC / PAL
- Output resolution: 480i (NTSC) 568i (PAL)
- FPS: 30 (NTSC) / 25 (PAL)

- Effective pixels: 762 x 504
- Viewing angle: 130°(H) 110°(V)
- Image device: CMD-III
- Operating voltage: 9-16V DC
- Dimensions: 270mm(W) 80mm(D) 57mm(H)

**NTSC Version** (C-KO-FPC-CAM)

**PAL Version** (C-KO-FPC-CAM-PAL)



## C-KO-VWC-CAM



### VW Caddy Brake Light Camera

- Clips in and replaces OEM brake light
- Fixed mirror image
- TV system: PAL
- Output resolution: 576i
- FPS: 25
- Effective pixels: 720 x 540
- Viewing angle: 110°(H) 90°(V)
- Image device: 1/3" CMOS
- Focal length: f: 2.8mm
- Operating voltage: 12V DC
- Dimensions: 175mm(W) 39mm(D) 65mm(H)

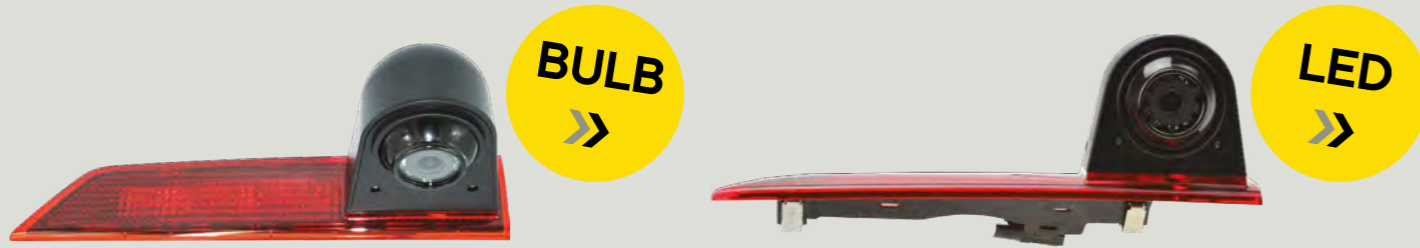
## C-KO-EXP-CAM



### Peugeot Expert, Citroen Dispatch & Toyota ProAce 2016+

- 4 Pin aviation connection
- TV system: NTSC
- FPS: 30
- Output resolution: 480i
- Effective pixels: 510 x 492
- Viewing angle: 110°(H) 80°(V)
- Image device: 1/3" CMOS7959
- Focal length: f: 2.8mm
- Operating voltage: 12V DC
- Dimensions: 260mm(W) 40mm(D) 33mm(H)

## C-KO-TC-CAM/-LED/-NTSC-LED



**BULB**



**LED**



### Ford Transit Custom Brake Light Camera

- Adjustable camera ball
  - Night vision
  - 4 Pin aviation connection
  - Clips in and replaces OEM brake light
  - Fixed mirror image
  - TV system: PAL / NTSC
  - Output resolution: 576i (PAL) / 480i (NTSC)
  - FPS: 25 (PAL) / 30 (NTSC)
  - Effective pixels: 500 x 582
  - Viewing angle: 82°(H) 79°(V) 99°(D)
  - Image device: 1/4" CMOS
  - Focal length: f: 2mm
  - Operating voltage: 12V DC
  - Dimensions: 264mm(W) 120mm(D) 68mm(H)
- Bulb Version (C-KO-TC-CAM)**
- LED Version (C-KO-TC-CAM-LED)**
- NTSC LED Version (C-KO-TC-CAM-NTSC-LED)**

## C-KO-CRAFTER-CAM/-PAL



### VW Crafter, Man TGE Brake Light Camera

- 4 Pin aviation connection
  - Adjustable Ball Camera
  - Replaces factory brake light
  - Fixed mirror image
  - TV system: NTSC
  - Output resolution: 480i
  - FPS: 30
  - Effective pixels: 752 x 582
  - Viewing angle: 120°(H) 103°(V) 133°(D)
  - Image device: 1/3" Sony CCD
  - Focal length: f: 1.7mm
  - Operating voltage: 12V DC
  - Dimensions: 64.2mm(W) 208.9mm(D) 68.7mm(H)
- NTSC Version (C-KO-CRAFTER-CAM)**
- PAL Version (C-KO-CRAFTER-CAM/-PAL)**





## C-KO-VR-CAM/-NTSC



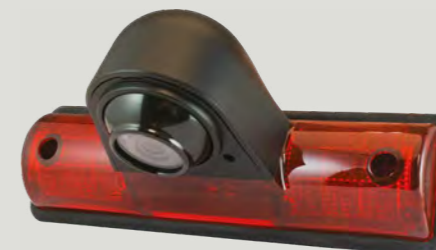
### Vauxhall Vivaro, Renault Traffic Brake Light Camera

- Adjustable camera ball
- Night vision
- 4 Pin aviation connection
- Clips in and replaces OEM brake light
- Built in brake light LEDs
- Fixed mirror image
- TV system: PAL / NTSC
- Output resolution: 576i (PAL) / 480i (NTSC)
- FPS: 25 (PAL) / 30 (NTSC)
- Effective pixels: 500 x 582
- Viewing angle: 82°(H) 79°(V) 99°(D)
- Image device: 1/4" CMOS
- Focal length: f: 2mm
- Operating voltage: 12V DC
- Dimensions: 232mm(W) 160mm(D) 80mm(H)

**NTSC Version** (C-KO-VR-CAM-NTSC)

**PAL Version** (C-KO-VR-CAM)

## C-KO-UNI-CAM



### Universal Brake Light Camera

- 4 Pin aviation connection
- Universal brake light built in LED red light
- Adjustable Ball Camera
- Fixed mirror image
- TV system: PAL
- Output resolution: 576i
- FPS: 25
- Effective pixels: 500 x 582
- Viewing angle: 82°(H) 79°(V) 99°(D)
- Image device: 1/3" CMOS
- Focal length: f: 2mm
- Operating voltage: 12V DC
- Dimensions: 125mm(W) 110mm(D) 95mm(H)

## C-KO-NRV-CAM/-NTSC



### Renault Master, Nissan NV400, Vauxhall Movano Brake Light Camera

- 4 Pin aviation connection
- Night vision
- Fixed mirror image
- TV system: PAL / NTSC
- Output resolution: 576i (PAL) / 480i (NTSC)
- FPS: 25 (PAL) / 30 (NTSC)
- Effective pixels: 648 x 488
- Viewing angle: 89°(H) 72°(V) 103°(D)
- Image device: 1/3" CMOS7959
- Focal length: f: 2.8mm
- Operating voltage: 9-16V DC
- Dimensions: 197mm(W) 109mm(D) 126mm(H)

**NTSC Version** (C-KO-NRV-CAM-NTSC)

**PAL Version** (C-KO-NRV-CAM)

## C-KO-FT-CAM



### Ford Transit Brake Light Camera

- Connection: 4 Pin aviation connection
- TV System: AHD
- Output Resolution: 720p
- Mirror Image: Yes – fixed
- Night Vision IR: Yes – 6 LEDs
- FPS: 25
- Viewing Angle: 100°
- Image Device: 1/3 NVP SONY CCD
- Operating Voltage: 12V DC
- Dimensions: 385mm(W) x 130mm(D) x 55mm(H)



## Camera Package For Vans

Elevate your driving experience with the AHD-7MM-CAM-CAB van camera package. At the heart of the solution is our cutting-edge 7" AHD Mirror Monitor, boasting a high-resolution, integrated digital display. This monitor offers a crystal-clear view of the rear of your vehicle, ensuring full control and awareness of your surroundings.

With its two-channel triggering capability, the display is activated precisely when needed. The system supports two video inputs, accommodating CVBS (D1) as well as AHD720p and AHD1080p formats.



### Mirror Monitor

**7" AHD Mirror Monitor.** Dual purpose with both clip-on and stalk (AHD-7MM-CAM-CAB)



### Rear Camera

**Rear Facing Camera**  
(AHD-7MM-CAM-CAB)



### Extension Cable

**10 Metre Extension Cable**  
(AHD-7MM-CAM-CAB)



## CW634



### Number Plate Camera with Night Vision

- Dimensions: 198mm(W) 28mm(H) 28mm(D)
- Operating Voltage: 12V
- Mirrored Image: Yes
- Night Vision IR: Yes - 4 IR LEDs
- Min Illumination: 0 Lux (with IR)
- Guide Lines: No
- Audio: Yes
- Viewing Angle: 110°(H) 80°(V)
- Connection Type: 4-pin aviation
- White Balance: Auto
- IP Rating: IP68
- Image Sensor: 1/3" CMOS PC1058
- TV System: PAL CVBS (D1)
- Effective Pixels: 960 x 576
- Emark Certification: R10
- Refresh Rate: 25fps
- Operating Temperature: -20°C to +70°C
- Operating Humidity: <95%
- Storage Temperature: -40°C to +80°C
- Storage Humidity: <95%

**AHD version also available**

## CW141642MCAI



### Number Plate Camera with Surround

- 4 Pin aviation connection
- Mirror image
- Guide lines selectable
- TV system: PAL or NTSC
- Output resolution: 576i/ 480i (NTSC)
- FPS: 25 / 30 (NTSC)
- Effective pixels: 648 x 488
- Viewing angle: 120°(H)
- Image device: 1/3" CMOS
- Focal length: f: 2.1mm
- Operating voltage: 12V DC
- Dimensions: 527mm(W) 37mm(D) 125mm(H)

## COL-M95-N-B Metal Wedge Camera



- 140 Degree Viewing Angle
- Guideline selectable - on by default, green cable
- Mirror / true image selectable - Mirror by default, white cable
- Horizontal / Vertical mounting selectable - Horizontal by default, orange cable
- 27mm wide x 31mm height x 24mm deep excluding screw thread
- 26mm needed to allow for screw thread and cable to be mounted onto vehicle
- 17mm screw thread depth
- 5mm hole size
- 59cm fly lead
- 4pin mini BM connector
- AHD version also available

NTSC Version (COL-M95-N-B)

PAL Version (COL-M95-P-B)

## CA-309-PAL

### Wide Angle Camera



- RCA connection
- TV system: PAL
- Output resolution: 576i
- Guidelines: Yes - Selectable
- Mirror image: Yes - Selectable
- FPS: 25
- Viewing angle: 170°
- Image Device: 1/3" CMOS OV60
- Operating voltage: 12V DC
- Dimensions: 28mm(W) 40mm(D) 23mm(H)

## CA-9320-800

### 800TVL Front Camera



- 4 Pin aviation connection
- Mirror image selectable via cutting green wire
- Mini BMW connector to 4 Pin aviation
- TV system: PAL
- Output resolution: 576i
- FPS: 25
- Effective pixels: 976 x 582
- Viewing angle: 110°(H) 80°(V)
- Image device: 1/3" SONY CCD
- Focal length: f: 2.3mm
- Operating voltage: 12V DC
- Dimensions: 39mm(W) 35mm(D) 30mm(H)

## CA-9401-Y

### Wedge Camera



- RCA video connection
- Guide lines selectable via joining green wires
- Fixed mirror image
- TV system: NTSC
- Output resolution: 480i
- FPS: 30
- Viewing angle: 120°(H) 110°(V)
- Image device: 1/3" CMOS OV60
- Focal length: f: 2.1mm
- Operating voltage: 12V DC
- Dimensions: 30mm(W) 34mm(D) 37mm(H)

# CAMERAS / D1



## C-KO-BR-RVC07

### Wing Mirror Side View Camera



- Night vision
- 4 Pin aviation connection
- Can be mounted to the wing mirror
- TV system: PAL
- Output resolution: 576i
- FPS: 25
- Effective pixels: 500 x 582
- Viewing angle: 89°(H) 70°(V)
- Image device: 1/3" CMOS
- Focal length: f: 2.8mm
- Operating voltage: 12V DC
- Dimensions: 80mm(W) 49mm(D) 63mm(H)

## C-KO-CAM-410

### Side View Camera with Audio



- Side View Camera with Audio
- Night vision
- 4 Pin aviation connection
- Built in Microphone for Audio
- Mirror image selectable via jumper plug
- TV system: PAL
- Output resolution: 576i
- FPS: 25
- Effective pixels: 728 x 488
- Viewing angle: 105°(H) 72°(V)
- Image device: 1/3" CMOS PC1089
- Operating voltage: 12V DC
- Dimensions: 57mm(W) 75mm(D) 43mm(H)



## C-KO-CAM-410-WHITE

### Side View Camera with Audio in White

## DCAM-ANGLE-25

## SCAM-SPACER



### Surface Mount Adaptors for Dome Cameras

- 25" Surface Mount Adaptor



### Side Camera Spacer

- Allows cameras to be mounted further out. Product may need to be adapted. For use with all cameras 25mm deep.

# CAMERAS / D1



## C-KO-IPC-DOME-W

### White IP Dome Camera



- Output resolution: 1080p
- Viewing angle: 105°
- Image device: 1/2.9" CMOS 1080P
- Operating voltage: 12V DC
- Dimensions: 120mm(W) 65mm(H)
- Waterproof Rating: IP65
- Built in Microphone
- Operating Temperature: -45-75°C

## CAM-DOME-600TVL

### Dome Camera with Audio



- Night vision
- 4 Pin aviation connection
- Built in Microphone for Audio
- Anti-tamper design
- TV system: PAL
- Output resolution: 576i
- FPS: 25
- Effective pixels: 704 X 576
- Viewing angle: 60°(H) 30°(V)
- Image device: 1/3" CMOS
- Operating voltage: 12V DC
- Dimensions: 86mmØ 58mm(H)

# CAMERAS / D1



## CA-MB-SPR-CCD-N/-P

### Overhanging Camera



- 4 Pin aviation connection
- Roof Mounted Camera
- Fixed mirror image
- TV system: NTSC / PAL
- Output resolution: 480i / 576i
- FPS: 30 (NTSC) / 25 (PAL)
- Effective pixels: 720 x 480
- Viewing angle: 85°(H) 60°(V)
- Image device: 1/3" Sony CCD
- Focal length: f: 2.1mm
- Operating voltage: 12V DC
- Dimensions: 132mm(W) 220mm(D) 100mm(H)

## CA-9406-PAL

### Night Vision Bumper Camera



- 4 Pin aviation connection
- Mini BMW connector to 4 Pin aviation
- Mirror image selectable
- TV system: PAL
- Output resolution: 576i
- FPS: 25
- Effective pixels: 976 x 582
- Viewing angle: 120°(H) 100°(V)
- Image device: 1/3" CMOS
- Focal length: f: 2.3mm
- Operating voltage: 12V DC
- Dimensions: 31mm(W) 40mm(D) 31mm(H)

## COL185-SCR-MK2

### Multi Mount Micro Camera



- Butterfly / Push Fit mount camera
- Adaptor to side mount camera
- 4 Pin aviation connection
- Mirror image selectable by cutting white wire
- Guide lines selectable by cutting green wire
- TV system: PAL
- Output resolution: 576i
- FPS: 25
- Effective pixels: 720 x 540
- Viewing angle: 110°(H) 90°(V)
- Image device: 1/3" CMOS
- Focal length: f: 2.1mm
- Operating voltage: 12V DC
- Dimensions: 37mm(W) 30mm(D) 27mm(H)

# CAMERAS / D1



## CA-9770-PAL/-NTSC

### Dual Camera



- RCA connection
  - Mirror image
  - Built-in microphone
  - TV system: PAL
  - Output resolution: 576i
  - FPS: 25
  - Effective pixels: 960 x 576
  - Viewing angle: 75°(H)
  - Image device: 1/3" CMOS PC1058K
  - Operating voltage: 12V DC
  - Dimensions: 110mm(W) 70mm(D) 80mm(H)
- NTSC Version (CA-9770-NTSC)**  
**PAL Version (CA-9770-PAL)**

## RCAM-0-087-CAM

### Heavy Duty Body Mount Camera



- Heavy Duty Body Mount Camera
- Night vision Smart IR
- 4 Pin aviation connection
- Built in Microphone for Audio
- Mirror image selectable via screw on camera rear
- TV system: PAL
- Output resolution: 576i
- FPS: 25
- Effective pixels: 960 x 576
- Viewing angle: 80°(H) 60°(V)
- Image device: 1/3" CMOS PC1058K
- Operating voltage: 12V DC
- Dimensions: 90mm(W) 62mm(D) 68mm(H)

## RCAM-0-087-CAM-W

### Heavy Duty Body Mount Camera in White



## C-KO-RCAM-210-NTSC

### Heavy Duty Rear Camera



- 4 Pin aviation connection
- TV system: NTSC
- Effective pixels: 960 x 576
- FPS: 30
- Viewing angle: 89°(H) 72°(V) 103°(D)
- Image device: 1/3" CMOS
- Focal length: f: 2.8mm
- Operating voltage: 12V DC
- Dimensions: 80mm(W) 63mm(D) 70mm(H)
- Mirror image
- Built in Microphone

# CATEGORY 6

## Monitors

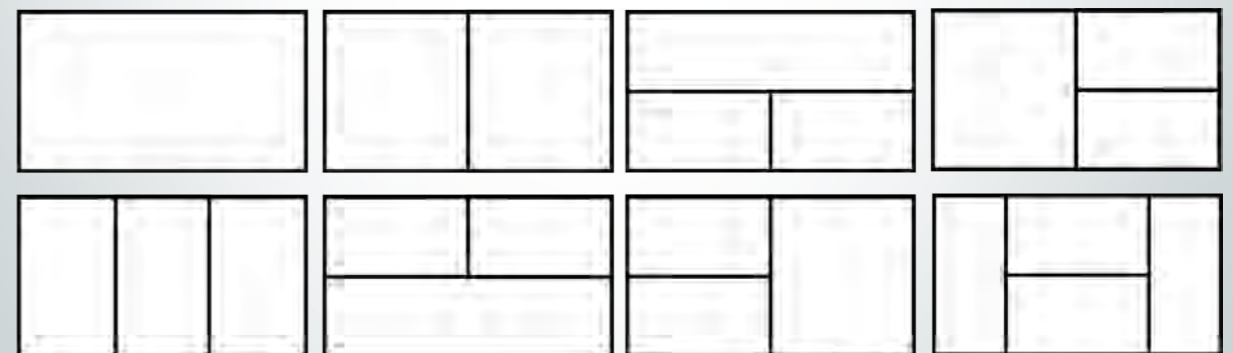


# MONITORS

## CKO-MON-QUAD 7" Quad View Monitor



- 7" HD quality digital screen
- Built-in speaker (audio on all channels)
- 4 x 4 Pin aviation inputs
- 4 Triggers
- Resolution: 1024 x 600
- Contrast ratio: 500:1
- Aspect ratio: 16:9
- Brightness: 400cd/m<sup>2</sup>
- Viewing angle: U: 50° D:70° R/L 70°/70°
- Operating voltage: 12V / 24V DC
- Dimensions: 179mm(W) 25mm(D) 120mm(H)
- Monitor can power cameras
- Shows up to 4 images on the screen at the same time
- Each input displayed on screen when triggered
- Button locking feature
- Auto dimming function in low light conditions



Screen Layout Options

# MONITORS



## AHD-MON-C13

### 7" AHD Dash Mount Monitor



- 7" Digital panel
- AHD / PAL / NTSC compatible
- 3 x 4 Pin aviation inputs
- 3 Trigger
- Resolution: 1024 x 600
- Contrast ratio: 500:1
- Aspect ratio: 16:9
- Brightness: 400cd/m<sup>2</sup>
- Viewing angle: U: 50° D:70° R/L 70°/70°
- Operating voltage: 12V / 24V DC
- Dimensions: 180mm(W) 23mm(D) 120mm(H)
- Monitor can power cameras

# MONITORS



## PV-YW795

### 7" Dash Mount Monitor



- 7" Digital panel
- PAL / NTSC compatible
- 2 x 4 Pin aviation inputs
- 2 Triggers
- Resolution: 800 x 480
- Contrast ratio: 500:1
- Aspect ratio: 16:9
- Brightness: 400cd/m<sup>2</sup>
- Viewing angle: U: 50° D:70° R/L 70°/70°
- Operating voltage: 12V / 24V DC
- Dimensions: 180mm(W) 23mm(D) 120mm(H)
- Monitor can power cameras
- Audio on CH2

## AHD-MON-C90

### 9" AHD Dash Mount Monitor



- 9" Digital panel
- AHD / PAL / NTSC compatible
- 2 x 4 Pin aviation inputs
- 1 Trigger
- Resolution: 1024 x 600
- Contrast ratio: 500:1
- Aspect ratio: 16:9
- Brightness: 400cd/m<sup>2</sup>
- Viewing angle: U: 50° D:70° R/L 70°/70°
- Operating voltage: 12V DC
- Dimensions: 192mm(W) 32mm(D) 134mm(H)
- Monitor can power cameras

## PV-YW-568

### 5.6" Dash Mount Monitor



- 5.6" Digital panel
- PAL / NTSC compatible
- 2 x 4 Pin aviation inputs
- 1 Trigger
- Resolution: 320 x 234
- Contrast ratio: 500:1
- Aspect ratio: 4:3
- Brightness: 400cd/m<sup>2</sup>
- Viewing angle: U: 50° D:70° R/L 70°/70°
- Operating voltage: 12V / 24V DC
- Dimensions: 146mm(W) 28mm(D) 110mm(H)
- Monitor can power cameras
- Audio on CH2

## CK-18 CK-18 Kit Camera



- 4 Pin aviation connection
- TV system: PAL
- Output resolution: 576i
- Mirror image: Yes
- Night vision IR: Yes - 18 LEDs
- FPS: 25
- Viewing angle: 80°(H) 60°(V)
- Image Device: 1/3" Sharp CMOS
- Operating voltage: 12V DC
- Dimensions: 80mm(W) 63mm(D) 70mm(H)

## CK-03-B 7" Camera Kit



- Heavy Duty Body Mount Camera
- Night Vision with Smart IR
- 4 Pin aviation connection
- Built in Microphone for Audio
- Mirror image selectable via screw on camera rear
- Camera Dimensions:  
• 80mm(W) 63mm(D) 70mm(H)
- 7" Digital TFT LCD
- Delay timer for trigger set on screen
- Powers cameras 12V DC
- Can mirror cameras on screen
- Built in sun shade
- Built in speaker
- 2 x 4 Pin aviation inputs
- 1 Trigger
- Operating voltage: 12V / 24V DC
- Monitor Dimensions: 172mm(W) 45mm(D) 115mm(H)



**AHD-7MM-01**  
7" AHD Mirror Monitor

**TD-03**  
4.3" Mirror Monitor with Stalk

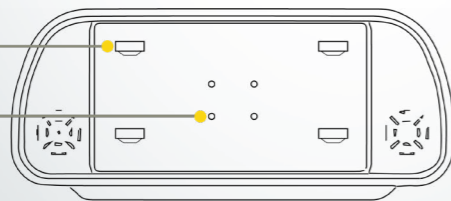


Dual purpose with both clip-on and stalk

- 7" TFT LCD Panel
- Resolution: 1024 \* RGB\* 600 (AHD Monitor)
- Aspect Ratio: 16:9
- 2 Video Inputs via 4pin Aviation connection
- Trigger camera for channel 2
- Configurable delay on triggered image via menu
- PAL & NTSC auto-switching
- CVBS (D1), AHD720p, AHD1080p compatible
- Power DC 12-24 Volts
- Dimensions: 250mm x 21mm x 109mm

- Universal mount
- Built in Ambient Light Sensor
- 4.3" Digital panel
- PAL / NTSC compatible
- 2 x RCA video inputs
- 1 Trigger
- Resolution: 480 x 272
- Contrast ratio: 300:1
- Aspect ratio: 16:9
- Brightness: 250cd/m<sup>2</sup>
- Viewing angle: U: 50° D:70° R/L 70°/70°
- Operating voltage: 12V DC
- Dimensions: 270mm(W) 44mm(D) 80mm(H)

Clip for mounting on existing mirror  
Tapped mounting holes for mirror stalk bracket



Optional mirror monitor stalk bracket



# MONITORS / Mirror Monitors



## AHD-7MM-CAM-CAB

### 7" AHD Mirror Monitor Kit



- 7" Mirror Monitor with dual purpose clip-on and stalk functionality, rear camera, and 10 metre extension cable
- 7" TFT LCD Panel
- Resolution: 1024 \* RGB\* 600 (AHD Monitor)
- Aspect Ratio: 16:9
- 2 Video Inputs via 4pin Aviation connection
- Trigger camera for channel 2
- Configurable delay on triggered image via menu
- PAL & NTSC auto-switching
- CVBS (D1), AHD720p, AHD1080p compatible
- Power DC 12-24 Volts
- Dimensions: 250mm x 21mm x 109mm
- The solution supports two Video inputs, allowing for the connection of CVBS (D1) and is AHD720p and AHD1080p compatible
- Comes with a remote control
- Optional mirror monitor stalk bracket available separately

Kit includes 7" AHD Mirror Monitor, Rear Camera, and 10m Cable



## C-KO-MIR-5C

### 5" Mirror Monitor Clip On



Rear of Product

- 5" Digital panel
- PAL / NTSC compatible
- 2 x RCA video inputs
- Switches with video signal
- Resolution: 480 x 272
- Contrast ratio: 300:1
- Aspect ratio: 16:9
- Brightness: 500cd/m<sup>2</sup>
- Viewing angle: U: 50° D:70° R/L 70°/70°
- Operating voltage: 12V DC
- Dimensions: 276mm(W) 25mm(D) 97mm(H)

# MONITORS / Mirror Monitors



## C-KO-MIR-5S

### 5" Mirror Monitor with Universal Stalk



Universal Stalk Included Rear of Product

- 5" Digital panel
- PAL / NTSC compatible
- 2 x RCA video inputs
- Switches with video signal
- Resolution: 480 x 272
- Contrast ratio: 300:1
- Aspect ratio: 16:9
- Brightness: 500cd/m<sup>2</sup>
- Viewing angle: U: 50° D:70° R/L 70°/70°
- Operating voltage: 12V DC
- Dimensions: 276mm(W) 25mm(D) 97mm(H)

## TC-06

### 4.3" Mirror Monitor Clip On



Universal Stalk Included Rear of Product

- 4.3" Digital panel
- PAL / NTSC compatible
- 2 x RCA video inputs
- 1 Trigger
- Resolution: 480 x 272
- Contrast ratio: 300:1
- Aspect ratio: 16:9
- Brightness: 250cd/m<sup>2</sup>
- Viewing angle: U: 50° D:70° R/L 70°/70°
- Operating voltage: 12V DC
- Dimensions: 276mm(W) 30mm(D) 39mm(H)

## TC-05

### 4.3" Mirror Monitor with Universal Stalk



Universal Stalk Included Rear of Product

- 4.3" Digital panel
- PAL / NTSC compatible
- 2 x RCA video inputs
- 1 Trigger
- Resolution: 480 x 272
- Contrast ratio: 300:1
- Aspect ratio: 16:9
- Brightness: 250cd/m<sup>2</sup>
- Viewing angle: U: 50° D:70° R/L 70°/70°
- Operating voltage: 12V DC
- Dimensions: 276mm(W) 30mm(D) 39mm(H)

# MONITORS / Mirror Monitors



## STALK#1



### Universal Mirror Stalk/ NISSAN/ FORD

For use with TC-05, C-KO-MIR-5S, C-KO-75M-STALK

## STALK#7



### Mirror Stalk For New Kia/ Vauxhall Antara

For use with TC-05, C-KO-MIR-5S, C-KO-75M-STALK

## STALK#35



### Stalk For NEW Peugeot Boxer / Fiat Ducato

For use with TC-05, C-KO-MIR-5S, C-KO-75M-STALK

## STALK#3



### Stalk For VW

For use with TC-05, C-KO-MIR-5S, C-KO-75M-STALK

## STALK#12



### Stalk For Citroen/ Peugeot/ Mercedes/ Fiat

For use with TC-05, C-KO-MIR-5S, C-KO-75M-STALK

## STALK#42



### Stalk For Vauxhall Upto 2014

For use with TC-05, C-KO-MIR-5S, C-KO-75M-STALK

# MONITORS / Packages



## Camera Package For Motorhomes

Ensure the safe reversing and maneuvering of your motorhome with our specialised camera kit. Our solution includes the new 7" Mirror Monitor, equipped with dual clip-on and stalk functionality, providing optimal visibility and control. Paired with our white dual camera featuring a built-in microphone, you'll have comprehensive coverage of your surroundings, enhancing safety and peace of mind during every journey.



### Mirror Monitor

7" AHD Mirror Monitor. Dual purpose with both clip-on and stalk (AHD-7MM-01)



### Rear Camera

Dual Camera (CA-9770-PAL)



# CATEGORY 7 Sensors

## SENSORS / Proximity Sensor

### C-KO-ULTRASCAN-04B

#### 4 Sensor Side Proximity Sensor System with GPS Speed Detection



- Audible and visual traffic light display warning
- Detection range: 0 – 200cm (selectable via dip switches)
- GPS Built in off above 20Kph
- Brake input
- Sleep secure function
- Operating voltage: 9V - 32V DC

### C-KO-ULTRASCAN-06B

#### 6 Sensor Side Proximity Sensor System with GPS Speed Detection



- Audible and visual traffic light display warning
- Detection range: 0 – 200cm
- GPS Built in off above 20Kph
- Brake input
- Sleep secure function
- Operating voltage: 9V - 32V DC

### C-KO-ULTRASCAN-HEAD

#### Spare Sensor Heads

### C-KO-ULTRASCAN-MOUNT



#### Sensor Mount

- Metal Underhanging Mount for C-KO-ULTRASCAN-04B/-06B

### C-KO-ULTRASCAN-EXT-3M



#### 3M Sensor Cable Extenders

- For C-KO-ULTRASCAN-04B/-06B

# SENSORS / Parking Sensor



## RS-4-22-RM-F

### 4 Head Rubberised Parking Sensors for Metal Bumpers



- Push fit rubber heads
- Number of heads: 4
- Sensor hole size: 22Ømm
- Length of cable 3m at the furthest sensor
- Detection range: 1.5m to 0.3m
- Sensitivity adjustment
- Operating voltage: 12V DC
- Flat heads

# SENSORS / Parking Sensor



## RS-2-22-RM-A

### 2 Head Rubberised Parking Sensors for Metal Bumpers



- Push fit rubber heads
- Number of heads: 2
- Sensor hole size: 22Ømm
- Length of cable 3m at the furthest sensor
- Detection range: 1.5m to 0.3m
- Sensitivity adjustment
- Operating voltage: 12V DC
- 20° Angled heads

## RS-4000

### Parking Sensor



- Quick Installation - simple live & earth
- 5 second off delay for traffic
- Push fit gloss 22mm black heads
- Sensors on between 1mph - 6mph
- Length of cable 3m at the furthest sensor
- Detection range: 1.2m to 0.3m
- Operating voltage: 12V DC
- Variable volume
- Buzzer included
- Optional display available

## RS-4000-F-GPS

### GPS Speed Controlled Front Parking Sensor, GPS Speed Triggered



- Quick Installation - simple live & earth
- 5 second off delay for traffic
- Push fit gloss 22mm black heads
- Sensors on between 1mph - 6mph
- Length of cable 3m at the furthest sensor
- Detection range: 1.2m to 0.3m
- Operating voltage: 12V DC
- Variable volume
- Buzzer included
- Optional display available

# CATEGORY 8

## Warning Alarms

# WARNING ALARMS

## AVRWN02

### Non-Bleeping Multi-Frequency Sound



- Operating voltage: 12V / 24V DC
- Working voltage range: 9v thru 28v
- Rated current 0.50mA
- Db rating 88dB
- Overvoltage & surge protected
- Reverse polarity protected
- Fully encapsulated waterproof to IP65 minimum
- Dimensions: 100mm (L) x 65mm (H) x 46mm (D)
- AVRWN02 - Night silent through orange wire
- AVRWN02R2 - Night silent through double engage

## AVR15C

### Reverse Vocal Alarm



- "This vehicle is reversing ..."
- Operating voltage: 12V / 24V DC
- Working voltage range: 9v thru 28v
- Rated current 0.4a and below at rated voltage
- Db rating 100db @ 1 metre
- Frequency rating 1300 +/- 10%
- Modulation 70 per minute
- Overvoltage & surge protected
- Reverse polarity protected
- Fully encapsulated waterproof to IP65 minimum
- Dimensions: 75 x 70ø mm
- Night silent through orange wire

## AVR-LEFT

### Left Turn Alarm



- "This vehicle is turning left ..."
- Operating voltage: 12V / 24V DC
- Working voltage range: 9v thru 28v
- Rated current 0.4a and below at rated voltage
- Db rating 100db @ 1 metre
- Frequency rating 1300 +/- 10%
- Modulation 70 per minute
- Overvoltage & surge protected
- Reverse polarity protected
- Fully encapsulated waterproof to IP65 minimum
- Dimensions: 75 x 70ø mm
- Night silent through orange wire

# WARNING ALARMS

## AVSM14CLH

### Left Turn Alarm



- Single unit ideal for small vehicles where 1 alarm will suffice. UK Spec – LEFT TURN
- Automatically mutes when hazards are in operation to avoid confusion.
- Talking audio alert 'STAND CLEAR, THIS VEHICLE IS TURNING LEFT'
- Rated voltage: 12/24 dc
- Rated current 0.4a
- Db rating 85 db @ 1 metre
- Frequency rating 2500 +/- 10%
- Modulation 80 per minute
- Overvoltage & surge protected
- Reverse polarity protected
- Fully encapsulated waterproof to IP65 minimum
- Dimensions 122 x 81 x 55mm
- Right turn alarm alternative also available

## AVSM14CRH

### Right Turn Alarm

## AVAL2-14CLHO

### ALARM-A-LIGHT



- Talking audio alert 'STAND CLEAR, THIS VEHICLE IS TURNING LEFT'
- Orange LED talking Alarm-a-light.
- The ultimate alarm and light warning system.
- When the alarm is activated the lights flash in unison with the sound, when mute or half volume are selected the lights flash brighter to highlight the danger.
- Dual voltage
- CE and EMC approved
- M.I.R.A. Tested for all on and off highway applications Epoxy sealed for greater durability against water
- Complete with anti-vibration gasket and mounting screws
- E marked e11\*72/245\*2009/19\*7568\*00
- 10R approved 10R-037568
- Rear and right turn alarm alternatives available

# WARNING ALARMS

## AVR70R2

### 12-24V Double Engage Alarm



- Operating voltage: 12V / 24V DC
- Rated current 0.4a and below at rated voltage
- Min db rating 92db @ 1 metre
- Frequency rating 900 +/- 10%
- Overvoltage & surge protected
- Reverse polarity protected
- Fully encapsulated waterproof to IP65 minimum
- Dimensions: 67 x 101 x 45mm
- Case material abs
- Operating temperature: -40c to + 85c

## CKO-BUZ-1

### Single Tone Buzzer



- Flat top acoustic buzzer
- Voltage 10-28v Dc
- Frequency 450Hz
- Current 25 mA
- Termination by male & female spade terminals

## AVRWN01

### Non-Bleeping Multi-Frequency Sound



- Operating voltage: 12V / 24V DC
- Working voltage range: 9v thru 28v
- Rated current 0.50mA
- Db rating 88dB
- Overvoltage & surge protected
- Reverse polarity protected
- Fully encapsulated waterproof to IP65 minimum
- Dimensions: 100mm (L) x 65mm (H) x 46mm (D)
- AVRWN02 - Night silent through orange wire
- AVRWN02R2 - Night silent through double engage

# CATEGORY 9

## Heated Seats

# HEATED SEATS

### QZ-CK02/A0(A)

### High / Low Switch Split Pad Heated Seats



- 4 Pads per seat
- High / Low / Off Switch
- Pad Dimensions: 138 x 500mm
- 45°C - 70°C
- 12 Volt
- E-Marked

### QZ-CK01/A0(A)

### High / Low Switch Heated Seats



- 2 pads for one seat
- High / Low / Off Switch
- Pad Dimensions: 277 x 545mm
- 45 degrees C - 70 degrees C
- 12 Volt
- E-Marked

### QZ-CK01/A0(D)

### 3 Stage Heated Seat Pads



- 2 pad heated seat elements
- 2 pads per seat
- 3 stage variable heat settings
- Carbon fibre design
- Max temp 70°C
- 50W max power consumption
- Current drain 4.2A (max), 2.5A (med) 1.25A (low)
- Dimensions 450 x 280 x 0.3mm



# CATEGORY 10

## Accessories & Cables

# ACCESSORIES / Control Units



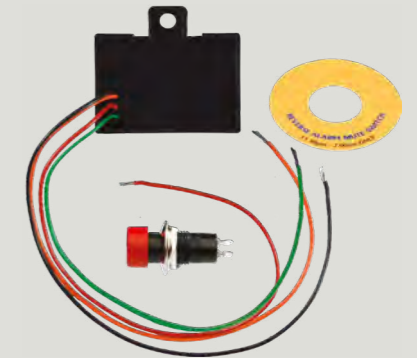
### CANM8-SCAN



#### >> CAN Bus Interface

- Speed 12V (1A max) when the vehicle speed is 0 – 15 MPH.
- Reverse 12V (1A max) when reverse gear is selected.
- Left Indicator Continuous 12V (1A max) when the left indicator is active and the vehicle speed is 0 – 15 MPH.
- Right Indicator Continuous 12V (1A max) when the right indicator is active and the vehicle speed is 0 – 15 MPH.

### AVRRS6



#### >> Timed Cut Off Switch

- Six-minute timer cut-out
- Auto reset
- Dual voltage: 12V / 24V DC
- IP67 rated - sealed against mud, water and vibration
- Dimensions: 30(H) 88(W) 47(D)
- Can be used with any alarm

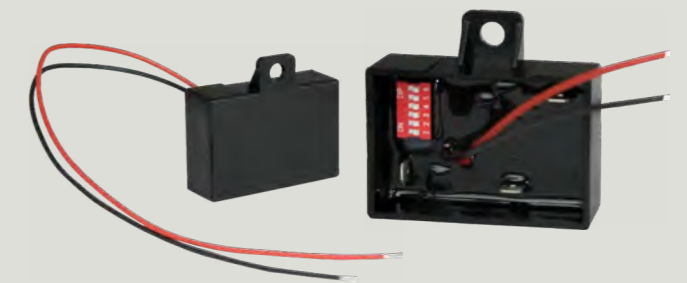
### AVSMMOD1



#### >> Indicator Module

- Indicator Control Unit
- Dual voltage: 12V / 24V DC
- Potted to withstand vibration
- Solid state electronics
- Fully waterproof
- Universal – fits all known applications
- Compact – easily fits under dashboard

### AVSPLIMO1



#### >> Speed Sensing Device

- Speed sensing device designed to turn off side scan, front sensors or side alarms above a predefined speed.
- Dual voltage: 12V / 24V DC
- Waterproof and dustproof
- Multi-setting speeds available
- Compatible with most quality manufactured products
- Compact – easily fits under



## SCAM-SPACER



### 3" Side Camera Spacer

- Allows cameras to be mounted further out. Product may need to be adapted. For use with all cameras 25mm deep.

## CKO-DM-04



### Monitor Adaptor

- Knuckle to monitor adaptor for use with C-KO-BRK-04

## C-KO-BRACKET



### Monitor Bracket

- Self-adhesive pad attached to base

## DCAM-ANGLE-15



### 15 Degree Angle Bracket For 650 Series Cams

## C-KO-DM-03



### Monitor Bracket

- Self-adhesive pad attached to base

## C-KO-BRK-04



### Monitor Bracket

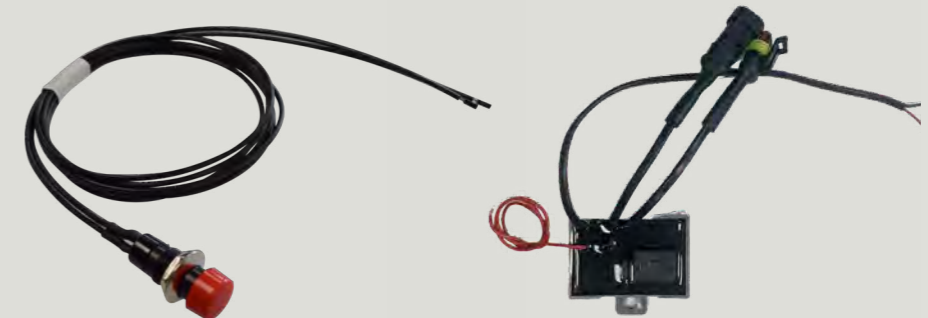
## DCAM-ANGLE-25



### Surface Mount Adaptors for Dome

- 25° Surface Mount Adaptor

## CKO-ALM-NS-AVDEL07



### Latched Instant Module with Switch

- ON OFF SWITCH UNIT
- On-off immediate cut out switch
- In cab switch provided
- Auto reset
- 12-24V
- IP67 rated – sealed against mud, water and vibration
- 30(H) x 88(W) x 47(D)
- Can be used with any alarm or side scan sensor system



## USB-CHARGE-4



### USB Charging Point

- 2 Port USB Socket
- Standard nut installation charger
- Rubber dust cover

- Output voltage: 5V
- Output rating: 3.1A total
- Operating voltage: 12V / 24V DC
- Dimensions: 60mm(W) 40mm(D) 43mm(H)

## CAB-SV-MTR-4PIN



**MULTIPLE LENGTHS AVAILABLE**

### 4 Pin Aviation Screw Cables

- Available in 1, 3, 5, 7.5, 10, 15, 20 & 25 Metre
- Male to female 4 Pin extensions

## TOT-MON/DVR



### Adaptor Cable for DVR / Monitor

Female 4 Pin aviation connection to RCA and power.

## TOT-MON/DVR-2



### Female to Female 4 Pin

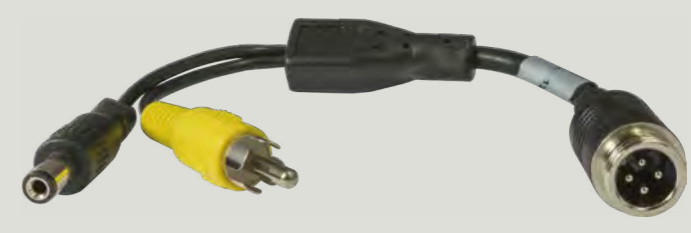
Power not terminated.

## TOT-CAM-5



### 4 Pin Aviation to Video and Audio Phono and DC Socket

## TOT-CAM-7



### 4 Pin Aviation to Video Phono and DC Plug

## TOT-CAM



### Camera Adaptor Cable

Male 4 Pin to Phono male video and Phono male audio. Unterminated bare end for live and earth

## K-69671



### Female Cigarette Socket Fused - 5amp

## TOT-BARE-MALE



### Bare End Male Aviation

## TOT-BARE-MALE-2



### Bare End Male Aviation x 2

# ACCESSORIES / Cables



# ACCESSORIES / Cables



TOT-BARE-FEMALE



Bare End Female Aviation

TOT-BARE-FEMALE-2



Bare End Female Aviation x 2

CAB-HSD-4PIN



HSD Female To 4pin Male Lead

CAB-IP-5MEXT



5M Extension Cable for IP Cameras

TOT-DC25



Bare End Power Lead

CAB-4SCR-SPLITTER



1 x Male to 2 x Female 4 Pin Splitter

CAB-VOL-CI



Volvo Truck Camera Interface Lead

MAD-PX070



PX070 RCA Y Connector 1 Female to 2 Male

GO-CONV-LEAD



4 Pin Aviation to S-Video

TOT-MON-/DVR-4



Male to Female 4 Pin Monitor/DVR Connection Lead (No Power)

C-KO-ULTRASCAN-EXT-3M



3M Sensor Cable Extenders  
For C-KO-ULTRASCAN-04B/-06B

CKP-BRK-M-PLATE



Suzi Mounting Bracket 15 PIN

# ACCESSORIES / Cables



CKO-RJ45-0.5M



RJ45 Cable 0.5M

CKO-AI-AD38-Spacer



Spacer for AI Pedestrian Detection Camera

CKO-CAL-AITool



USB Wi-Fi Calibration Tool for AI Camera

CKO-CAM-SIDE-B



Stainless Steel Bracket - Camera Side Mount

CKO-EXT-AI-3M/5M/10M/20M



3M, 5M, 10M or 20M 8pin Extension Cable for AI Cameras

- Cable has brown signal wire

# ACCESSORIES / Suzi Kit Cables



CA-SUZI-CAM-4

Tractor Socket for 4 Cameras



- 15 Pin connectors
- 4 x Female aviation leads
- 3 x Bare ended cables

CA-SUZI-MON-4

Trailer Socket for 4 Cameras



- 15 Pin connectors
- 4 x Male aviation leads
- 3 x Bare ended cables

CA-SUZI-COIL-15PIN

4 Metre 15 Core Electrical Coil



- Bracket also available

# ACCESSORIES / Suzi Kit Cables



## CAV-TRACTOR-1-V

Socket for Single Camera



- Female 4 Pin

## CAV-TRAILER-1-V

Socket for One Camera



- Male 4 Pin

## CAV20-40

Blue Coil



- Yellow 24N Connectors
- Compatible with blue label sockets
- 4 Metre 7 Core

# ACCESSORIES / Suzi Kit Cables



## CAV-TRACTOR-2-V

Socket for Two Cameras



- Female 4 Pin x 2

## CAV-TRAILER-2-V

Socket for Two Cameras



- Male 4 Pin x 2
- Custom versions can be manufactured

## CAV20-20

Straight Mount for Sockets



- Supplied with nuts & bolts

# ACCESSORIES / Suzi Kit Cables



## CAV-TRACTOR-1

Socket for Single Camera



- Female 4 Pin

## CAV-TRAILER-1

Socket for One Camera



- Male 4 Pin

## CAV20-10

Right Angle Mount for Sockets



- Supplied with nuts and bolts



# ACCESSORIES / Suzi Kit Cables



## CAV-TRACTOR-2

Socket for Two Cameras



- Female 4 Pin x 2

## CAV-TRAILER-2

Socket for Two Cameras



- Male 4 Pin x 2

## CAV20-01

Orange with Inverted 24N Connectors



- Inverted large pin to avoid incorrect connection of camera system to other equipment
- Compatible with orange label sockets
- 4 Metre 7 Core



# ACCESSORIES / Suzi Kit Cables



## CKO-7P-24S-3M

7 Pin 24S Suzi Loose Coil Cable 3M



- 24S Connectors
- 3 Metre 7 Core

## 24S-Tractor-1

24S Tractor Suzi Socket One Camera, Two Fly Leads



- 24S Socket
- Single camera connection
- 2 fly leads

## 24S-Trailer-1

24S Trailer Suzi Socket One Camera, Two Fly Leads



- 24S Socket
- Single camera connection
- 2 fly leads

# ACCESSORIES / Suzi Kit Cables



## CAB-4PIN-12/24

24 Volt to 12 Volt Dropper



- 4 Pin aviation connection

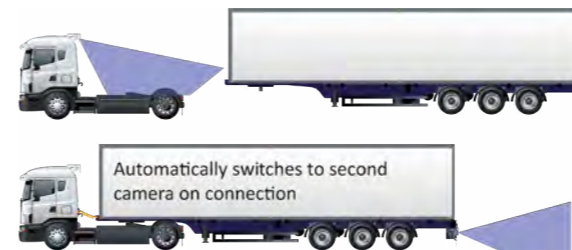
## CA-SW-I-4PIN

4 Pin Intelligent Switcher



- Automatically Detects and
- Switches when Suzi Connected
- Compatible with D1, AHD & 1080p cameras
- 2 Camera input - 1 Video output
- 4 Pin aviation connection
- 12V DC - Dimensions: 111mm x 63mm x 31mm

### CAMERA SYSTEM



- Automatically detects connection of second camera.
- Ideal for increasing artic safety with an additional camera on the rear of the tractor.
- Use with CKO suzi cables and connectors.
- Additional 4 Pin cables of various lengths available.

## STICKER-SET1



Selection of Vinyl Decals (CCTV, Angles Morts)

## PV-3S-12-24V



24Vdc - 12Vdc Converter



# CATEGORY 11

## Consumables

# CONSUMABLES



FUSEHOLDER-FU8-A



Standard Blade Fuse Holder Black  
Pack of 25

FUSEHOLDER-FU8-B-25



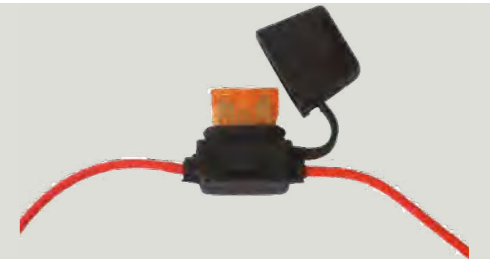
Standard Blade Fuse Holder White  
Pack of 25

CKO-FU32



Mini Blade Fuses  
Pack of 25, 7.5A / 10.0A

FH-205/210



Splash Proof Fuse  
5 Amp / 10 Amp

K-69680



Piggy Back Fuse Holder 7.5amp for Mini Blades Fuse

K-69681



Piggy Back Fuse Holder 10amp Standard Blade Fuse

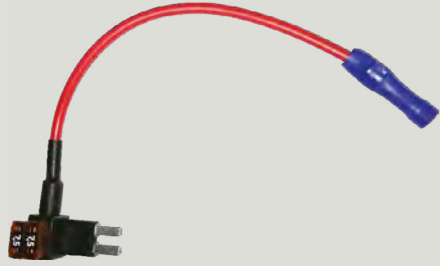
# CONSUMABLES



# CONSUMABLES



K-69682



K-69666



TL-SCTOPEN-LARGE



TIES-TR



» Fuse Tap Small Micro2  
Mini Blade Fuse Holder

» Female Cigarette Socket Unfused  
1.5M

» Split Convuluted Tubing Opener  
• Small 6.5mm - 14.5mm  
• Large 16.9mm - 23.1mm

» Nylon Cable Ties x 100  
• 370mm X 4.8mm  
• Others available

K-69671



K-69677



LOCAA319-0.5



» Female Cigarette Sockets Fused  
5amp

» Text

» Loctite AA 319 0.5ml  
Mirror Bonder

CONDUIT-SCON1/1A/2/2A



TAPE-T1-N



TAPE-T29



» Split Conduit  
• CONDUIT-SCON1 6.5mm - 10.0mm x 25M  
• CONDUIT-SCON1A 6.5mm - 10mm x 50M

• CONDUIT-SCON2A 10.1mm - 13.0mm x 50M

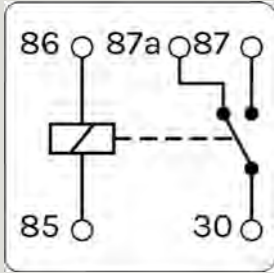
» PVC Tape Pack of 8  
19mm x 20M

» Woven Cloth Tape  
19mm x 25M

# CONSUMABLES

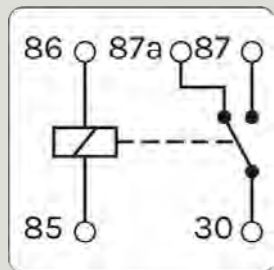


## RY7



5 Pin 12 Volt 20/30A Changeover Relay

## RY8



5 Pin 24 Volt 20/30A Changeover Relay

## SW-ROC



Rocker Switch - Standard

# CATEGORY 12 Tools



# TOOLS



## M18 BIW38-0



### M18 Impact Wrench

- 152mm in length, ideal for working within confined spaces
- Heavy duty full metal gearbox and gears for superior durability and maximum torque
- Redlink overload protection electronics in tool and battery pack
- Individual battery cell monitoring for long term pack durability
- On-board fuel gauge and LED light
- 3/8" square drive for use with universal sockets.
- Red Lithium battery pack
- Flexible battery system: works with all Milwaukee M18 batteries (sold separately)

## M18 BRAIW-0



### M18 Right Angle Impact Wrench

- 53mm head design and 307mm length, ideal for confined spaces
- Full metal gearbox and gears for durability and maximum torque
- Multi-handle design offers multiple hand positions
- Features 3/8" square drive for use with universal sockets, 2 speed settings for a wide range of applications and on-board fuel gauge and LED light
- Redlink overload protection electronics in tool and battery pack
- Individual battery cell monitoring for long term durability
- RedLithium battery pack
- Flexible battery system: works with all Milwaukee M18 batteries (sold separately)

## M18 BMT-0



### M18 Multi-Tools

- Suitable for metal, wood and plastic
- Features RedLink overload protection and cutting depth stop adaptor to prevent over-cutting
- FixTec tool-free blade change with universal blade change adaptor included
- Bright LED light illuminates workspace for accurate cutting
- Accepts Milwaukee M18 batteries

# TOOLS



## M18 RC-0



### M18 Jobsite Radio Charger with Bluetooth

- Advanced digital bluetooth allows the user to play music up to 30m away from a smartphone, computer or tablet
- Lightweight, high strength design includes a reinforced roll cage for protection from abusive jobsite conditions
- Built-in charger function allows for quick, convenient charging of any M18 battery or electronic devices via USB port
- Premium speaker and 40W amplifier produce rich, full sound.
- Powered by a Milwaukee M18 battery or 230V mains supply.

## M18 IL-0



### M18 LED Inspection Light

- Durable LED inspection light with Trueview HD lighting technology
- 3 x LED design, with a high and low light setting
- Pivoting 45° forward and backward allows for 180° coverage
- Supplied with 2 x adjustable metal hooks for hanging in vertical and horizontal positions
- Works with all Milwaukee M18 batteries

## C12 RAD-202B



### M12 Sub Compact Right Angle Drill

- High performance 4-pole motor which delivers up to 800rpm for maximum productivity
- RedLink overload protection and constant speed electronics deliver durability and performance.

# TOOLS



## M12 BPD-202C



### M12 Sub Compact Percussion Drill



- High performance sub-compact percussion drill with 4-pole motor delivering up to 30Nm torque
- RedLink overload protection and constant speed electronics deliver performance and durability
- Features all-metal gearbox, rubber-overmould grip and LED work light
- Includes 2 x M12 2.0Ah batteries and supplied in a blow-moulded case.

## M12 SI-201C



### M12 Sub Compact Soldering Iron



- Ergonomic design for maximum productivity
- Quick heat-up time (20-30 seconds)
- 3 locking head positions to work in multiple orientations (0, 45 and 90°).

## M12 HJ BL5-0

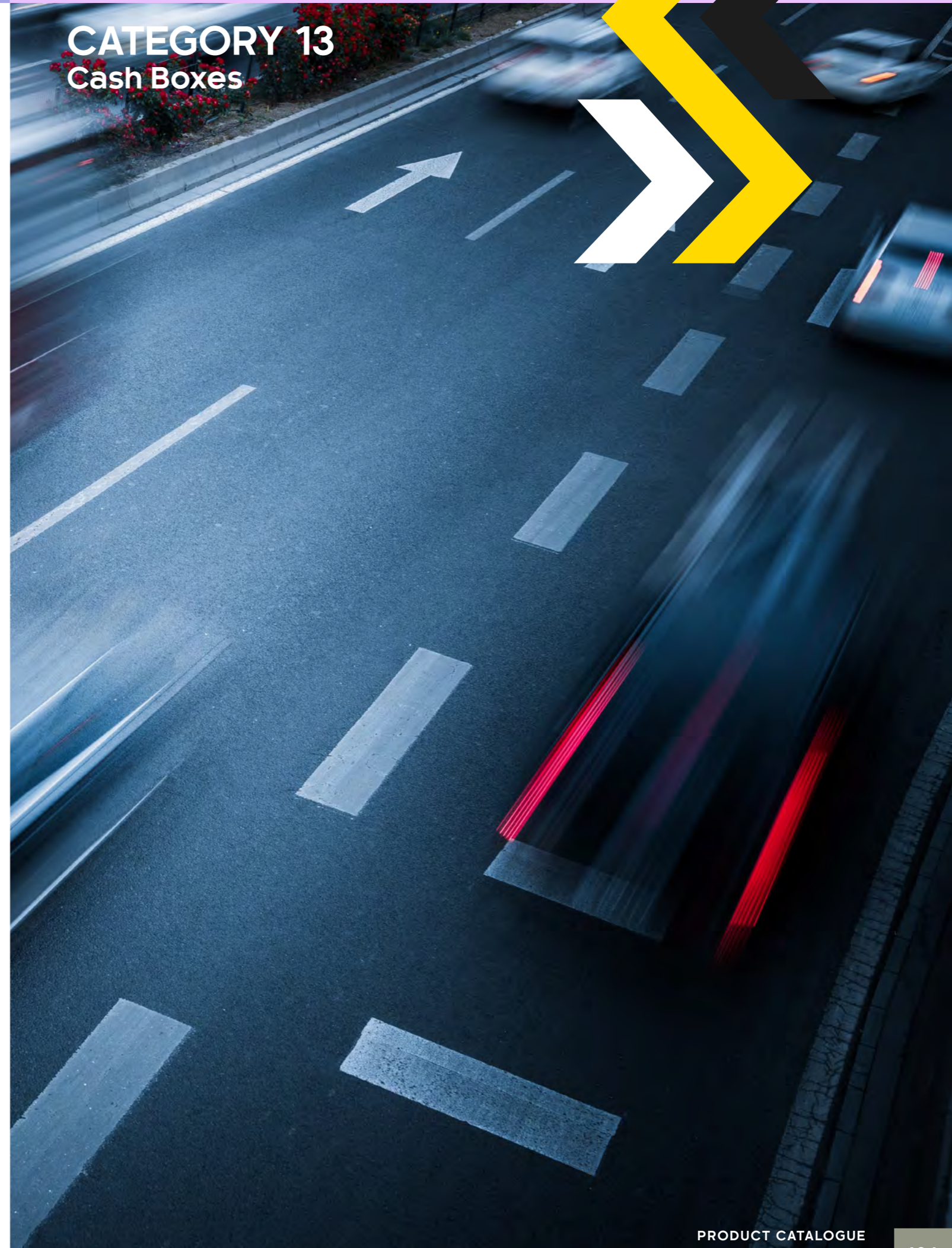


### M12 Heated Jacket - Black



- Heated jacket powered by M12 REDLITHIUM battery technology
- Advanced heat technology, with lightweight and durable carbon fibre heating elements distributing heat to core body areas
- Quick-Heat functionality, enhanced fabric construction, and optimised interior liners
- New generation TOUGHSHELL stretch polyester, re-engineered to stretch and move with the user whilst being as tough as previous TOUGHSHELL jackets
- Concealed battery pocket offers storage for mobile devices and has M12 battery controller with USB port
- Pass-thru design allows front or back pocket battery placement, providing versatility and comfort
- Water and wind-resistant for use on the jobsite

# CATEGORY 13 Cash Boxes



# CASH BOXES



## CASH BOX-F

### 4 Compartment Cash Box



- High Impact ABS with Mild Steel support
- Light weight yet very strong drivers cash box with 2 mild steel fixing points that will fit most standard hooks or can be utilised with our mounting plate
- 4 Compartments

## CASHBOX-MOUNT

### Cash Box Mounting Plate



- Heavy duty drivers Cash Box mounting plate
- Easy fix mounting

## NAMETAG-1

### Depot Name Tag Holder



- Polycarbonate Tube & PE End Plug

# CATEGORY 13 Alcolock



# ALOCLOCK



The Alcolock line of products is designed to enhance safety measures within your fleet management. Our range includes ignition interlocks, breathalysers, and single-use tests; all meticulously engineered to deliver precise and reliable results in detecting alcohol and drug substances.

By incorporating Alcolock into your protocols, you prioritise the safety of your employees, vehicles, and other road users, significantly reducing the risk of accidents. Not only does this adherence to testing procedures ensure compliance with stringent drug and alcohol policies, but it also underscores your commitment to providing a duty of care to your workforce. With Alcolock, safeguarding your operations becomes more than a priority—it becomes a proactive measure towards a safer, more responsible workplace.



## CKO-ALCO-ALERT

### Alert J5 with Printer



- Ensure the safety of your fleet
- Electrochemical sensor technology ensures accurate results within less than 10 seconds
- Disposable mouthpieces allow the device to be safely used by multiple operators
- Passive samples can also be taken without user participation
- Can be paired with a Bluetooth printer to print results on the spot
- Dimensions: 130mm x 59mm x 32mm



## CKO-ALCO-V3-S

### Alcolock V3 Ignition Interlock



- Secure and reliable detection of alcohol usage
- Prevents engine ignition if the operator's breath alcohol concentration (BrAC) is over a pre-set limit
- Disposable mouthpieces
- Can be programmed to meet safety policy requirements
- Sensors help ensure mechanical devices (such as air pumps) cannot be used to circumvent the system
- Engineered to withstand the vibration, dirt, dust, humidity, and extreme temperatures
- Information is all logged securely using AES 128-bit encryption standard
- Includes an electronic override for emergency situations
- Dimensions: 150mm x 48mm x 50mm

# ALOCLOCK



## HFS-ALCO-DS-EX

### Drivesafe Exec Breath Alcohol Tester



- Provides accurate results within seconds
- Uses the latest electrochemical sensor technology
- Disposable mouthpieces
- Test measurements are shown on a 3-digit LCD screen (along with a graphical intensity meter and a tricolour backlight)
- Results of the analysis appear within a few seconds
- Icons on the LCD screen guide the operator confidently through the test
- Advanced alcohol-specific electrochemical sensors offer long-term stability, for accurate results over years of use
- Dimensions: 137mm x 59mm x 26mm



## CKO-ALCO-SINGLE

### Drivesafe Express Single Use Tester



- Single use breath alcohol tester
- Discrete, convenient, and non-invasive
- Quickly measure an employee's readiness to work
- Reliable results with easy-to-read colour changing crystals
- The more intense the colour, the higher the alcohol concentration
- The four-level indicator accurately identifies your BrAC within 2 to 4 minutes



## CKO-ALCO-DRUG

### Oraltox Saliva Drug Tester



- Detects a multitude of drug types
- Discrete, convenient, and non-invasive single use collection swab
- Quickly measure an employee's readiness to work
- A negative result will appear within 2 minutes (10 minutes for an inconclusive result)
- A hygienic, low cost, disposable option



Handsfree Group

# Nationwide, Professional Vehicle Installations



FCS1362 FITAS Accredited  
Engineers On Your Doorstep

CKO have proudly partnered with Handsfree Group to provide nationwide installation services to our customers. With an extensive network of mobile engineers, the vehicle safety equipment that you purchase can be installed into your vehicles at a location that is convenient to you - any time, day or night.

All engineers are FCS1362 and FITAS accredited and have received the City & Guilds Level 2 Award in the Safe Maintenance of Electric and Hybrid Vehicles. This comprehensive skill set guarantees the utmost quality in our services, offering you unparalleled peace of mind.

Contact the CKO sales team to find out more.

Call 020 8863 8333 (Option 1)



## MEET THE TEAM



### The Vehicle Safety Experts

At CKO, our passion lies in helping our customers to discover the perfect product or package to fulfill their vehicle safety needs. With a dedicated team working diligently behind the scenes, we strive to exceed our customers' expectations by delivering tailored solutions that prioritise safety and satisfaction.

#### » Sales

With years of industry experience and a wealth of knowledge, our sales team members are experts in vehicle safety and compliance. They are ready to help you navigate regulations, recommend the best solutions, and ensure that you achieve your safety and compliance goals with confidence.



#### » Technical

Serving as the backbone of our operations, our technical team stand ready to support both our sales team and our valued customers alike. With a deep understanding of our products and services, they possess the capability to address any technical inquiries our customers may have, ensuring an exceptional experience.

#### » Accounts

Comprised of diligent professionals with a wealth of financial expertise, our accounts team are committed to providing exemplary service to our valued clients. From managing billing inquiries to resolving payment issues, our accounts team works tirelessly to guarantee customer satisfaction and foster long-term relationships.





THE VEHICLE SAFETY EXPERTS

**CKO Vehicle Safety Experts**

6 Lumsdale Road, Cobra Court,  
Trafford Park, Manchester,  
M32 0UT

+44 (0) 20 8863 8333

[www.c-ko.co.uk](http://www.c-ko.co.uk) [sales@c-ko.co.uk](mailto:sales@c-ko.co.uk)

